

Safe Communities America
National Safety Council
Application for Reaccreditation

Sullivan County, Tennessee
January 2017

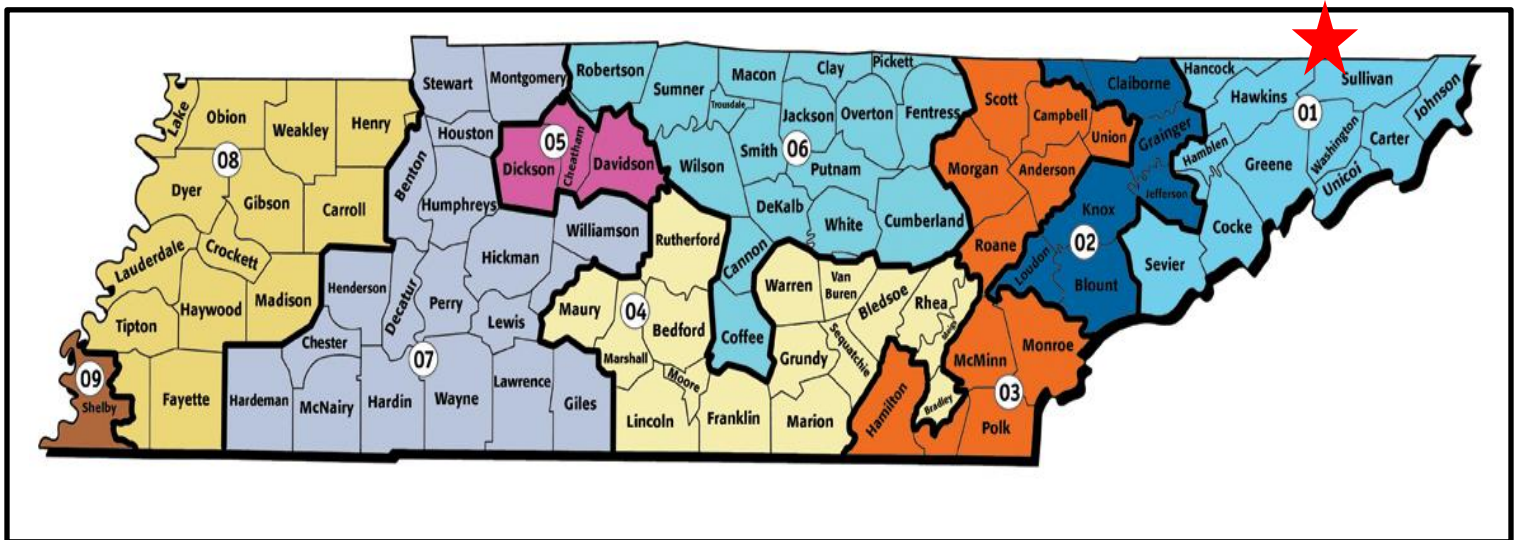


Table of Contents

1. Contact Information	3
2. Community Description	4-5
3. Criteria to be a Safety Community	
I. Sustained collaboration	6-8
II. Data Collection and Application	9-37
III. Effective strategies to address injuries	38-42
IV. Evaluation methods	43
4. Community Inventory of Safety and Injury Activities	44-46
5. Appendices	47-68
I. Appendix A	
II. Appendix B	
III. Appendix C	
IV. Appendix D	
V. Supporting Documents	

Section 1:

Contact Information



Randy Cassell

randallmcassell@gmail.com

423-963-8292

Kingsport Area Safety Council

President

Ray Heim RN, CEN, TCRN

Trauma Program Manager

Thomas.Heim@wellmont.org

423-224-5894

Carol Jones APN NREMT-P

Injury Prevention Coordinator

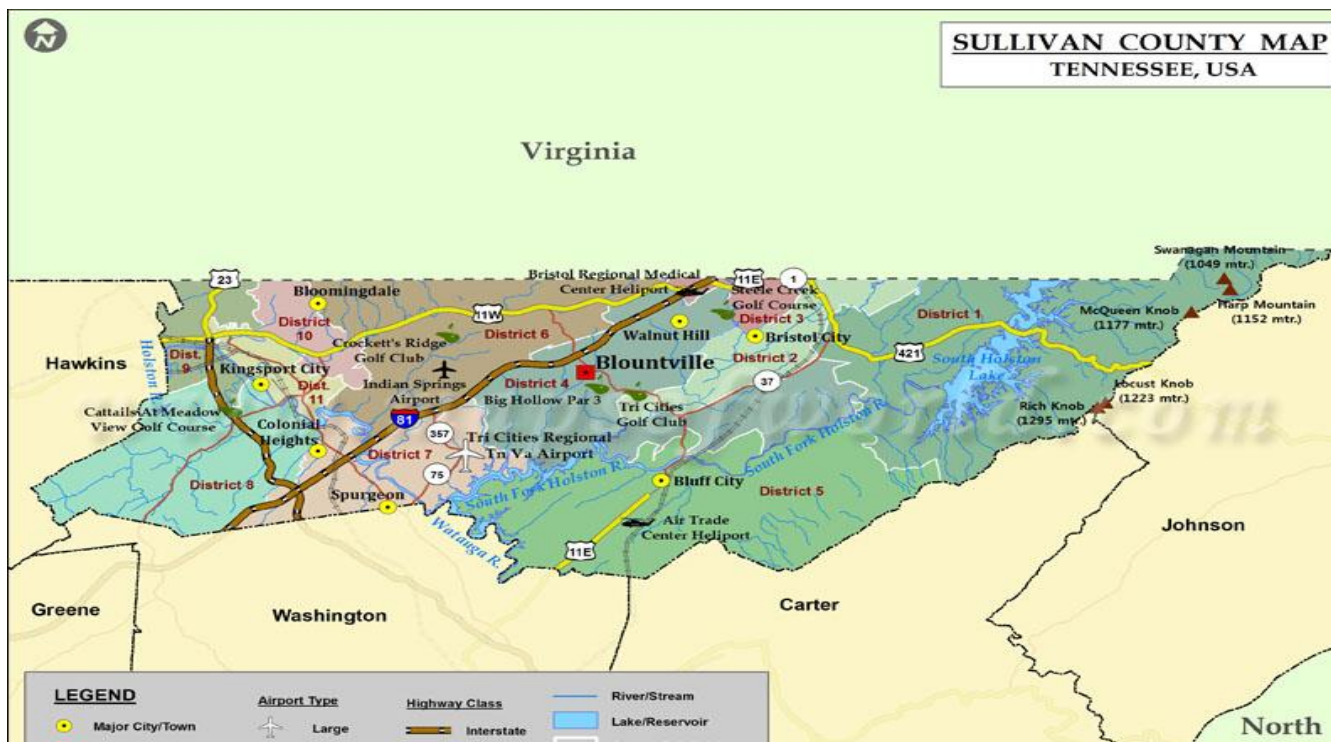
Carol.jones@wellmont.org

423-224-3020

Acute Care Surgery

Surgical Critical Care, Trauma and General Surgery

Holston Valley Medical Center- Level 1 Trauma Center



Section 2: Community Description

History and Uniqueness

Sullivan County was created in 1779 originally from a portion of Washington County and named for John Sullivan in the Revolutionary War. Long Island of the Holston in Kingsport had been an important landmark for the Cherokee. The island was the site of Fort Robinson, constructed in 1761 following the fall of Fort Loudoun further to the south, making the Sullivan area one of the earliest settled areas of Tennessee. Sullivan County is the second oldest county in Tennessee preceded by Washington County the oldest founded in 1777.



The county is comprised of 10 cities or communities. These include Bloomingdale, Blountville, Bluff City, Bristol, Colonial Heights, Kingsport, Piney Flats, Spurgeon, Sullivan Gardens and Walnut Hill. Kingsport and Bristol are the two largest cities. Bristol is unique in that it is a city within two states. Bristol is the home of the Bristol Motor Speedway, which has the capacity of seating 160,000 fans for racing events and has now extended into other entertainment avenues such as college football and concerts. The 2016 Pilot Flying J Battle at Bristol was an American college football game played at Bristol Motor Speedway in Bristol, Tennessee on Saturday, September 10, 2016 between the University of Tennessee Volunteers and the Virginia Tech Hokies. It set a new record for the highest attendance at a college football game, officially 156,990 people. Bristol has a strong historical background and was recognized in 1998 by the U.S. Congress as the official “Birthplace of Country Music”.

Kingsport is the 12th of the 32 largest incorporated cities and towns in Tennessee and is represented in Sullivan, Hawkins and Washington Counties. Kingsport, the Model City, will be celebrating its centennial year in 2017. Kingsport is home to the Bays Mountain Planetarium, a 3500 acre nature preserve park which is the largest city owned park in Tennessee. Founded in 1920 and headquartered in Kingsport, Tennessee, Eastman is a FORTUNE 500 company manufacturing chemicals, fibers and plastics materials.



Why is your community seeking a safe community's accreditation?

Nationwide, injuries, both intentional and unintentional, are the third leading cause of death in the United States. Injuries are the leading cause of death in ages 1-44. Fatal injuries rates are increasing across the US as well as an increase in violent behavior and drug abuse related injuries. Sullivan County continues to see growth in population for ages 51 and up, which is our highest volume of residents that sustain injuries from a fall. With this growing trend, our regions community and partners value the importance of safety and prevention and seek to maintain the safe community accreditation.



Who in your community is taking the lead in organizing this effort?



Kingsport Area Safety Council (KASC) is taking the lead in the safe community's initiative. KASC was established in 1944 by several local businesses in an effort to promote a safer community. Networking with other safety professionals as well as improving the community's perception of safety were primary targets. In 2015, KASC celebrated the 70th anniversary of the establishment of the Council. Also celebrated was the 30th Annual Safety Seminar.

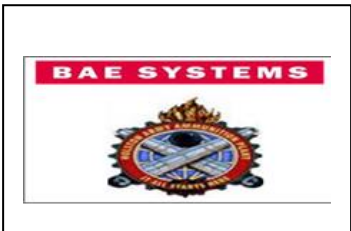
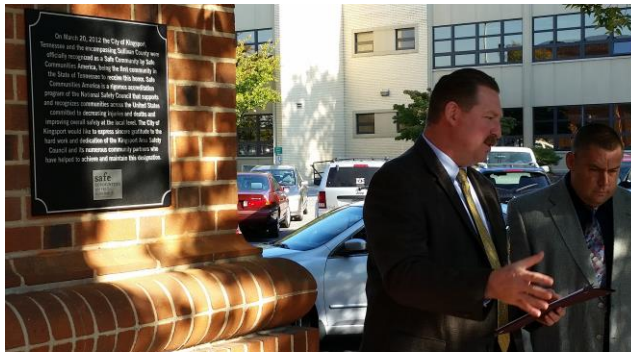
The council is currently managed by a Board of Directors that meets on a monthly basis. The safety council also coordinates a monthly Community Safety Awareness . A priority for the council is to progress in prevention of accidents which is best effected by organized and cooperative action on a voluntary basis. Membership is open to individuals as well as businesses. A Safety Seminar is one of many annual events sponsored by the Safety Council. The first KASC Seminar was developed under the leadership of President Bill Hammond of Eastman. Named the "Construction Safety Seminar", it was designed to provide training for local industries and businesses. Bill recruited the services of the area TOSHA representatives as well as other local

companies to implement what would become an annual event. To emphasize the expanded nature of the classes being offered, the name was changed to "Safety Seminar" in 1991 as it was no longer just for the construction industry. In the early days of the Seminar, the attendees were from the local area. Today, we have attendees from throughout East Tennessee, including the Knoxville area.

Section 3: Criteria to be a Safe Community

Sustained Collaboration

The Kingsport Areas Safety Council is the coalition leading the Sullivan County Safe Community progress. The group seeking the safe communities designation originally met in 1944 and consisted of members from several businesses. Today members includes multiple business and a Board of Directors. (Appendices A and B). On October 4, 2016, Kingsport Board of Mayor and Aldermen presented a special proclamation in recognition of Safe Communities America Day. And on the following day, October 5, 2016, Kingsport Police Department Public Information Officer Tom Patton revealed a plaque at the Kingsport Justice Center commemorating this significant achievement. Support letters and Meeting notes are attached in (Appendices C and D).





The mission of the Council is to enhance the quality of life in our community through the effective promotion of safety and health; on the highway, in the workplace, in the home and school.

The Council's focus on promoting all types of safety is accomplished through an organized application of available resources. We serve the citizens and businesses through education, active involvement and support for safety and health initiatives. Through cooperative efforts, we make our community a safer place to live, learn, work and play.





Communication strategies include a website <http://kptasc.org/>, Facebook <https://www.facebook.com/Kingsport-Area-Safety-Council>, email blasts and newspaper releases.

Mission remains the same for Kingsport Area Safety Council

June 22nd, 2015 8:30 pm by COLLIN BROOKS

KASC partners with Habitat for Humanity to provide smoke detectors for the homes Habitat builds around the Kingsport area. All photos courtesy of the Kingsport Area Safety Council.

This year marks the 70th year that members of the [Kingsport Area Safety Council](#) have been going above and beyond to make sure that the city they enjoy is able to be enjoyed safely.

That was the idea the group was founded on in 1944 when several local businesses got together in order to promote a safer community. The mission of the council is to enhance the quality of life in its community through the effective promotion of safety and health: on the highway, in the workplace, in the home and at school.

However, much to the chagrin of the group, the council seems to fly under the radar of most people in the community.

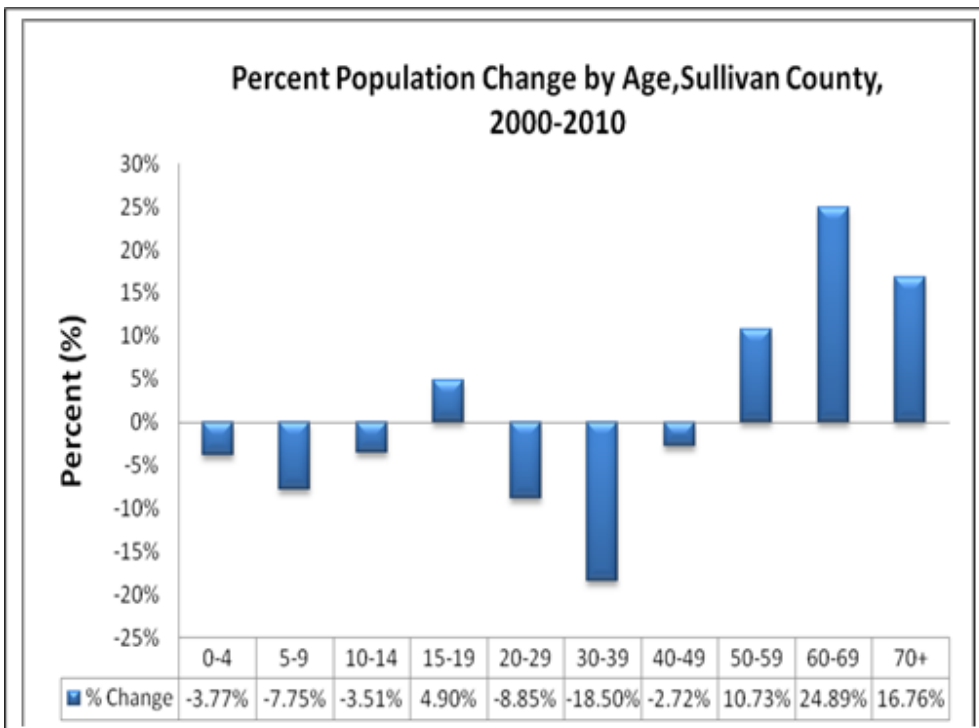
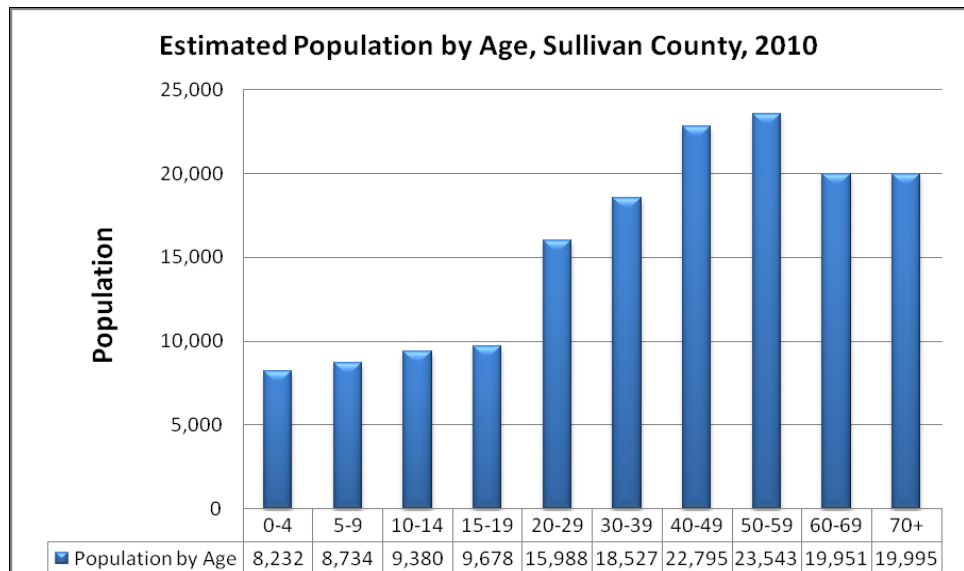
Read more: [Mission remains the same for Kingsport Area Safety Council | Kingsport Times-News](http://e-edition.timesnews.net/article/9088768/after-70-years-mission-remains-the-same-for-kingsport-area-safety-council#ixzz4ULT0vBPh) <http://e-edition.timesnews.net/article/9088768/after-70-years-mission-remains-the-same-for-kingsport-area-safety-council#ixzz4ULT0vBPh>



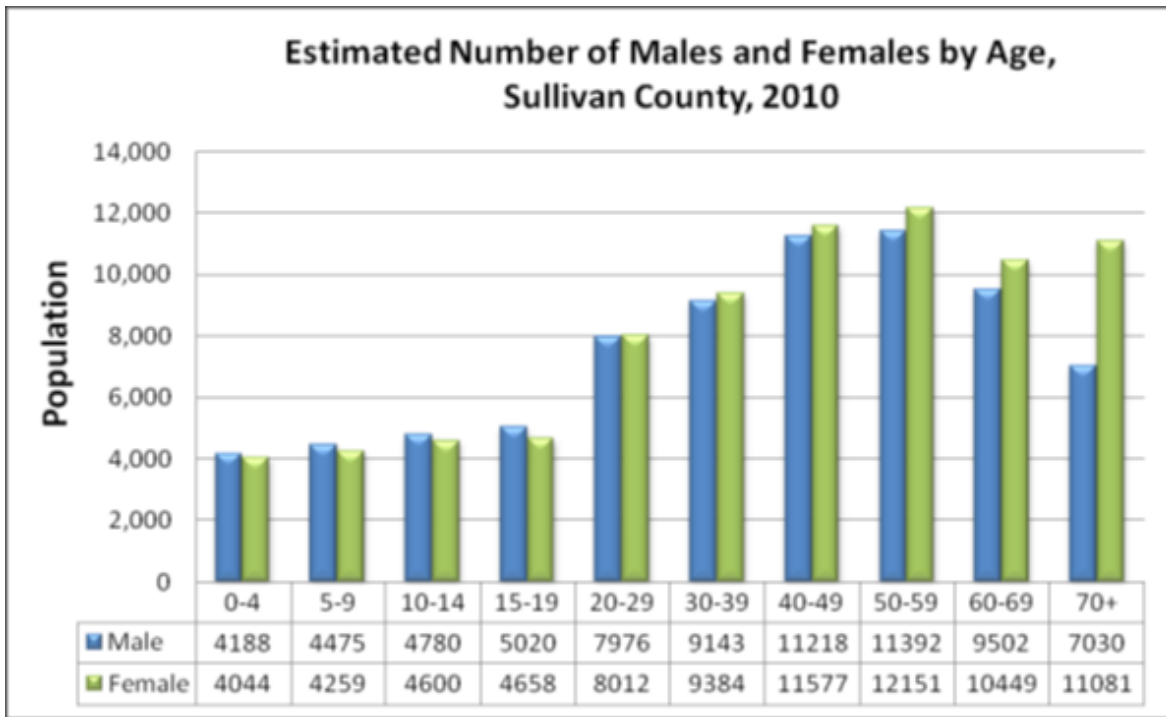
Data Collection and Application

Population and Population Growth, Age distribution and trends.

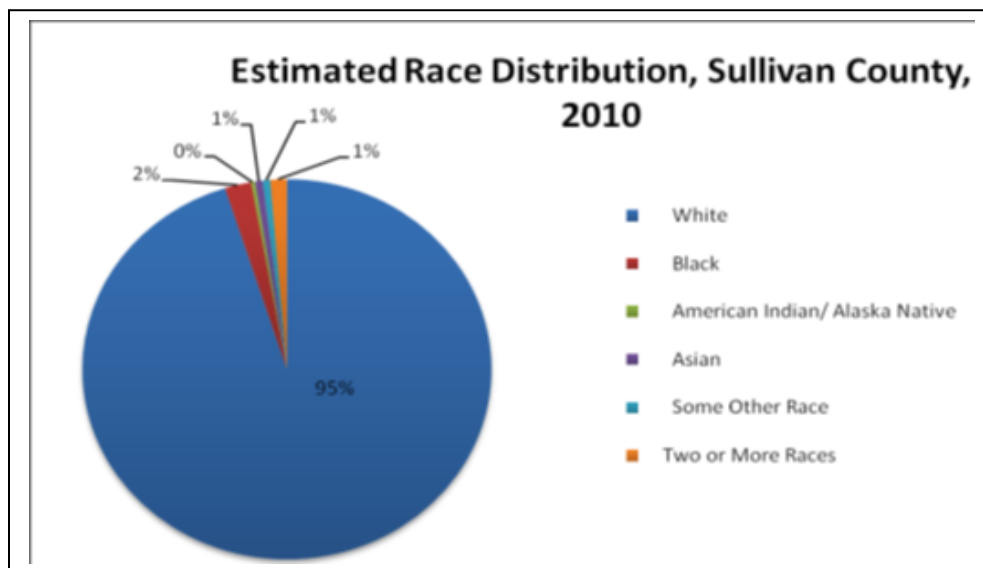
An estimated 156,786 individuals reside in Sullivan County. In 2012, the total population for the state of Tennessee was estimated to be around 6.4 million. Estimates suggest the population will rise to approximately 6.8 million by 2020. The largest proportion of the population in Sullivan County is between the ages of 50-59 with 23,543 individuals. Closely behind are the 40-49 year olds with 22,795 individuals. The largest decrease occurred in the 30-39 age group, which declined by 18.50% since 2000. Since 2000, estimates indicate the population of 60-69 year olds has increased 24.89%. With falls being the #1 Mechanism of Injury nationwide, and the recognition of geriatrics as a specialty population in the trauma care, the challenge to incorporate safety into this growing population continues.



The largest population in Sullivan County is 40-59 years of age. However, the largest negative percent change in population is in the 30-39 range, and the highest positive percent change is within the 60-69 years of age range.

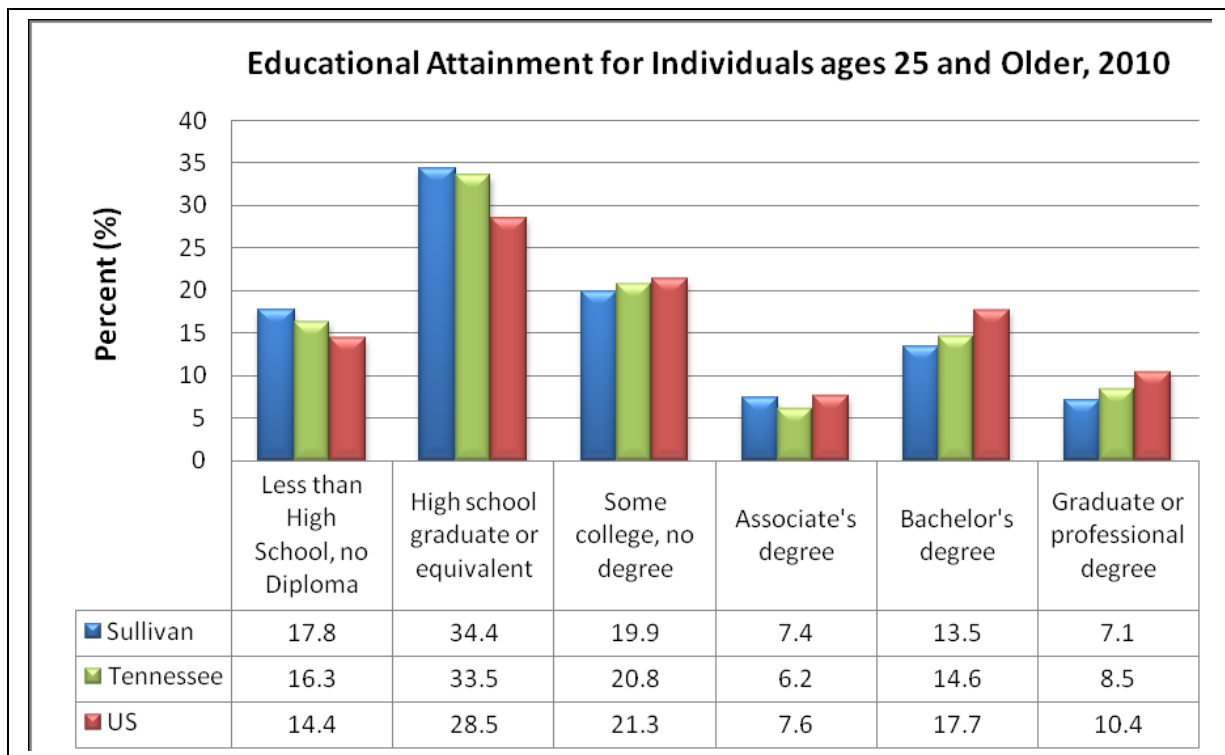


The female population is greater than the male population in ages 30 and up. The male population will start to increase in younger generation of ages 0-19 years.

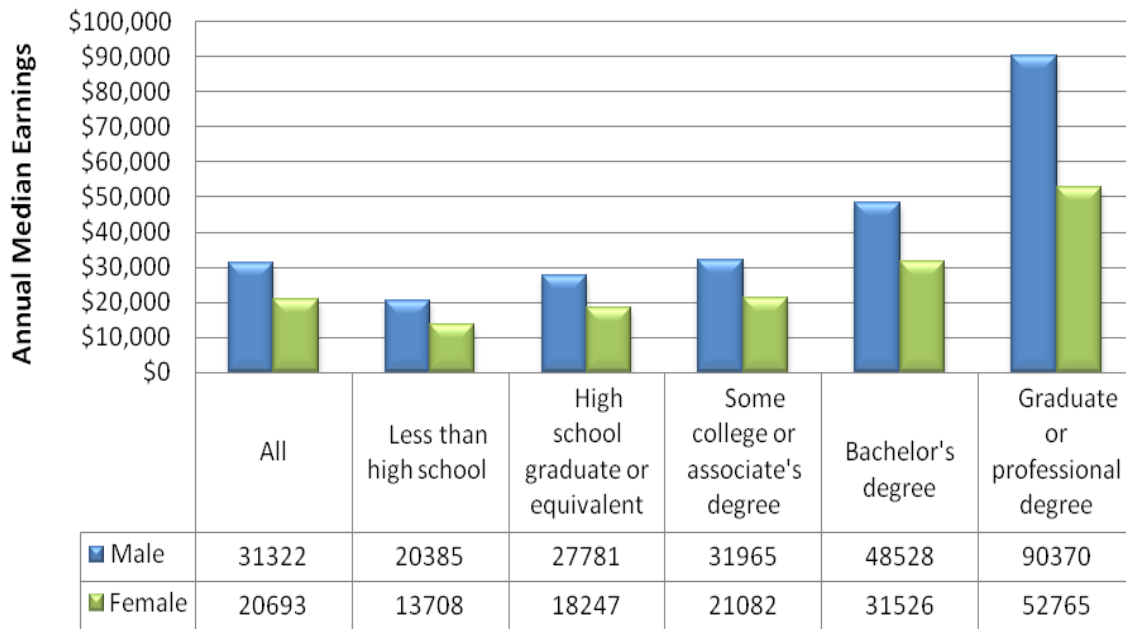


Education in Sullivan County consists of Kingsport City, Bristol City and Sullivan County Schools. Dobbyn's Bennett High School, located in Kingsport, is ranked as #17 as best high schools in TN with a 94% graduation rating. The following is the breakdown of school agencies. In Sullivan County, 82% of residents have at least a high school education which is slightly lower than that of TN at 83.7%. Residents which held a bachelor's degree is 13% and 7% attained a graduate or professional degree.

Entity	Elementary	Middle	High School	College
Kingsport	7	2	1	
Bristol City	5	1	1	
Sullivan County	15	6	4	5



Annual Median Income for Males and Females by Educational Attainment, Sullivan County, 2010



Overall, females tend to receive a lower income of at least \$5,000 less than males regardless of educational background. Males nearly double their annual income with a professional degree, while females increase 20%.

Business Description and Trends

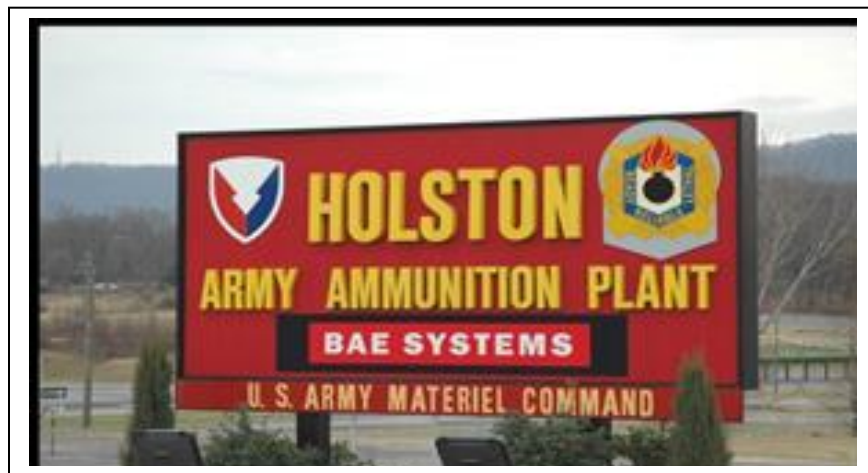
In 2010 there were 13,042 business establishments in Sullivan County. Of these, the majority (57.78%) employed 1-4 individuals and 1.6% employed more than 100 individuals. The most common type of business in Sullivan County was Health Care and Social Assistance which accounted for 22% of business establishments. Manufacturing accounted for 20%.

Eastman celebrated its fourth consecutive Environmental Protection Agency Energy Star Award. The company was named the EPA's Partner of the Year – Sustained Excellence. Eastman once again received a Glassdoor Employees' *Choice Award* as one of the "Best Places to Work in 2016" in December. Tennessee's largest industrial manufacturer was also recognized as a Top 50 employer by Workforce Diversity for Engineering and IT Professionals. Holston Army Ammunition Plant, HSAAP, is housed on 5980.11 acres with 495 buildings, 129 igloos with explosive storage capacity of 201,369 square feet. Holston has a government staff of 21 Department of the Army civilians.

Spanning more than 6,000 acres in Kingsport, Tenn., the Holston Army Ammunition Plant is the major supplier of explosive materials (primarily RDX- and HMX-based products) to the U.S. Department of Defense. The facility has state-of-the-art equipment and capabilities for nitration chemistry, acid handling and recovery, and other chemical-processing operations.

Holston recently earned industry and national acclaim for producing IMX 101, the first in a family of “insensitive munitions.” In insensitive munitions are far more stable than conventional TNT and Composition B, making the weapons systems they support safer for troops to transport and handle.

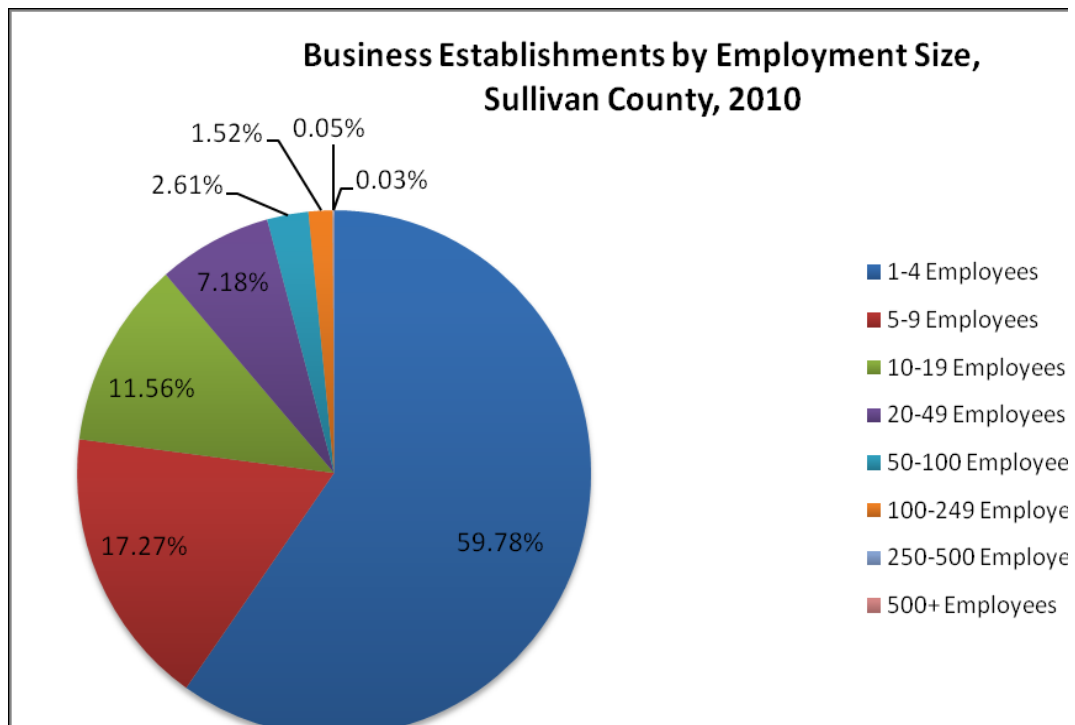
Sullivan County is fortunate to have 3 hospitals within our area. Holston Valley Medical Center is a 450 bed facility Level 1 Trauma Center, Bristol Regional a Level II Trauma Center and Indian Path Medical Center is a 261 bed acute care hospital.

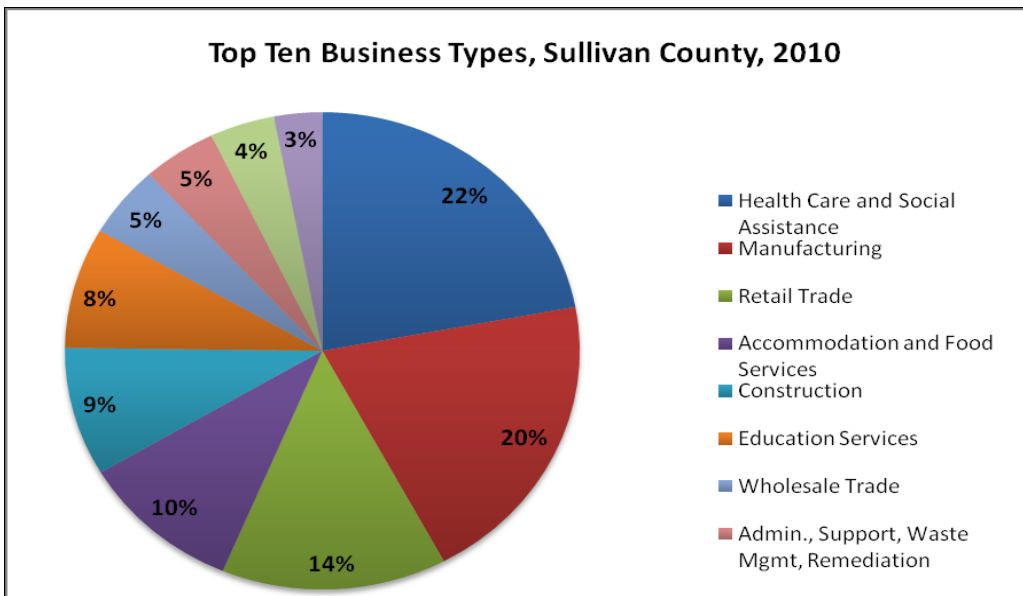


Industries in Sullivan County

1.	Eastman	6,800 Employees
2.	BAE Systems	525 Employees
3.	Domtar Paper	330 Employees
4.	Robinette Company	325 Employees
5.	Bristol Metals	310 Employees
6.	Home Shopping Network	305 Employees
7.	Bell Helicopter	300 Employees
8.	Modern Forge of Tennessee	220 Employees
9.	Aeronautical Accessories, Inc.	200 Employees

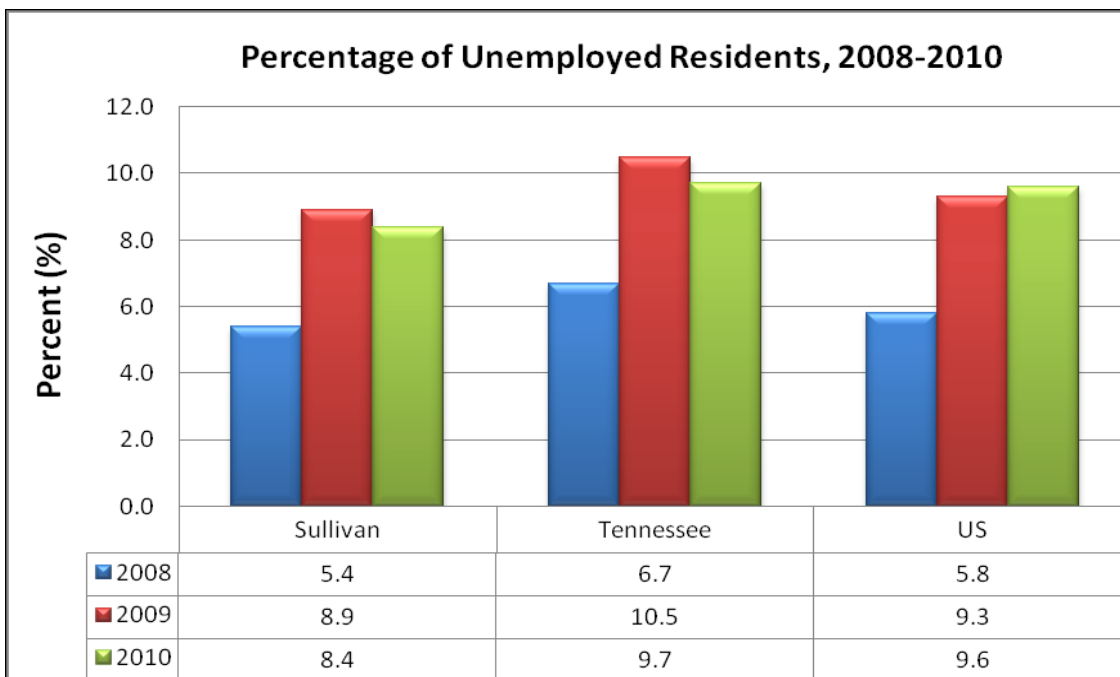
Source: Tennessee Department of Labor and Workforce Development, Employment Security Division, Research and Statistics

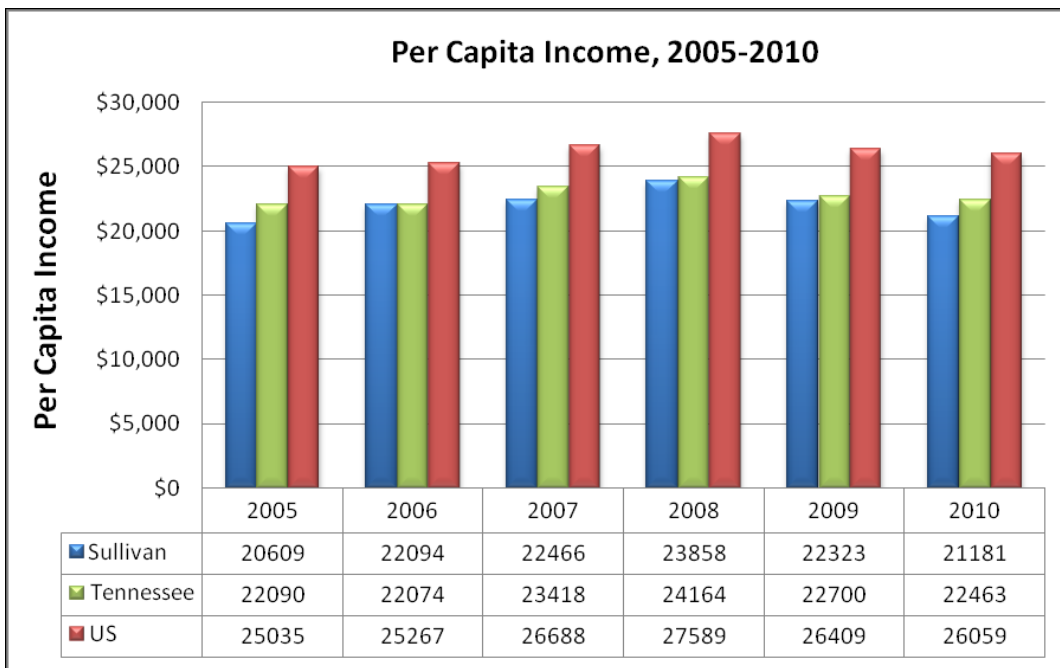




In 2010, the top two business types in Sullivan County were Health Care and Social Assistance (22%) and Manufacturing (20%).

The median annual per capita income has steadily decreased since 2007-2008, which coincides with trends in per capita income depicted for Tennessee and the U.S. On average, a male with a graduate or professional degree had an annual median income of over \$37,000 more than a female with the same education. In 2010, approximately 18.4% of all people in Sullivan County were living below the poverty level (compared to 15.8% in 2005). Of these, about 30% were children under the age of 18, compared to 23.6% in 2005. About 15.7% of males and 20.8% of females were living below the poverty level in 2010

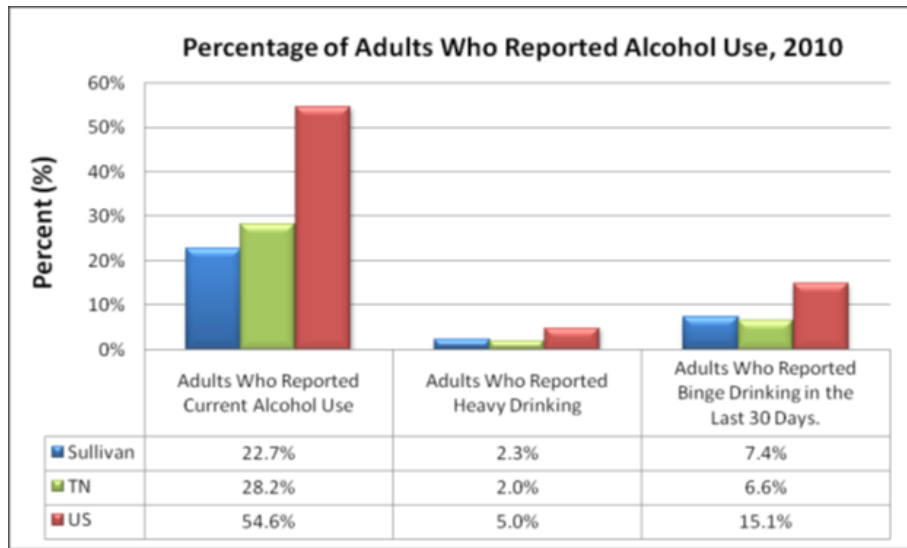




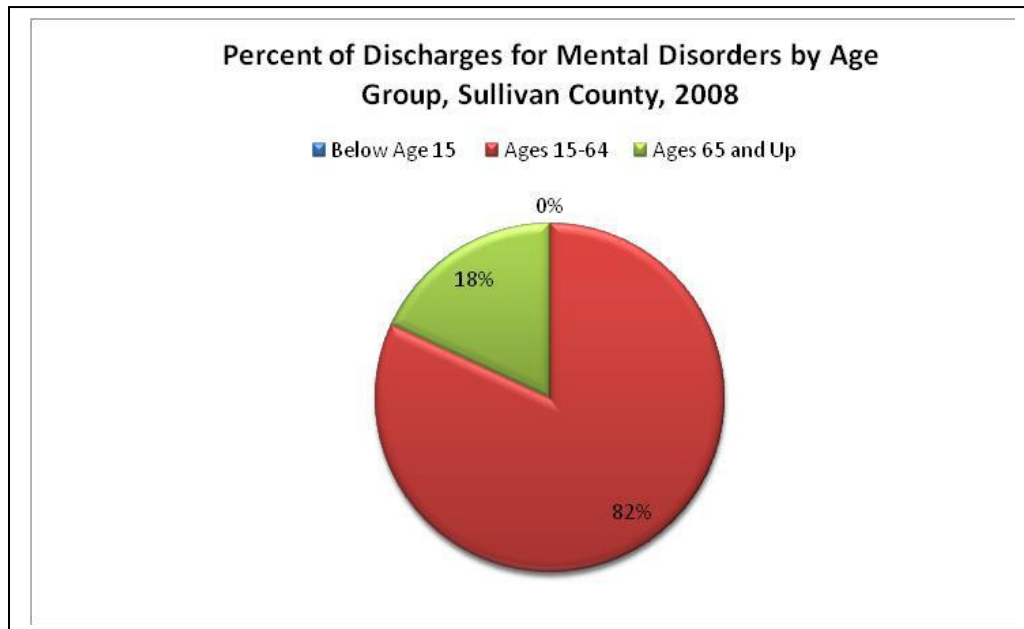
Social and Behavioral

Sullivan County offers residents 17 greenways and trails, 5 golf courses, and approximately 30 Parks including sports complexes, soccer parks, skate parks, dog parks, and other facilities. Sullivan County also boasts 4 community centers that offer indoor games such as billiards, ping Pong, and foosball. They also offer several outdoor games such as basketball, tennis, playgrounds, and picnic/shelter areas. There are also several youth and adult athletic leagues in both Kingsport and Bristol. The Arby's Classic is an annual basketball tournament hosted at Viking Hall in Bristol. Approximately 30,000 spectators attend the Arby's Classic during the 5 day tournament with 15% from out-of-area guest spectators, 25 media members attending per day and approximately 200 volunteers to help run the Arby's Classic. In addition to the many faith options in the community, Sullivan County has other facilities to promote community recreation with 8 public library facilities and 3 senior centers dispersed throughout the county.

Binge drinking is defined as having five or more alcoholic drinks in a row within a couple of hours. Approximately, 7.4% of adults in Sullivan County reported engaging in binge drinking in the last 30 days in 2010 compared to 6.6% for the state. Heavy drinking is defined as consuming, on average, greater than two drinks per day for men and one drink per day for women. Compared to Tennessee, a slightly higher percentage of Sullivan County adults reported drinking heavily. A lower percentage of Sullivan County adults reported current alcohol use compared to Tennessee and the U.S. (Figure 4.2)



According to the Centers for Disease Control, 1 in 10 Adults in the United States report that they are depressed. Depression affects everyone; however, women, people with less than a high school education, those previously married, people between the ages of 45-65, racial minorities, those unemployed, and people without insurance are more likely to be depressed. In the 2008 Department of Health and Human Services Community Health Status Report, 12,045 individuals (7.83% of Sullivan County's population) reported having had major depression, compared to 10% of the US population.



In 2010, domestic violence offenses in Tennessee made up 52.1% of all person crimes, resulting in 84,517 domestic violence reports according to the Tennessee Bureau of Investigations. Of these reports 47,279 (55.9%) were cleared. The majority of these offenses were simple assault, aggravated assault, and intimidation (96.1%).

Kingsport PD					
Type of Incident	2012	2013	2014	2015	2016
Domestic Violence	1269	1021	934	900	1000
Assault with Weapons	312	248	297	304	297
Assaults	1269	931	917	941	854
Deaths from Violence	4	1	2	6	1
Sullivan County PD					
Type of Incident	2012	2013	2014	2015	2016
Incidents Involving Death	89	77	79	105	86
Assaults	1295	1251	1069	1118	1260
Deaths from Violence	1	1	1	1	0

Injury

Accidents are the third leading cause of death in Sullivan County and the fourth leading cause in the U.S. Accidents are the fifth leading cause of death in Tennessee. Since 1995, the age-adjusted accident mortality rate among individuals in Sullivan County and Tennessee has been similar. Males in Sullivan County are more likely to die from an accident than females (Figure 8.32). Mortality due to accidents in 2009 was more than double for men (65.66 per 100,000) than for women (27.54 per 100,000)

National Estimates of the 10 Leading Causes of Nonfatal Injuries Treated in Hospital Emergency Departments, United States - 2013

Rank	Age Groups										Total
	<1	1-4	5-9	10-14	15-24	25-34	35-44	45-54	55-64	65+	
1	Unintentional Fall 134,229	Unintentional Fall 852,884	Unintentional Fall 624,890	Unintentional Struck By/Against 561,690	Unintentional Struck By/Against 905,659	Unintentional Fall 742,177	Unintentional Fall 704,264	Unintentional Fall 913,871	Unintentional Fall 930,521	Unintentional Fall 2,495,397	Unintentional Fall 8,771,656
2	Unintentional Struck By/Against 28,786	Unintentional Struck By/Against 336,917	Unintentional Struck By/Against 403,522	Unintentional Fall 558,177	Unintentional Fall 814,829	Unintentional Overexertion 638,745	Unintentional Overexertion 530,422	Unintentional Overexertion 461,114	Unintentional Overexertion 266,126	Unintentional Struck By/Against 281,279	Unintentional Struck By/Against 4,214,125
3	Unintentional Other Bite/Sting 12,186	Unintentional Other Bite/Sting 158,587	Unintentional Struck Cut/Pierce 112,633	Unintentional Overexertion 294,669	Unintentional Overexertion 672,946	Unintentional Struck By/Against 599,340	Unintentional Struck By/Against 444,089	Unintentional Struck By/Against 390,931	Unintentional Struck By/Against 261,840	Unintentional Overexertion 212,293	Unintentional Overexertion 3,256,567
4	Unintentional Foreign Body 10,650	Unintentional Foreign Body 139,597	Unintentional Other Bite/Sting 107,975	Unintentional Cut/Pierce 114,285	Unintentional MV-Occupant 627,565	Unintentional MV-Occupant 526,303	Unintentional MV-Occupant 374,231	Unintentional Other Specified 385,221	Unintentional MV-Occupant 227,620	Unintentional MV-Occupant 197,646	Unintentional MV-Occupant 2,462,684
5	Unintentional Other Specified 10,511	Unintentional Cut/Pierce 83,575	Unintentional Overexertion 93,612	Unintentional Pedal Cyclist 84,732	Unintentional Cut/Pierce 431,691	Unintentional Cut/Pierce 402,197	Unintentional Other Specified 300,154	Unintentional MV-Occupant 343,470	Unintentional Other Specified 212,168	Unintentional Cut/Pierce 156,693	Unintentional Cut/Pierce 2,077,775
6	Unintentional Fire/Burn 9,816	Unintentional Overexertion 81,588	Unintentional Pedal Cyclist 74,831	Unintentional Unknown/Unspecified 84,668	Other Assault* Struck By/Against 381,522	Other Assault* Struck By/Against 342,514	Unintentional Cut/Pierce 297,769	Unintentional Cut/Pierce 282,353	Unintentional Cut/Pierce 189,440	Unintentional Poisoning 100,988	Unintentional Other Specified 1,767,630
7	Unintentional** Inhalation/Suffocation 8,294	Unintentional Other Specified 65,120	Unintentional Foreign Body 63,450	Unintentional MV-Occupant 73,692	Unintentional Other Specified 321,914	Unintentional Other Specified 336,990	Other Assault* Struck By/Against 207,287	Unintentional Poisoning 237,328	Unintentional Poisoning 153,767	Unintentional Other Bite/Sting 90,850	Other Assault* Struck By/Against 1,291,100
8	Unintentional Cut/Pierce 7,139	Unintentional Fire/Burn 52,884	Unintentional MV-Occupant 58,114	Unintentional Other Bite/Sting 64,848	Unintentional Other Bite/Sting 177,665	Unintentional Other Bite/Sting 180,922	Unintentional Poisoning 175,870	Other Assault* Struck By/Against 169,688	Unintentional Other Bite/Sting 97,474	Unintentional Other Specified 86,729	Unintentional Other Bite/Sting 1,174,267
9	Unintentional Unknown/Unspecified 5,735	Unintentional Unknown/Unspecified 41,297	Unintentional Dog Bite 43,499	Other Assault* Struck By/Against 62,829	Unintentional Unknown/Unspecified 163,923	Unintentional Poisoning 180,448	Unintentional Other Bite/Sting 138,410	Unintentional Other Bite/Sting 145,349	Other Assault* Struck By/Against 73,674	Unintentional Unknown/Unspecified 74,864	Unintentional Poisoning 1,055,960
10	Unintentional Overexertion 4,985	Unintentional Poisoning 32,443	Unintentional Unknown/Unspecified 35,303	Unintentional Other Transport 35,609	Unintentional Poisoning 152,962	Unintentional Unknown/Unspecified 129,308	Unintentional Unknown/Unspecified 106,498	Unintentional Unknown/Unspecified 110,102	Unintentional Unknown/Unspecified 67,974	Unintentional Other Transport 68,022	Unintentional Unknown/Unspecified 819,878

*The "Other Assault" category includes all assaults that are not classified as sexual assault. It represents the majority of assaults.

**Injury estimate is unstable because of small sample size.

Data Source: NEISS All Injury Program operated by the Consumer Product Safety Commission (CPSC).

Produced by: National Center for Injury Prevention and Control, CDC using WISQARS™.



10 Leading Causes of Death by Age Group, United States – 2014

Rank	Age Groups										Total
	<1	1-4	5-9	10-14	15-24	25-34	35-44	45-54	55-64	65+	
1	Congenital Anomalies 4,746	Unintentional Injury 1,216	Unintentional Injury 730	Unintentional Injury 750	Unintentional Injury 11,836	Unintentional Injury 17,357	Unintentional Injury 16,048	Malignant Neoplasms 44,834	Malignant Neoplasms 115,282	Heart Disease 489,722	Heart Disease 614,348
2	Short Gestation 4,173	Congenital Anomalies 399	Malignant Neoplasms 436	Suicide 425	Suicide 5,079	Suicide 6,569	Malignant Neoplasms 11,267	Heart Disease 34,791	Heart Disease 74,473	Malignant Neoplasms 413,885	Malignant Neoplasms 591,699
3	Maternal Pregnancy Comp. 1,574	Homicide 364	Congenital Anomalies 192	Malignant Neoplasms 416	Homicide 4,144	Homicide 4,159	Heart Disease 10,368	Unintentional Injury 20,610	Unintentional Injury 18,030	Chronic Low. Respiratory Disease 124,693	Chronic Low. Respiratory Disease 147,101
4	SIDS 1,545	Malignant Neoplasms 321	Homicide 123	Congenital Anomalies 156	Malignant Neoplasms 1,569	Malignant Neoplasms 3,624	Suicide 6,706	Suicide 8,767	Chronic Low. Respiratory Disease 16,492	Cerebro-vascular Disease 113,308	Unintentional Injury 136,053
5	Unintentional Injury 1,161	Heart Disease 149	Heart Disease 69	Homicide 156	Heart Disease 953	Heart Disease 3,341	Homicide 2,588	Liver Disease 8,627	Diabetes Mellitus 13,342	Alzheimer's Disease 92,604	Cerebro-vascular Disease 133,103
6	Placenta Cord. Membranes 965	Influenza & Pneumonia 109	Chronic Low. Respiratory Disease 68	Heart Disease 122	Congenital Anomalies 377	Liver Disease 725	Liver Disease 2,582	Diabetes Mellitus 6,062	Liver Disease 12,792	Diabetes Mellitus 54,161	Alzheimer's Disease 93,541
7	Bacterial Sepsis 544	Chronic Low Respiratory Disease 53	Influenza & Pneumonia 57	Chronic Low Respiratory Disease 71	Influenza & Pneumonia 199	Diabetes Mellitus 709	Diabetes Mellitus 1,999	Cerebro-vascular Disease 5,349	Cerebro-vascular Disease 11,727	Unintentional Injury 48,295	Diabetes Mellitus 76,488
8	Respiratory Distress 460	Septicemia 53	Cerebro-vascular Disease 45	Cerebro-vascular Disease 43	Diabetes Mellitus 181	HIV 583	Cerebro-vascular Disease 1,745	Chronic Low. Respiratory Disease 4,402	Suicide 7,527	Influenza & Pneumonia 44,836	Influenza & Pneumonia 55,227
9	Circulatory System Disease 444	Benign Neoplasms 38	Benign Neoplasms 36	Influenza & Pneumonia 41	Chronic Low Respiratory Disease 178	Cerebro-vascular Disease 579	HIV 1,174	Influenza & Pneumonia 2,731	Septicemia 5,709	Nephritis 39,957	Nephritis 48,146
10	Neonatal Hemorrhage 441	Perinatal Period 38	Septicemia 33	Benign Neoplasms 38	Cerebro-vascular Disease 177	Influenza & Pneumonia 549	Influenza & Pneumonia 1,125	Septicemia 2,514	Influenza & Pneumonia 5,390	Septicemia 29,124	Suicide 42,773

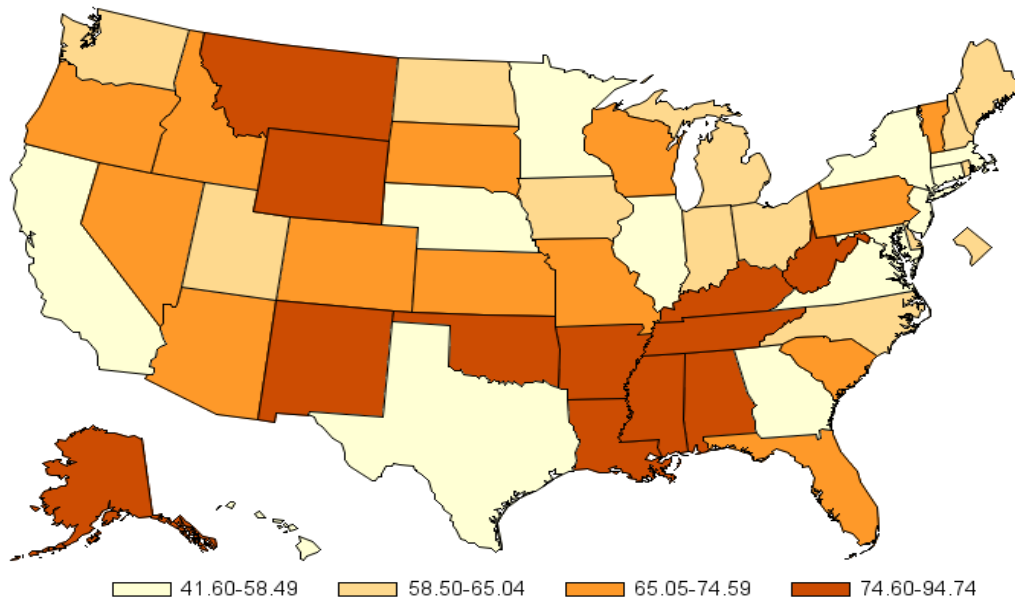
Data Source: National Vital Statistics System, National Center for Health Statistics, CDC.
Produced by: National Center for Injury Prevention and Control, CDC using WISQARS™.



Centers for Disease Control and Prevention
National Center for Injury Prevention and Control

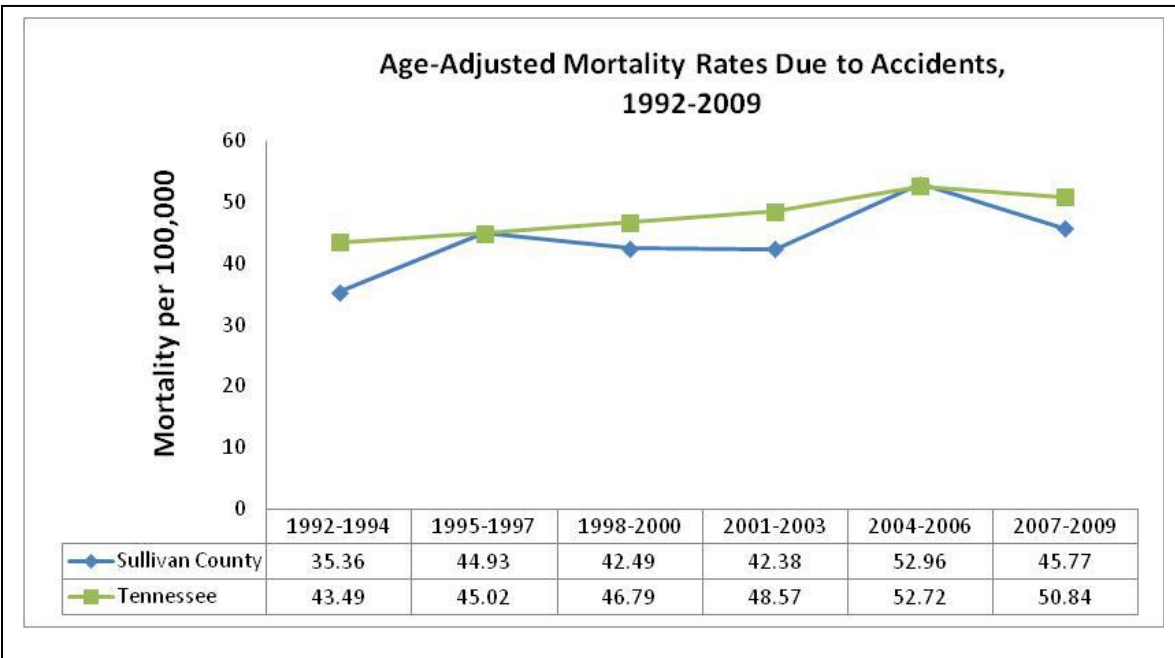
2008-2014, United States Death Rates per 100,000 Population

All Injury, All Intents, All Races, All Ethnicities, Both Sexes, All Ages
Annualized Crude Rate for United States: 60.06



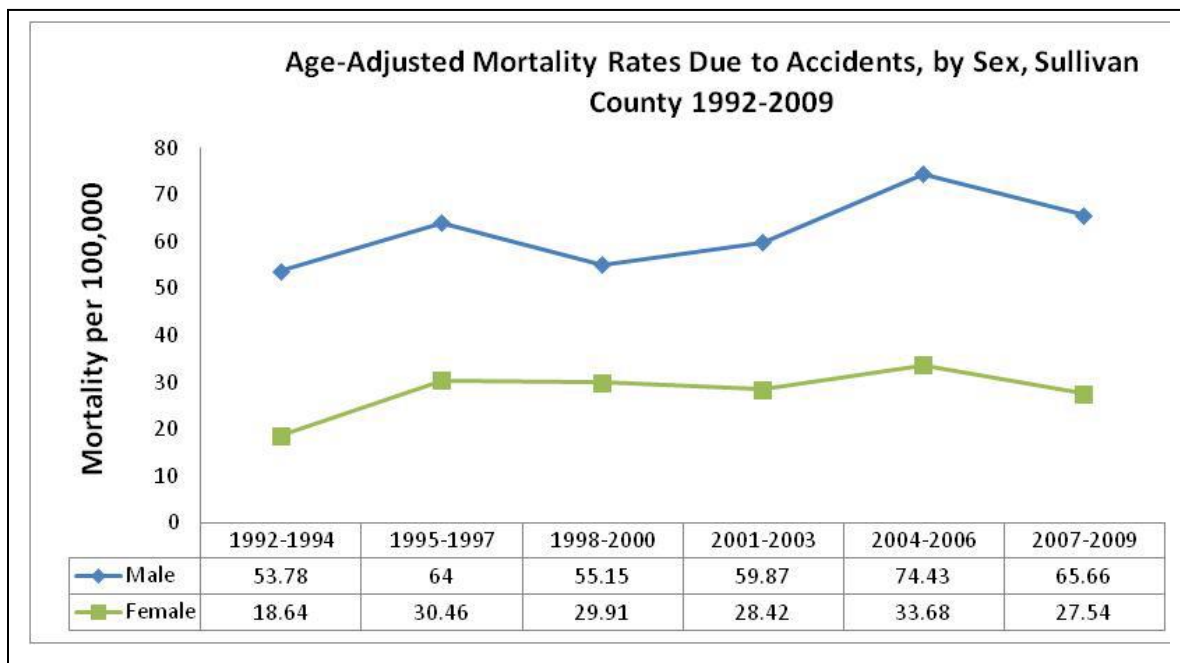
Reports for All Ages include those of unknown age.

* Rates based on 20 or fewer deaths may be unstable. States with these rates are cross-hatched in the map (see legend above). Such rates have an asterisk.



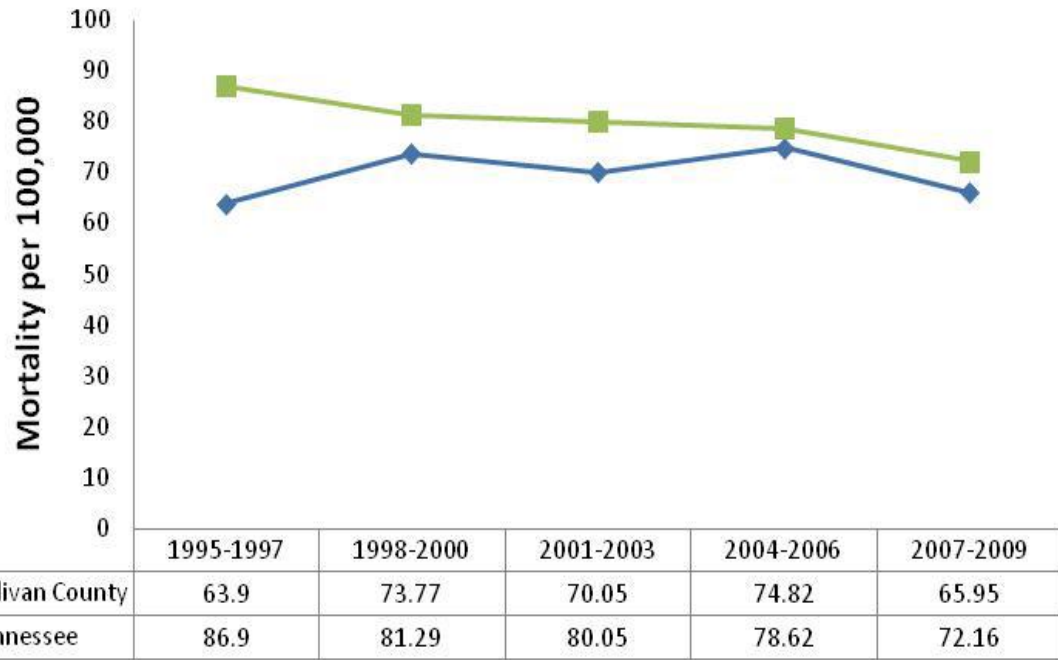
Source: Tennessee Department of Health, Division of Health Statistics. Health Information Tennessee.

Males in Sullivan County are more likely to die from an accident than females. Mortality due to accidents in 2009 was more than double for men (65.66 per 100,000) than for women (27.54 per 100,000).



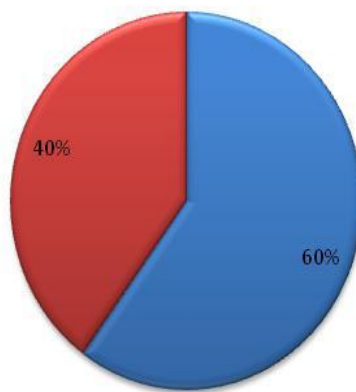
Source: Tennessee Department of Health, Division of Health Statistics. Health Information Tennessee.

Child Mortality Rates (Ages 0-17), 1995-2009



2011 Child Mortality by Cause of Death

■ Medical Causes ■ External Causes



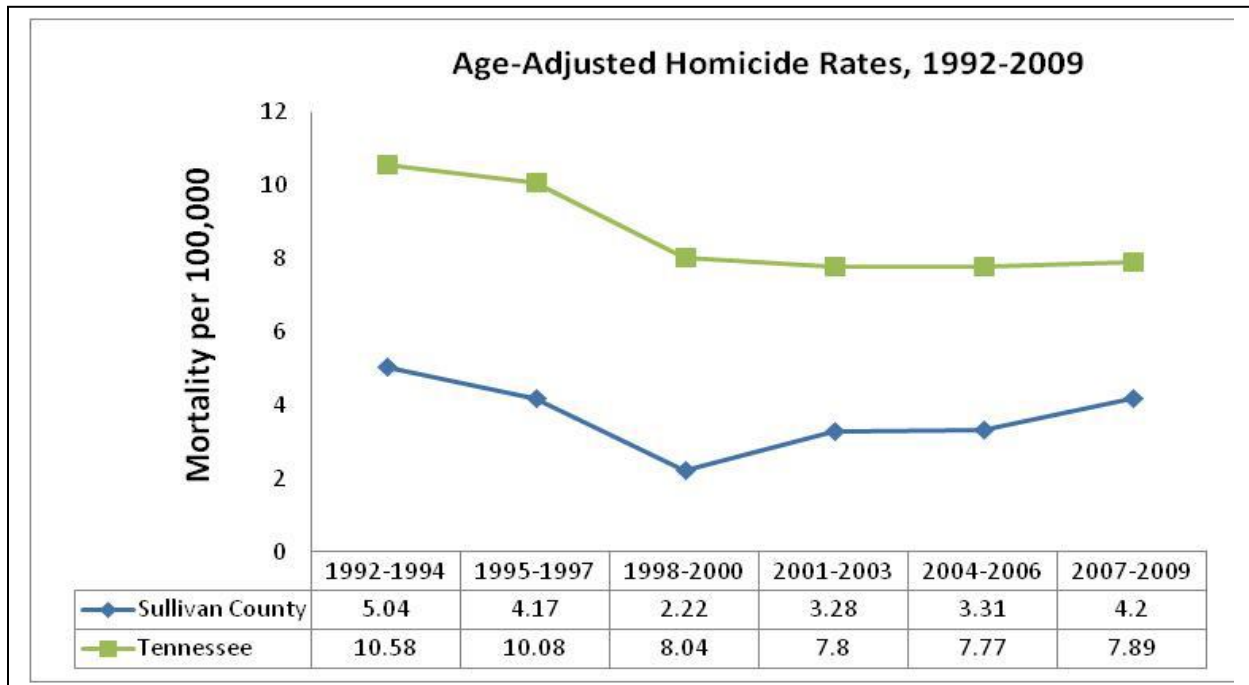
10 Leading Causes of Injury Deaths by Age Group Highlighting Violence-Related Injury Deaths, United States – 2014

Rank	Age Groups										Total
	<1	1-4	5-9	10-14	15-24	25-34	35-44	45-54	55-64	65+	
1	Unintentional Suffocation 991	Unintentional Drowning 388	Unintentional MV Traffic 345	Unintentional MV Traffic 384	Unintentional MV Traffic 6,531	Unintentional Poisoning 9,334	Unintentional Poisoning 9,116	Unintentional Poisoning 11,009	Unintentional Poisoning 7,013	Unintentional Fall 27,044	Unintentional Poisoning 42,032
2	Homicide Unspecified 119	Unintentional MV Traffic 293	Unintentional Drowning 125	Suicide Suffocation 225	Homicide Firearm 3,587	Unintentional MV Traffic 5,856	Unintentional MV Traffic 4,308	Unintentional MV Traffic 5,024	Unintentional MV Traffic 4,554	Unintentional MV Traffic 6,373	Unintentional MV Traffic 33,736
3	Homicide Other Spec., Classifiable 83	Homicide Unspecified 149	Unintentional Fire/Burn 68	Suicide Firearm 174	Unintentional Poisoning 3,492	Homicide Firearm 3,260	Suicide Firearm 2,830	Suicide Firearm 3,953	Suicide Firearm 3,910	Suicide Firearm 5,367	Unintentional Fall 31,959
4	Unintentional MV Traffic 61	Unintentional Suffocation 120	Homicide Firearm 58	Homicide Firearm 115	Suicide Firearm 2,270	Suicide Firearm 2,829	Suicide Suffocation 2,057	Suicide Suffocation 2,321	Unintentional Fall 2,558	Unintentional Unspecified 4,590	Suicide Firearm 21,334
5	Undetermined Suffocation 40	Unintentional Fire/Burn 117	Unintentional Other Land Transport 36	Unintentional Drowning 105	Suicide Suffocation 2,010	Suicide Suffocation 2,402	Homicide Firearm 1,835	Suicide Poisoning 1,795	Suicide Poisoning 1,529	Unintentional Suffocation 3,692	Suicide Suffocation 11,407
6	Unintentional Drowning 29	Unintentional Pedestrian, Other 107	Unintentional Suffocation 34	Unintentional Fire/Burn 49	Unintentional Drowning 507	Suicide Poisoning 800	Suicide Poisoning 1,274	Unintentional Fall 1,340	Suicide Suffocation 1,509	Unintentional Poisoning 1,993	Homicide Firearm 10,945
7	Homicide Suffocation 26	Homicide Other Spec., Classifiable 73	Unintentional Natural/Environment 22	Unintentional Other Land Transport 49	Suicide Poisoning 363	Undetermined Poisoning 575	Undetermined Poisoning 637	Homicide Firearm 1,132	Unintentional Suffocation 698	Adverse Effects 1,554	Suicide Poisoning 6,808
8	Unintentional Natural/Environment 17	Homicide Firearm 47	Unintentional Pedestrian, Other 18	Unintentional Suffocation 33	Homicide Cut/Pierce 314	Homicide Cut/Pierce 430	Unintentional Fall 504	Undetermined Poisoning 820	Undetermined Poisoning 539	Unintentional Fire/Burn 1,151	Unintentional Suffocation 6,580
9	Undetermined Unspecified 16	Unintentional Struck by or Against 38	Unintentional Struck by or Against 16	Unintentional Poisoning 22	Undetermined Poisoning 229	Unintentional Drowning 399	Unintentional Drowning 363	Unintentional Suffocation 452	Homicide Firearm 538	Suicide Poisoning 1,028	Unintentional Unspecified 5,848
10	Unintentional Fire/Burn 15	Unintentional Natural/Environment 35	Homicide Unspecified (Tied) 14	Homicide Cut/Pierce 19	Unintentional Other Land Transport 177	Unintentional Fall 285	Homicide Cut/Pierce 313	Unintentional Drowning 442	Unintentional Unspecified 530	Suicide Suffocation 880	Unintentional Drowning 3,406

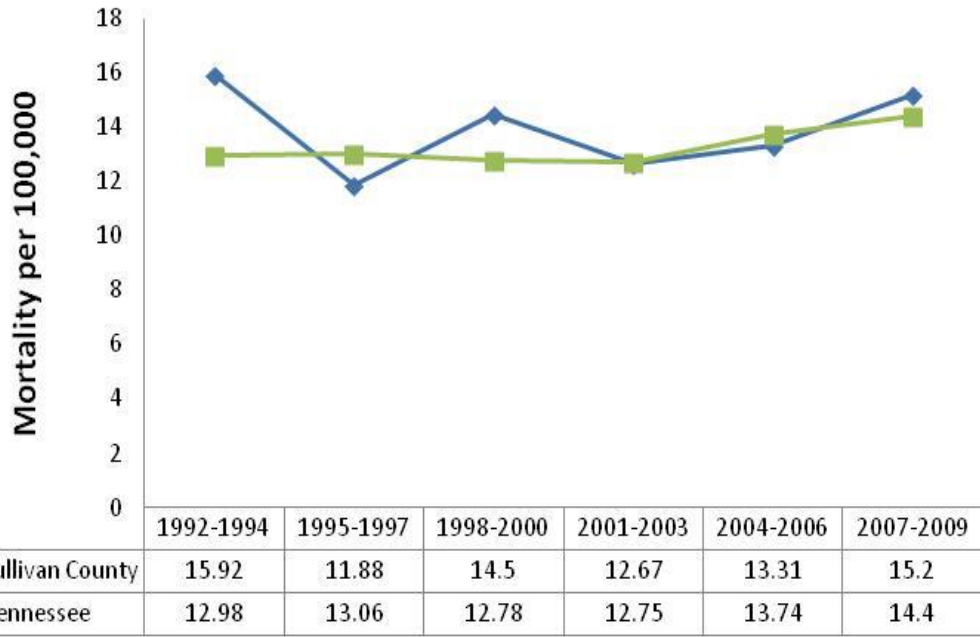
Data Source: National Center for Health Statistics (NCHS), National Vital Statistics System.
Produced by: National Center for Injury Prevention and Control, CDC using WISQARS™.



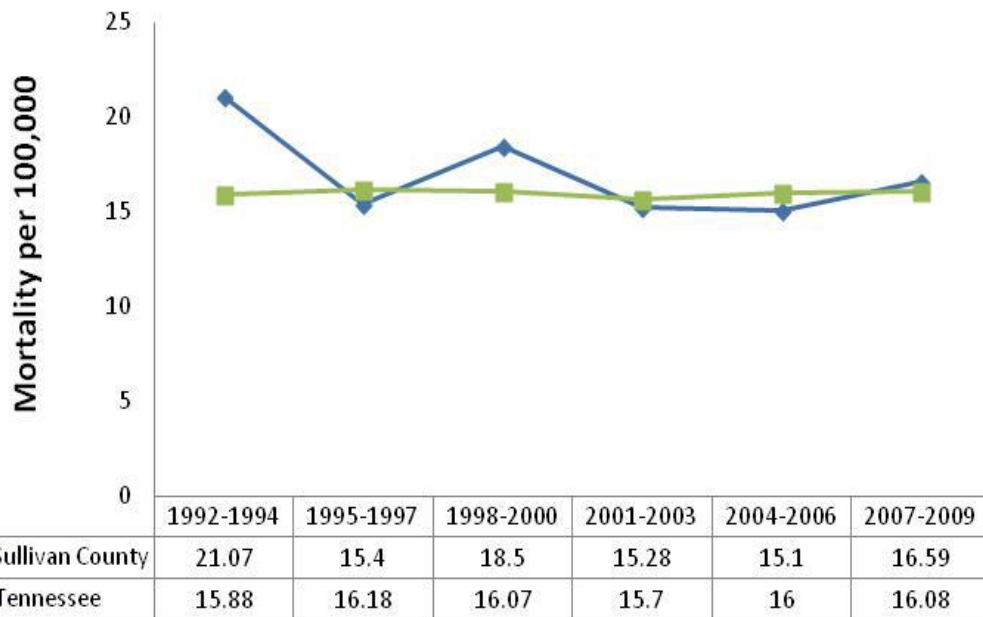
Centers for Disease Control and Prevention
National Center for Injury Prevention and Control

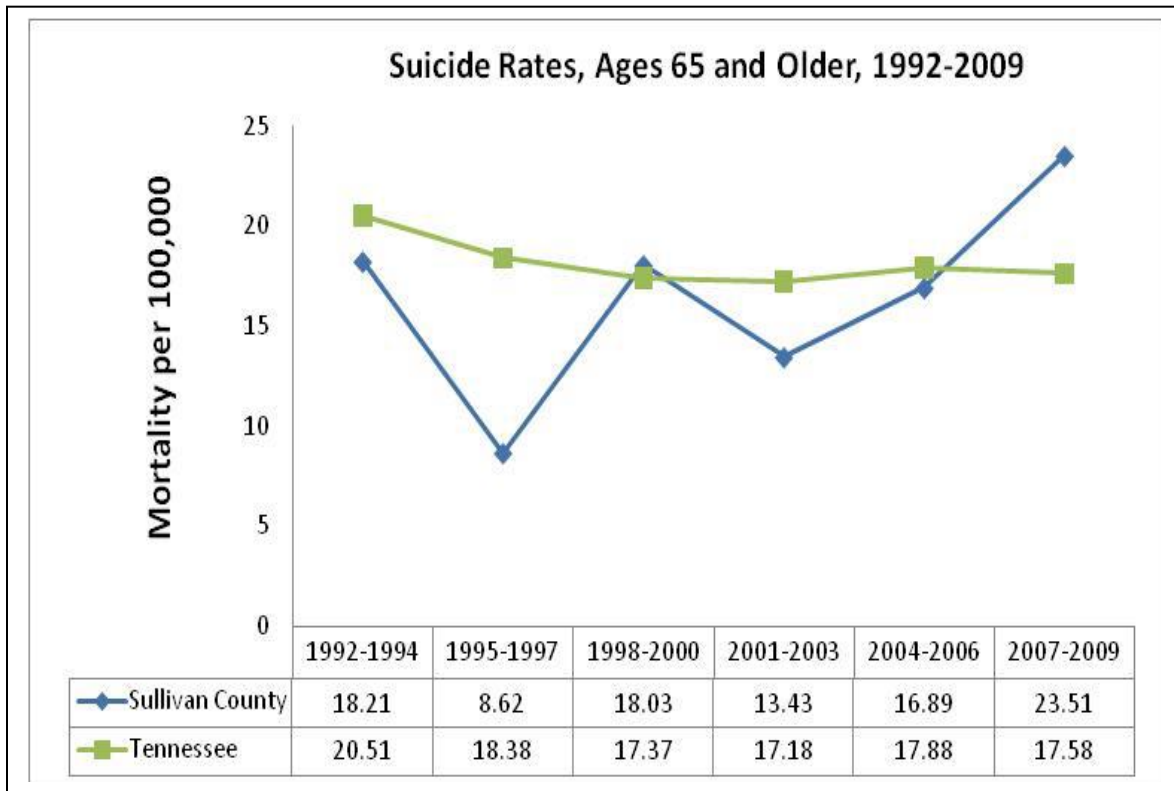


Age-Adjusted Suicide Rates, 1992-2009



Suicide Rates, Ages 15-44, 1992-2009



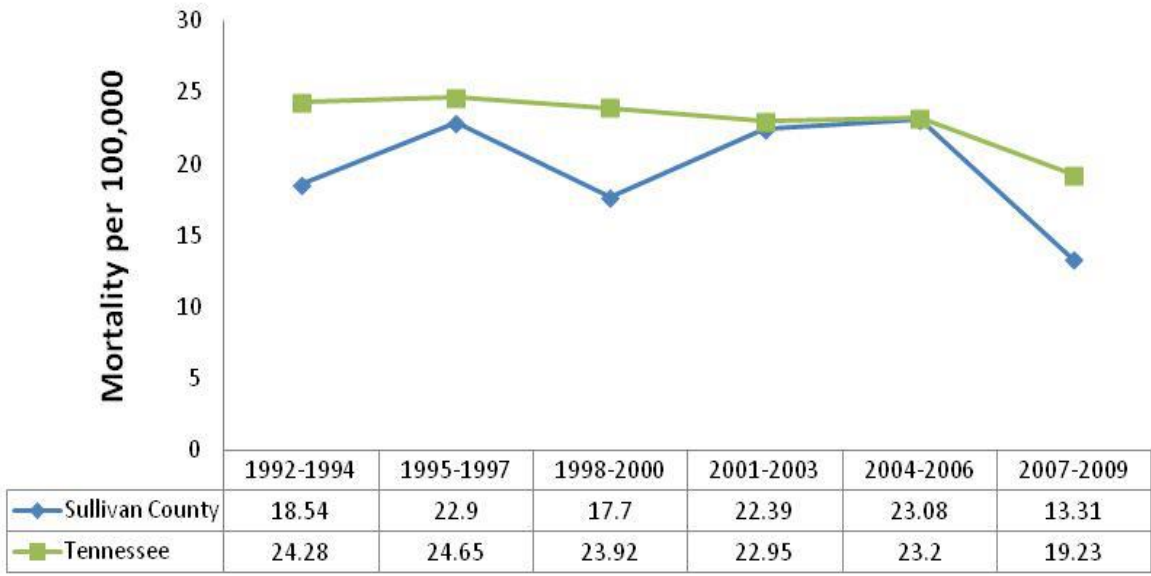


Motor Vehicle Accidents

In 2011, the overall crash rate for Sullivan County was 32.27 crashes per 1,000 licensed drivers. The overall crash rate has gradually increased since 2009. The lowest rate was in 2009 (30.5 crashes per 1,000 licensed drivers). From 2007 through 2009, Sullivan County had 19.23 deaths per 100,000 due to motor vehicle accidents. Mortality from motor-vehicle accidents varies from year-to-year in Sullivan County, whereas it has remained somewhat stable in Tennessee.

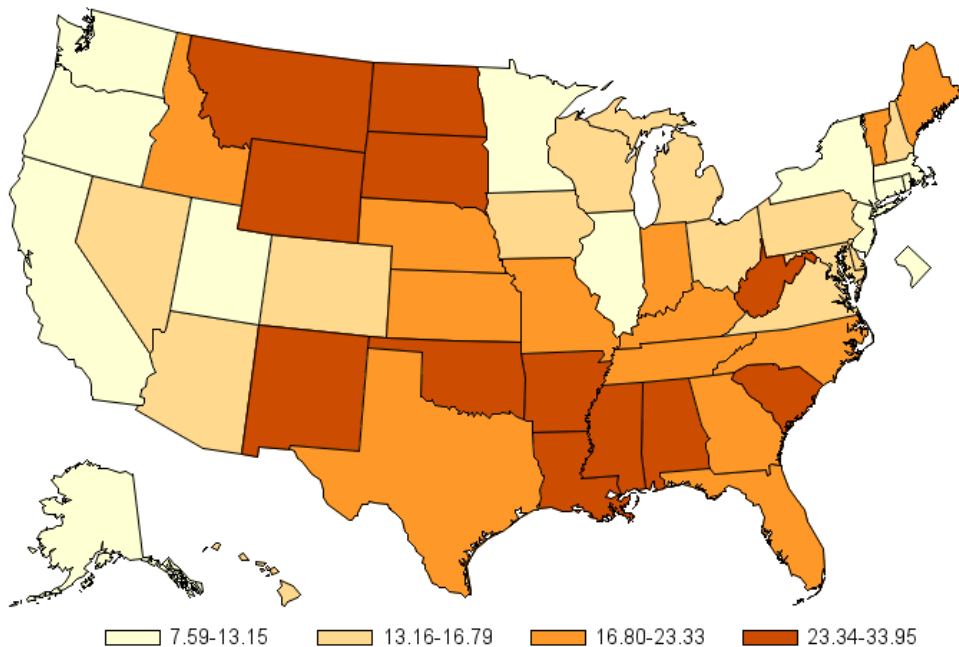
<i>Tennessee Counties Ranked Worst to Best on a Scale of 1 to 95 Based on Crash Rate (lower values indicate problem area)</i>			
	<i>Worst Ranking</i>	<i>Best Ranking</i>	<i>Sullivan County Ranking</i>
<i>Overall</i>	<i>Davidson</i>	<i>Bledsoe</i>	<i>28</i>
<i>Fatal</i>	<i>Grundy</i>	<i>Pickett</i>	<i>87</i>
<i>Injury</i>	<i>Davidson</i>	<i>Bledsoe</i>	<i>17</i>
<i>Senior Driver</i>	<i>Putnam</i>	<i>Jackson</i>	<i>19</i>
<i>Young Driver</i>	<i>Putnam</i>	<i>Putnam</i>	<i>20</i>
<i>Speed Related</i>	<i>Hancock</i>	<i>Bledsoe</i>	<i>42</i>
<i>Alcohol Related</i>	<i>Perry</i>	<i>Pickett</i>	<i>41</i>

Age-Adjusted Mortality Rates Due to Motor Vehicle Accidents, 1992-2009



2008-2014, United States Death Rates per 100,000 Population

Motor Vehicle, Traffic, All Intents, All Races, All Ethnicities, Both Sexes, Ages 15-24 Years
Annualized Crude Rate for United States: 16.32

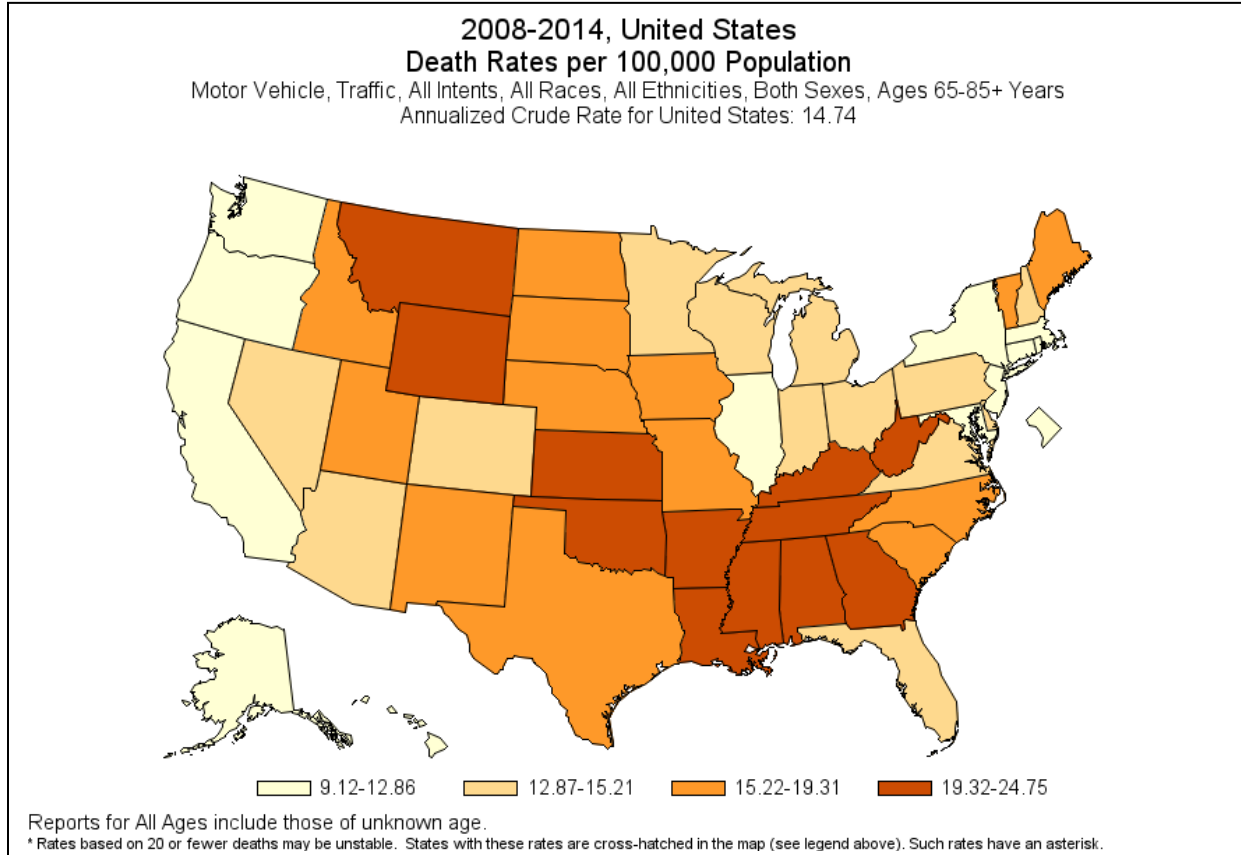


Reports for All Ages include those of unknown age.

* Rates based on 20 or fewer deaths may be unstable. States with these rates are cross-hatched in the map (see legend above). Such rates have an asterisk.

Sullivan Co, TN						
	2010	2011	2012	2013	2014	2015
Teen Crash	1658	1768	1576	1352	1425	1562
Teen Crash Rate per 100,000	103.06	110.03	101.11	86.61	91.36	101.79
Teen Traffic Fatalities	n/a	n/a	2	3	0	1

Teen fatality rate change 2015-2016 – 0.0%
 Teen fatality rate change 2012-2016- -50.0%



Tennessee Seniors 65+ 2008-2012	Sullivan County	National Rate
Total	39.25	
Average Crash Rate	29.58	
ER Visits	835	
ER Visit Rates	579.37	
In Patient Visits per 100,000	107	
In Patient Visits Rate	74.24	
Deaths	21	
Death Rates	14.57	14.74

Sullivan County MVC	2010	2011	2012	2013	2014	2015
Total Crashes	3899	3982	4008	3639	3835	1562
Total Crash Rate Per 100,000	31.65	32.27	32.55	20.04	31.23	31.20
Injury Rate per 100,000	9.08	9.96	9.41	7.16	7.92	8.41
Fatalities	5	1	9	5	7	2
ETOH Crashes	89	132	171	119	126	89
ETOH Fatalities	5	1	9	5	7	2
Crash with Speeding	164	172	200	125	155	159
Crash with Speeding rates Per 100,000	1.33	1.39	1.67	1.01	1.25	1.29

Table 1: Patient and Injury Characteristics

	All Patients	Blunt Multisystem	Penetrating	Shock	Severe TBI	Elderly	Elderly Blunt Multisystem	Isolated Hip Fracture ¹
N	252,785	45,145	13,238	9,797	9,285	82,431	10,289	20,490
Age Category (%)								
18-25 years	15.9	20.8	37.3	19.3	18.4	0.0	0.0	0.0
26-54 years	38.2	41.7	55.3	43.6	37.7	0.0	0.0	0.0
55-64 years	15.3	14.7	4.8	15.4	13.6	0.0	0.0	0.0
≥65 years	32.6	22.8	2.6	21.7	30.4	100.0	100.0	100.0
Mean Age (years)	52.6	47.2	32.7	47.1	50.5	78.6	77.0	82.0
Male Gender (%)	65.0	68.1	88.8	69.8	72.9	47.5	53.2	30.8
Race (%)								
White	75.2	77.0	36.4	68.8	73.7	87.2	87.1	90.1
Black	13.6	11.4	47.7	18.9	12.4	5.4	5.0	4.5
Asian	2.2	2.2	1.2	1.9	2.9	2.5	2.5	1.3
Other	8.9	9.4	14.8	10.4	11.0	4.9	5.4	4.1
Missing	3.2	4.2	4.6	4.2	4.7	2.8	4.1	3.0
Transferred Patients (%)	31.2	25.5	17.0	18.5	35.4	39.6	35.6	16.7
Mechanism (%)								
Fall	42.9	21.4	0.0	20.6	47.9	76.0	48.3	100.0
MVT Occupant and Other	22.6	43.0	0.0	27.9	13.6	12.9	31.9	0.0
MVT Motorcyclist	7.0	13.3	0.0	8.8	4.7	1.7	4.6	0.0
Struck by/Against	5.3	2.6	0.0	2.4	7.7	1.8	1.5	0.0
Firearm	5.9	0.0	54.7	17.1	13.8	0.6	0.0	0.0
Cut/Pierce	3.0	0.0	45.3	7.6	0.4	0.3	0.0	0.0
Pedestrian Pedal	7.4	12.7	0.0	11.1	7.4	4.0	9.5	0.0
Other	6.0	7.1	0.0	4.4	4.3	2.7	4.3	0.0
Pre-Hospital Cardiac Arrest	0.9	2.1	2.1	5.8	4.0	0.6	1.9	0.1

Holston Valley Level 1 Trauma Center TQIP report. Spring 2016

Unintentional Injury Mortality

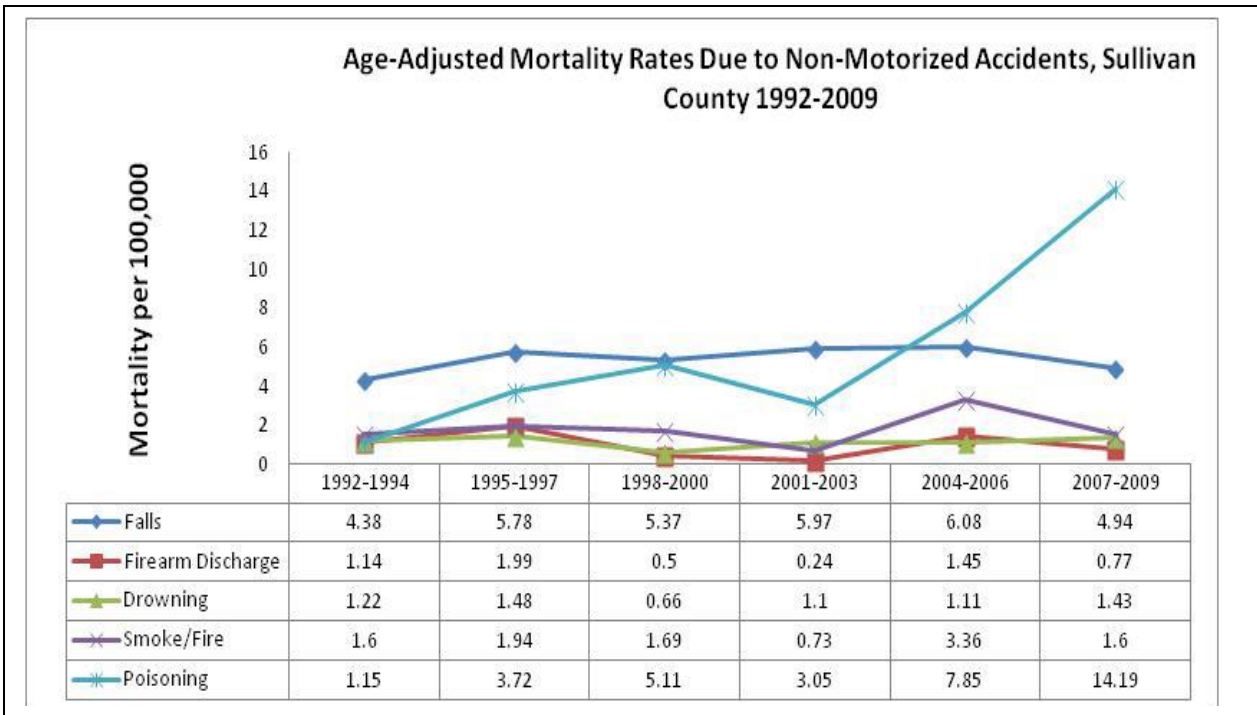
Mortality due to unintentional injury includes falls, death due to firearm discharge, drowning, smoke/fire, and poisoning (unspecified source). Death due to poisoning is the leading cause of unintentional injury in Sullivan County. After poisoning, falls are the second leading cause of death due to unintentional injury, followed by drowning, smoke/fire and death due to firearm discharge

10 Leading Causes of Injury Deaths by Age Group Highlighting Unintentional Injury Deaths, United States – 2014

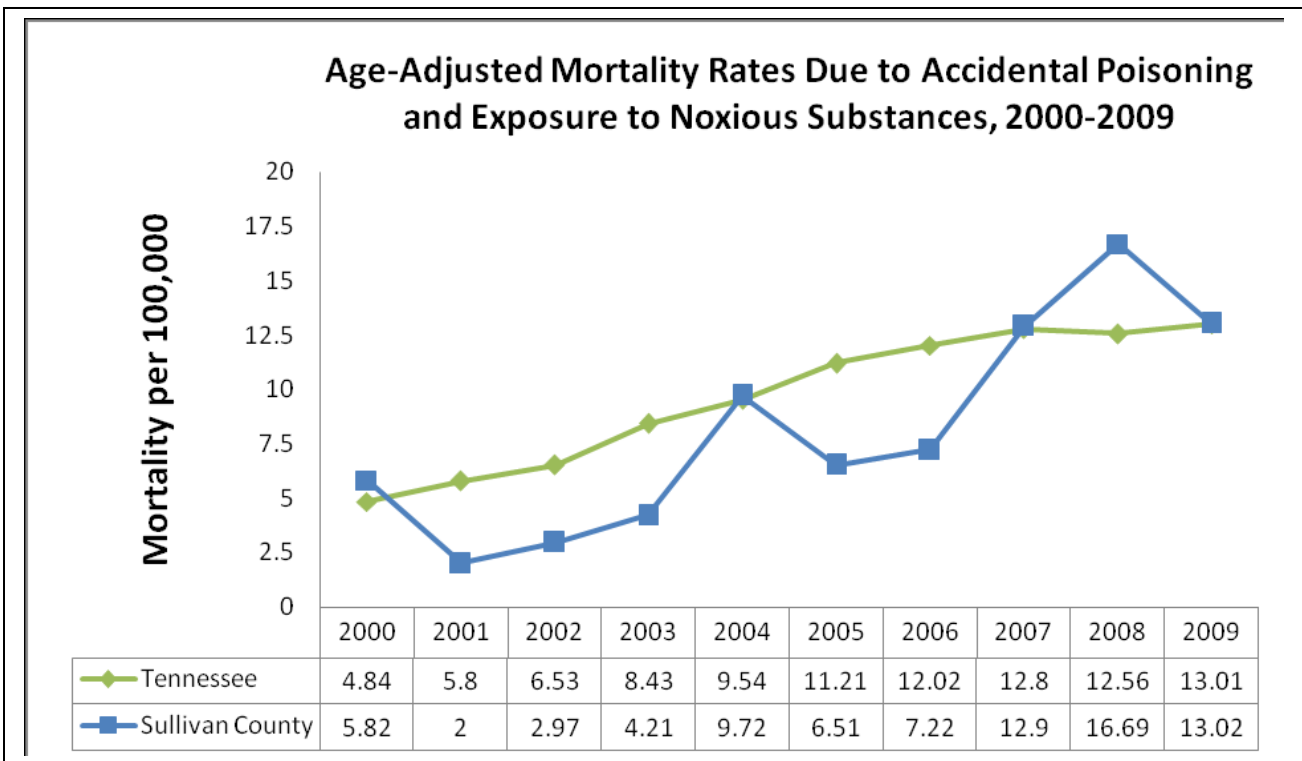
Rank	Age Groups										Total
	<1	1-4	5-9	10-14	15-24	25-34	35-44	45-54	55-64	65+	
1	Unintentional Suffocation 991	Unintentional Drowning 388	Unintentional MV Traffic 345	Unintentional MV Traffic 384	Unintentional MV Traffic 6,531	Unintentional Poisoning 9,334	Unintentional Poisoning 9,116	Unintentional Poisoning 11,009	Unintentional Poisoning 7,013	Unintentional Fall 27,044	Unintentional Poisoning 42,032
2	Homicide Unspecified 119	Unintentional MV Traffic 293	Unintentional Drowning 125	Suicide Suffocation 225	Homicide Firearm 3,587	Unintentional MV Traffic 5,856	Unintentional MV Traffic 4,308	Unintentional MV Traffic 5,024	Unintentional MV Traffic 4,554	Unintentional MV Traffic 6,373	Unintentional MV Traffic 33,736
3	Homicide Other Spec., Classifiable 83	Homicide Unspecified 149	Unintentional Fire/Burn 68	Suicide Firearm 174	Unintentional Poisoning 3,492	Homicide Firearm 3,260	Suicide Firearm 2,830	Suicide Firearm 3,953	Suicide Firearm 3,910	Suicide Firearm 5,367	Unintentional Fall 31,959
4	Unintentional MV Traffic 61	Unintentional Suffocation 120	Homicide Firearm 58	Homicide Firearm 115	Suicide Firearm 2,270	Suicide Firearm 2,829	Suicide Suffocation 2,057	Suicide Suffocation 2,321	Unintentional Fall 2,558	Unintentional Unspecified 4,590	Suicide Firearm 21,334
5	Undetermined Suffocation 40	Unintentional Fire/Burn 117	Unintentional Other Land Transport 36	Unintentional Drowning 105	Suicide Suffocation 2,010	Suicide Suffocation 2,402	Homicide Firearm 1,835	Suicide Poisoning 1,795	Suicide Poisoning 1,529	Unintentional Suffocation 3,692	Suicide Suffocation 11,407
6	Unintentional Drowning 29	Unintentional Pedestrian, Other 107	Unintentional Suffocation 34	Unintentional Fire/Burn 49	Unintentional Drowning 507	Suicide Poisoning 800	Suicide Poisoning 1,274	Unintentional Fall 1,340	Suicide Suffocation 1,509	Unintentional Poisoning 1,993	Homicide Firearm 10,945
7	Homicide Suffocation 26	Homicide Other Spec., Classifiable 73	Unintentional Natural/Environment 22	Unintentional Other Land Transport 49	Suicide Poisoning 363	Undetermined Poisoning 575	Undetermined Poisoning 637	Homicide Firearm 1,132	Unintentional Suffocation 698	Adverse Effects 1,554	Suicide Poisoning 6,808
8	Unintentional Natural/Environment 17	Homicide Firearm 47	Unintentional Pedestrian, Other 18	Unintentional Suffocation 33	Homicide Cut/Pierce 314	Homicide Cut/Pierce 430	Unintentional Fall 504	Undetermined Poisoning 820	Undetermined Poisoning 539	Unintentional Fire/Burn 1,151	Unintentional Suffocation 6,580
9	Undetermined Unspecified 16	Unintentional Struck by or Against 38	Unintentional Struck by or Against 16	Unintentional Poisoning 22	Undetermined Poisoning 229	Unintentional Drowning 399	Unintentional Drowning 363	Unintentional Suffocation 452	Homicide Firearm 538	Suicide Poisoning 1,028	Unintentional Unspecified 5,848
10	Unintentional Fire/Burn 15	Unintentional Natural/Environment 35	Unintentional Firearm (Tied) 14	Homicide Cut/Pierce 19	Unintentional Other Land Transport 177	Unintentional Fall 285	Homicide Cut/Pierce 313	Unintentional Drowning 442	Unintentional Unspecified 530	Suicide Suffocation 880	Unintentional Drowning 3,406

Data Source: National Center for Health Statistics (NCHS), National Vital Statistics System.
Produced by: National Center for Injury Prevention and Control, CDC using WISQARS™.



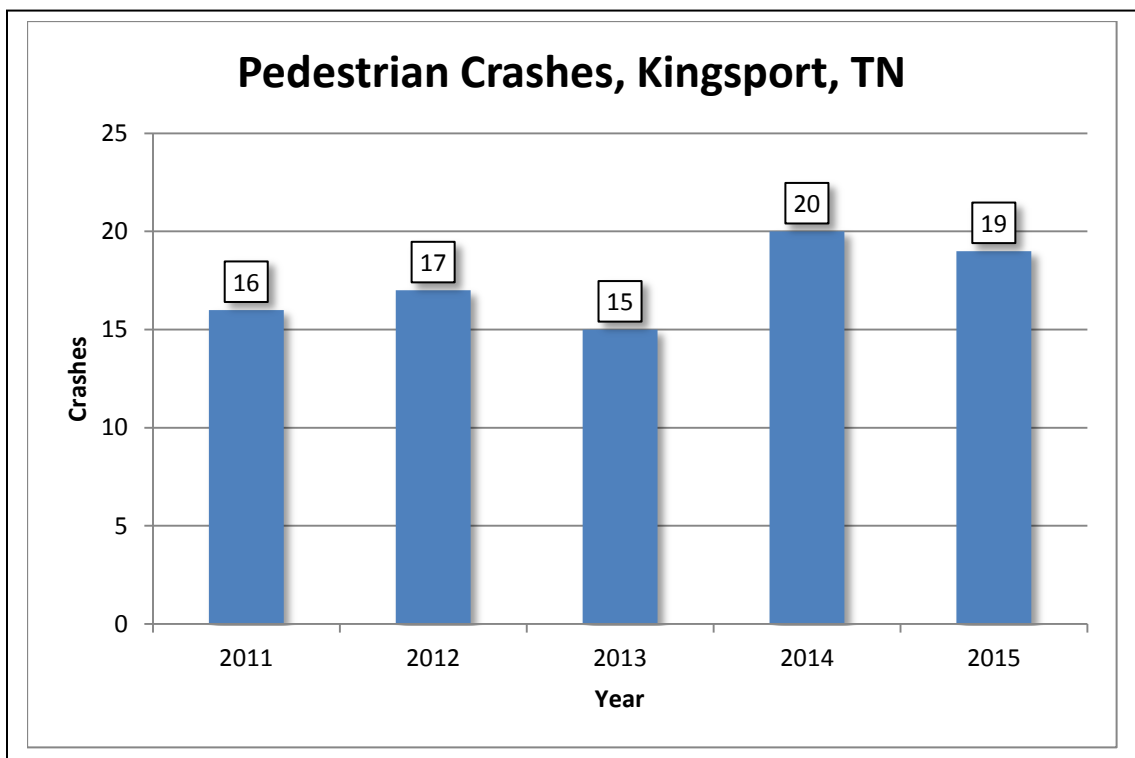


Source: Tennessee Department of Health, Division of Health Statistics. Health Information Tennessee.



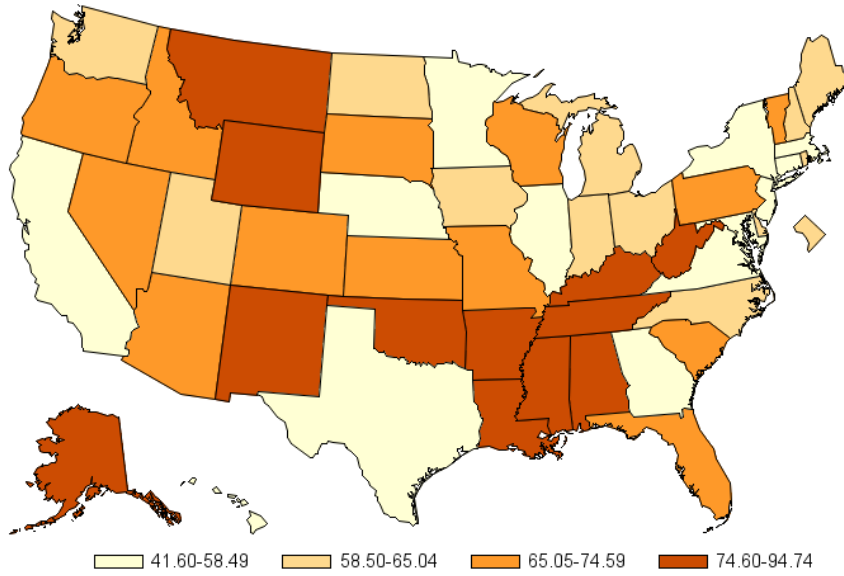
Sullivan Co, TN	2010	2011	2012	2013	2014	2015
Pedestrian Injury	21	32	24	23	23	26
Pedestrian Fatalities	5	1	1	1	1	1

Pedestrian incidents continue to be on the rise in the last 6 years however the number of fatalities has decreased.



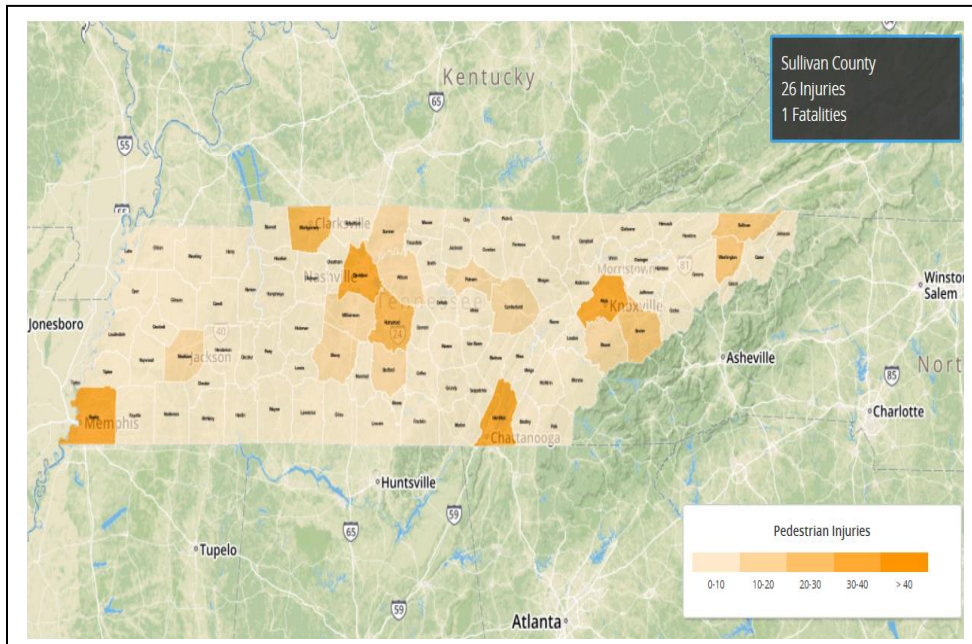
- Crashes: 87 (+18.8% since 2011)
- Pedestrians: 94 (+29.4% since 2011)
- 87% of pedestrians involved in crashes were injured, and 3% were killed.
- Over two-thirds of involved pedestrians were struck Tuesday through Friday.

2008-2014, United States
Death Rates per 100,000 Population
 All Injury, All Intents, All Races, All Ethnicities, Both Sexes, All Ages
 Annualized Crude Rate for United States: 60.06



Reports for All Ages include those of unknown age.
 * Rates based on 20 or fewer deaths may be unstable. States with these rates are cross-hatched in the map (see legend above). Such rates have an asterisk.

Produced by: the Statistics, Programming & Economics Branch, National Center for Injury Prevention & Control, CDC
Data Sources: NCES National Vital Statistics System for numbers of deaths; US Census Bureau for population estimates.



Fall Rate per 100,000	Total	2010	2011	2012	2013	2014	2015
AGE							
<5	75	19	20	13	7	7	9
5-18	185	43	48	35	15	23	21
19-25	73	21	15	12	6	12	6
26-35	9	20	25	23	14	16	12
36-55	679	152	138	131	92	85	81
56-65	666	116	148	117	89	92	103
>65	3406	589	686	617	501	458	553
Gender							
Male	2026	388	431	363	281	277	285
Female	3168	572	649	585	443	416	500
Total Admits	5194/ 51%	960/ 50%	1080 / 53%	948 / 53%	724/ 49%	693/ 47%	785/ 53%
Leading Cause of Falls	Same level tripping, slipping, stumbling	Same level tripping, slipping, stumbling	Same level tripping, slipping, stumbling	Same level tripping, slipping, stumbling	Same level tripping, slipping, stumbling	Same level tripping, slipping, stumbling	Same level tripping, slipping, stumbling

DATA Summary Statement

Type of Injury	Trend
Falls	Falls continues to be the leading mechanism of injury as represented by total number of admissions with the Level 1 trauma Center. Age 65+ is the greatest volume and the largest percentage MOI being slipping, tripping, and stumbling. Ages 36-55 and 56-65 next ages with greatest volume. A steady decrease was noted 2012 to 2014 however an increase returned in 2015.
Traffic Safety	Largest age population of crashes is 18-29. Peak fatalities and crash rates occurred in 2012 with a sharp decline in 2013 followed by a slight increase in 2014 and remaining stable in 2015. Associated with the peak was the highest rate of ETOH related crashes and fatalities. 2012 also saw the highest speed related crashes.
Substance Abuse/misuse	Substance abuse is continuing to grow as a leading cause of public health and safety issues. Sullivan County is collectively pursuing interventions, action plans and goals through the Sullivan Co. Drug Coalition.
Violence and Suicide	Sullivan County has experienced a decrease in aggravated assaults, domestic related incidents and overall violent fatalities from 2012-2015 but have increased in 2016.
Emergency Preparedness	Sullivan County actively participates in a county and city annual disaster drill involving the regional airport located in Sullivan Co and other emergency preparedness activities coordinated through the county EMA, Fire and EMS agencies. From 2011 to 2016 an increase in severe weather related emergencies occurred as compared to previous years

Work Place safety	Work Place safety in Sullivan County is strongly addressed with multiple businesses and factory's located here. Security and safety initiatives are instituted and monitored individually by each agency. Actual data and statistics are not available specific to numbers of incidents.
-------------------	--

Project Goals

Type of Injury	Goals
Falls	<p>Reduce the number of ED visits related to falls by 10% by July 2018 Reduce the number of Hospitalizations secondary to injuries related to a fall by 10% by July 2018</p> <p>Increase the participation of Fall prevention activities with collaboration of agencies within the community. Increase the number of events (stepping on classes or structured training) to 4X annually. Increase participation by 10%</p>
Traffic Safety	<p>Decrease the number of crashes related to speeding by 20% by July 2018 Increase the seatbelt use by 5 % by July 2018 Decrease the number of fatalities due to MVC by 10% by July 2018 Continue support of Helmet use and laws requiring helmets in TN</p>
Substance Abuse/misuse	<p>Reduce the number of ED visits related to drug misuse by 25% by July 2018</p> <p>Reduce the number of drug related MVC by 10% by July 2018.</p>
Violence and Suicide	<p>Reduce the number of domestic and violence related incidents by 10% by July 2018</p> <p>Increase the number of educational events related to anti bullying by July 2018</p>

Emergency Preparedness	<p>Formalize the Field Response team from the Level 1 Trauma Center</p> <p>Increase the number of Emergency Preparedness educational events by July 2018</p>
Work Place safety	<p>Increase the number of collaborative educational events for workplace safety by July 2018</p> <p>Reduce the number of workplace injuries by 10% by July 2018</p>

Data Application and Strategies

Each initiative will have relevant data gathered to be reviewed at the Kingsport Area Safety Council Board meetings. The data will be the basis for selection and or change of programs supported by the Kingsport Area Safety Committee. Other initiatives may be selected also based upon community needs or request.

Data Sources

- Centers of Disease Control
- Holston Valley Trauma Registry data
- Holston Valley Medical Center Trauma Quality and Performance Improvement Reports
- Tennessee Homeland Security Data
- Kingsport Police Department
- Sullivan County Health Department
- Sullivan County Sheriff Department
- Tennessee Highway Traffic Safety Data

Effective Strategies to address injuries

Injury Areas #1 Falls						
Project Name	Project Goal	Project Description	Promising or Evidence based include source	Target Group	Project Length	Partners
Stepping On	Strength Training, Balance, Home safety	Weekly course	Evidence Based https://www.cdc.gov/homeandrecreationalafety/pdf/falls/cdc_falls_compendium-2015-a.pdf p 104-109	Seniors	Ongoing 2X per year	Johnson City Medical Center IP , Kingsport Senior Center
HVMC Parish Nurse Program	Education and screening for fall risk through relationships within churches for reduction in fall rates	Parish nurses provide screening and resources	Promising Effective Parish Nursing: Building a Success and Overcoming Barriers Journal of Christian Nursing: January-March 2008 - Volume 25 - Issue 1 - p 20-25	Seniors	Ongoing	HVMC
Health Occupation Students of America Fall Project	Incorporate Fall risk education and screening into the community through school/students relationships with reduction in fall rates	HOSA department complete fall assessment under community project guidelines and HV Trauma assessment tool	Promising http://www.phf.org/programs/HOSA/Pages/HOSA_Future_Health_Professionals.aspx	All ages, Seniors	Ongoing 1X each school year	Sullivan North HOSA
Remember When	Reduce the number of elderly fire and fall incidents	Education for the elderly on principles that are fire and fall safety prevention practices	Evidenced based https://www.cdc.gov/homeandrecreationalafety/pdf/falls/fallpreventionguide-2015-a.pdf	Elderly	Ongoing 2X per year	Kingsport FD and Level 1 Trauma Center
Maple Oaks Community Coalition	Improve overall wellness, safety and daily living activities for a 175 apartment building complex. Reduce volume of inappropriate calls for EMS, Fire and Law Enforcement	Multiple community agencies participating in assessment, education and interventional activities with the residents of Maple Oaks Apt. Complex to facilitate self-directed activities	Promising American Trauma Society Injury Prevention Coordinators Course Topic- A Public Health Approach to Injury Prevention	All ages, low income, decreased level of physical abilities	Ongoing Bi monthly events	Kingsport FD, Sullivan Co EMS, Kingsport PD, Level 1 Trauma Hospital, Community 211 Resource and other agencies depending on the need of the resident

Injury Area #2 Traffic Safety						
Project Name	Project Goal	Project Description	Promising or Evidence based include source	Target Group	Project Length	Partners
Trauma Nurses Talk Tough	Education to improve safe driving practices to teens/parents and reduce teen crash rates in VA participating counties	TNTT ppt delivered during course time to receive DL	Evidenced Based <i>Journal of Trauma Nursing</i> - July/September 2008, Volume :15 Number 3 , page 102 - 111	Teens and parents	Ongoing. Multiple times per year	Virginia Court system, TN school systems, city employees
Pedal Carts	Reduce distracted driving and DUI rates	Utilize pedal carts and DUI goggles to demonstrate effect upon driving	Promising https://www.sadd.org/what-we-care-about/traffic-safety/teens-distracted-driving/ https://www.sadd.org/who-we-are/our-approach/ https://www.cdc.gov/motorvehiclesafety/seatbelts/facts.html	All ages, teens	6X per year ongoing	Kingsport and Sullivan County PD. Level 1 Trauma Service
Driver Simulator	Reduce distracted driving and DUI rates	Utilize pedal carts and DUI goggles to demonstrate effect upon driving	Evidenced Based https://www.cdc.gov/vitalsigns/motor-vehicle-safety/index.html https://www.cdc.gov/motorvehiclesafety/seatbelts/facts.html	All ages, teens	1-2X per year ongoing	Kingsport and Sullivan County PD, Level 1 Trauma Service
Battle of the Belts	Improve seat belt use in teen population	Competition between TN high schools to include seatbelt checks and education	Evidenced Based https://www.cdc.gov/vitalsigns/seatbeltuse/index.html https://www.cdc.gov/motorvehiclesafety/seatbelts/facts.html	Teens	Annually each School year. Per state IP committee planning	Hawkins County, Level 1 Trauma Service
Prom Promise	Simulate MVC with teens during prom event	Re-enact a MVC with teens critically injured and fatally injured	Promising https://www.sadd.org/who-we-are/our-history/ https://www.sadd.org/who-we-are/our-approach/ https://www.cdc.gov/motorvehiclesafety/seatbelts/facts.html	Teens	Ongoing annually. 2-4 schools	Sullivan County EMS, Flight service, local FD and rescue, Level 1 Trauma Service
Accident Avoidance	Reduce TN crashes	Driving skills hands on workshop	Evidenced based https://www.cdc.gov/vitalsigns/motor-vehicle-safety/index.html	Teens	8 hour, 1 day annually	Bristol Raceway, Trauma Services
Rollover simulator , seatbelt convincer	Improve Seatbelt use	TN Hgy Patrol Injury Prevention program. Simulators	Promising https://www.sadd.org/what-we-care-about/traffic-safety/seat-belts/ https://www.cdc.gov/motorvehiclesafety/seatbelts/facts.html https://www.tn.gov/safety/news/46949	Teens	1-2 X annually	Area schools, Level 1 Trauma Service

AARP Smart Driver course	Refresher of driving skills and laws	Safe driving courses for elderly	Evidenced based https://www.cdc.gov/vitalsigns/motor-vehicle-safety/index.html	Elderly	Quarterly, ongoing	AARP, Level 1 Trauma Service
Child Passenger Seat Checks	Child Passenger seat checks	Coordinate with Kingsport FD for car seat checks and education	Evidenced Based https://www.cdc.gov/Motorvehiclesafety/Child_Passenger_Safety/index.html https://www.cdc.gov/motorvehiclesafety/seatbelts/facts.html https://www.tn.gov/safety/news/46949	Parents and infant/sm all child	Ongoing 3-4X per year	Kingsport FD, Sullivan County PD, Level 1 trauma Service
School Bus Driving Safety	Monitor current driving methods and safety hazards of county bus routes	PD ride along with buses as well as driving escort to identify traffic related offenses	Promising https://safety.fhwa.dot.gov/hsip/reports/pdf/2016/tn.pdf	School aged youth	Ongoing and variable	Sullivan CO Sheriff
Sullivan County Study	Reduce number of traffic crashes at intersections	Review of red light cameras and data of which intersections had highest volume of crashes	Promising https://safety.fhwa.dot.gov/hsip/reports/pdf/2016/tn.pdf	All ages	Ongoing	Sullivan County and Kingsport PD
Seatbelt Screening	Improve percentage of seatbelt use	Sullivan Co PD monitoring number of drivers with Seatbelt use. Incorporating in current safety initiatives and state grant programs	Evidenced based https://www.cdc.gov/vitalsigns/seatbeltuse/index.html https://www.cdc.gov/motorvehiclesafety/seatbelts/facts.html https://www.tn.gov/safety/news/46949	All ages	Ongoing	Sullivan Co Sheriff and Level 1 Trauma Center

Injury Area #3 Substance Abuse						
Project Name	Project Goal	Project Description	Promising or Evidence based include source	Target Group	Project Length	Partners
Count it, Lock it, Drop it	Reduce fatalities and ED visits from drug overuse	Education for community to inventory and secure medications	Evidenced Based https://www.cdc.gov/vitalsigns/painkilleroverdoses/index.html	All	ongoing	Sullivan County PD, Health Dept
Sullivan County Antidrug Coalition	Community coalition for reducing drug abuse		Promising https://www.cdc.gov/vitalsigns/painkilleroverdoses/index.html	All	ongoing	Sullivan County agencies

Injury Area #5 Violence and Suicide						
Project Name	Project Goal	Project Description	Promising or Evidence based include source	Target Group	Project Length	Partners
Active Shooter Training	Training for community and agencies for active shooter events	Lecture, small group discussions and breakout sessions, scenarios	Evidenced based https://www.alicetrain.org.com/	All	Ongoing 4 X per year	Washington County SWAT, Kingsport PD
Stop the Bleed Campaign	Bleeding control of injured	Training for tourniquet application, wound packing, stabilization of the injured	Evidenced based http://www.bleedingcontrol.org/about-bc/hartford-consensus/compendium	Community wide	Ongoing 4-6 X per year	Kingsport and Sullivan County PD, FD, EMS, Schools, Level 1 Trauma Service
Community Watch Program	Reduction in criminal activity	Police led education, ppt to include methods of monitoring and communicating to police with criminal activity	Evidenced based Trevor Bennett, Katy Holloway, and David P. Farrington, "Does Neighborhood Watch Reduce Crime: A Systematic Review and Meta-Analysis," <i>Journal of Experimental Criminology</i> (2006), Vol. 2, pp. 437-458.	Community	Ongoing. 1-2X per year	Kingsport PD
Count it, lock it drop it	Reduce fatalities drug overuse	Education for community to inventory and secure medications	Promising https://www.cdc.gov/vitalsigns/painkilleroverdoses/index.html	All	Ongoing	Sullivan County Law Enforcement, Health Dept., Hospitals
211 Community Resource Center	Easily accessible number for the county to obtain resources available for any physical, mental or health related need	Utilize a standard process for obtaining resources available in the community similar to that of the 911 system	Promising	All community residents	Ongoing	Sullivan Co and Kingsport city administration

Injury Area #6 Emergency Preparedness						
Project Name	Project Goal	Project Description	Promising or Evidence based include source	Target Group	Project Length	Partners
Emergency Go Bag and Terminology	Emergency preparedness for youth	Education of terminology, communication	Promising https://www.cdc.gov/features/disaster-planning-parents/index.html	Youth and parents	Ongoing 1-2 X per year	Homeland Security, Sullivan Co Schools
District HazMat Team-Kingsport FD	Certified Hazmat team for region	KFD Fire Department lead agency for Hazmat team	Promising https://www.jointcommission.org/assets/1/18/planning_guide.pdf	All communities	Ongoing	KFD, City Administration
USAR District 1 Team	Respond to local and regional disaster or complex scenes	Type 3 (27 members) team to respond per TEMA/FEMA guidelines	Promising https://www.jointcommission.org/assets/1/18/planning_guide.pdf	All Communities	Ongoing	KFD, JCFD, BFD, Sullivan County EMS, Washington CO EMS, Level 1 Trauma Center
Fire Prevention	Reduce number of burn injuries, improve fire prevention	Fire prevention education to the schools and community	Evidenced based Fire death and injury rates (2005-2014) XLSX 81 KB https://www.usfa.fema.gov/data/statistics/order_download_data.html#download https://www.cdc.gov/features/disaster-planning-parents/index.html	Youth, community wide	Variable and lead by Kingsport FD. Multiple during Fire Prevention month	KFD, Level 1 Trauma Center
Law Enforcement/SWAT Partnerships	Improve medical coverage and on scene response with incidents	Partnerships with local SWAT teams to assist with training, equipment and scene response	Promising http://www.nationalacademies.org/hmd/-/media/Files/Report%20Files/2016/Trauma-Care/Trauma-Care-Effectiveness of Tactical Emergency Medical Support: A Systematic Review* Michael J. Feldman ¹ , MD, PhD, FRCPC, Brian Schwartz ² , MD, CCFP-EM, Laurie J Morrison ³ , MD,	Law enforcement and violent crime victims	Ongoing	Washington Co SWAT, Kingsport PD and SWAT, Hawkins Co SWAT, Walter State Community College, Level 1 Trauma Center

			FRCPC			
Trauma Field Teams development	Improve medical coverage and on scene response with incidents	Partnerships with local Rescue team to assist with training, equipment and scene response	Promising http://www.nationalacademies.org/hmd/~media/Files/Report%20Files/2016/Trauma-Care/Trauma-Care-Recs.pdf	Complex , and extended rescue scene victims	Ongoing	KFD and Rescue, EMS and Level 1 Trauma Center

4. Evaluation Methods

Activities	Outcomes	Length	Indicators	Method	Result
What did you do Or will you	What does success look like	Short , intermediate and long term	What did or will you measure	How did you (or will you) measure it	What did you find (if applicable)
Examples					
Stepping On, Remembering When, Maple Oaks Community Programs	Reduced # of ED visits and admissions from falls. Increased participation in events	Long term	Monitor TQIP, State and Level 1 hospital registry data	Quarterly, annually Trauma Registry reports	Improvement between 2012 to 2014 but a return of increased numbers 2015.
All Traffic Programs	Reduced number of total number crashes, reduced age group specific crashes and reduced fatalities.	Short term, long term	Monitor monthly and annually data from Law Enforcement agencies, Trauma registry data	Quarterly, annually Trauma Registry reports, Law enforcement records	Data staying relatively the same. Not a lot of improvement but maintaining
Active Shooter Training	Prevent work place violence, Reduced number of employee injuries , increased number of work days	Short and Long term	Number of ED visits from work related injuries, business tracking number of injuries	Individual Business employee records, Hospital employee health tracking injuries on the job	BAE systems noted reduced number of employee injuries
Stop The Bleed	Increase use of tourniquets and homeostasis agents for life threatening injuries with uncontrolled bleeding	Short and long term	Trauma registry data to obtain when equipment used	Quarterly and annually	Previously only used per EMS and flight service.
Field Team and Pre Hospital partnerships	Increased communication between pre and acute care providers, increased training opportunities, field team responds	Short and long term	Review any events where requested, log number of training events offered	Measured by amount of training opportunities and field response	Prior to programs field teams did not have medical director or expanded protocols in place.

	when requested				
211 Resource Center	Reduction in suicide attempts and fatalities, reduction in violent crimes and fatalities	Long term	Numbers of suicide and violent related ed /hospital admissions, Law enforcement records	Monitor EPIC , Trauma Registry, Law Enforcement and Health Department records quarterly	Reduction in numbers of incidents and variable fatalities
Remembering When, Sparky Smoke Alarm program, emergency preparedness education Fire Prevention	Community wide awareness of emergency information, communities, readiness for events. Reduction in associated injuries/fatalities as possible	Short and long term	Work with EMA to determine final reporting of emergencies. Specific weather related trauma admissions to the trauma centers.	Trauma registry and EMA reports	N/a

Section 4: Community Inventory of Safety and Injury Initiatives

Traffic Safety

Name of initiative	Target Group
Trauma Nurses Talk Tough	Teenagers
Pedal Carts and DUI/DD	All Drivers
Drivers Simulator	Teenagers, Middle School
Battle of the Belts	Teenagers
Prom Promise	Teenagers
Accident Avoidance Workshop	All ages
Senior Car Fit	Seniors
Red Light Study	All Ages
Seat Belt Surveillance	All Ages
Driving Rollover simulator	All Ages
Seatbelt Convincer	All Ages
AARP Driving Smart Driving Course	Seniors
Carseat Safety Checks	Parents and Small children

Falls

Name of initiative	Target Group
Stepping on	Seniors
Remember When	Seniors
HOSA Fall Project	All Ages
Maple Oaks Community Coalition	All Ages
Holston Valley Parish Nurse Program	Seniors

Substance Abuse/Misuse

Name of Initiative	Target Group
Sullivan County Drug Coalition	All Ages
211 Sullivan County	All Ages
Count it , Lock it, Drop it	All ages with medication use
Multiple Recovery and Counseling programs	All ages effected by drug addiction/dependence
Alcohol Anonymous	ETOH dependent/addiction

Workplace Safety

Name of initiative	Target Group
Eastman and Kingsport PD Emergency Planning Workgroup	All employees of both agencies to improve active shooter response times and preparedness
Stop the Bleed Campaign	All employees, students, residents involved with training
Safety Seminar	All Industry, Businesses
Take 2	Eastman employees
All in for Safety	BAE employees
Wellmont Health System Emergency and Safety programs	All employees, visitors and patient safety
Tri Cities Airport Security	Airport Employees and Passengers

Violence and Suicide Prevention

Name of initiative	Target Group
Active Shooter Training	All ages, schools , business
Stop the Bleed Campaign	Promoting training to prevent preventable death from uncontrolled bleeding
Community Watch Program	All residents
TN 211 Sullivan County chapter	All residents
Alcohol Anonymous	ETOH dependency/addiction
Recovery /Counseling	Drug dependency /addiction

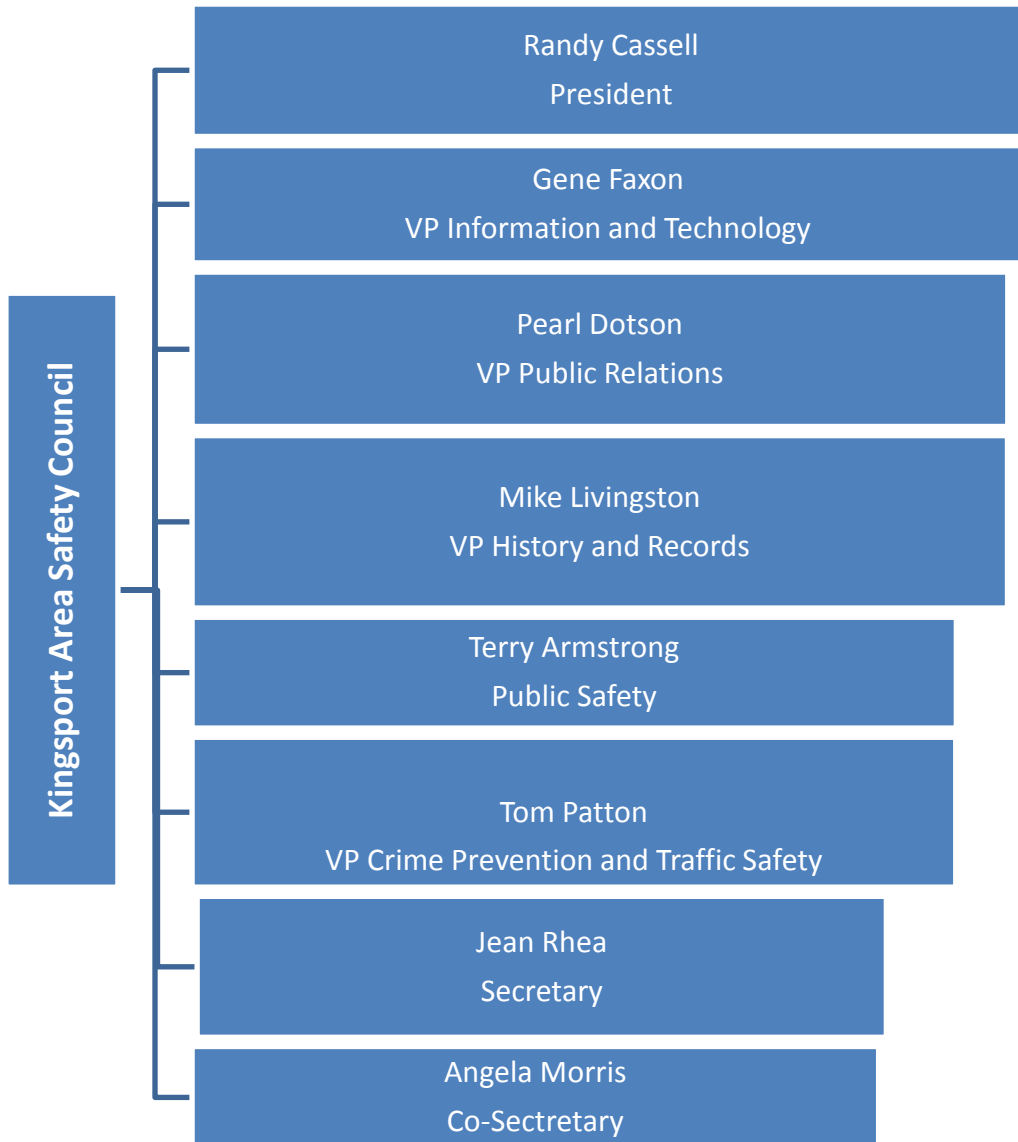
Emergency Preparedness

Name of initiative	Target Group
Emergency Go Bag and Communication	All ages
Incident Command and Pre Hospital Structure	HOSA, Health Science, older youth School programs
Kingsport HazMat Team	Regional Community
District 1 USAR Team	Regional Community
Kingsport Rescue	Regional Community
Sullivan County Health Dept. Community Preparedness	Sullivan County Community
ETSU Disaster Response Training	East TN State University Emergency and Disaster Response Management Minor Program
ETSU Public Health /Valleybrook	Training site for Trauma Center programs, USAR team, regional EMS and Law Enforcement
SWAT teams	Complex Tactical response
Level 1 Trauma Center Field Team Development	Assist USAR, Kingsport Rescue and local SWAT teams for complex rescue, tactical scenes

Appendix A

See attached PDF file.

Appendix B



2016 Officers

President – Randy Cassell, Eastman

Secretary - Jean Rhea, ETSU

Co-Secretary - Angela Morris, American Red Cross

VP Home & School - Brenda Lowder, Eastman

VP Construction, Seminar Chair – Dana Taylor, Eastman

VP Information & Technology – Gene Faxon, BAE

VP Industrial, Seminar Co-Chair – Mark Spencer, Brock

VP History & Records – Mike Livingston, Tele-Optics

VP Public Relations – Pearl Dotson, Eastman, Retired

VP Public Safety – Terry Armstrong, BAE

VP Crime Prevention & Traffic Safety – Tom Patton, Kingsport Police Department

2016 Directors

Dan Matherly, Brock

Danielle Hill, BAE

Dusty Parsons, Domtar

Jim Perkins, Wellmont

Mark Vaughan, Grainger

Mike Love, Eastman

Tony Armstrong, BAE

2017 Directors

Angela Vicars, Charter

Ginger Mowdy, J. Mark Bowery Insurance

Joel Jones, Kingsport Fire Department

Mary Misciagna, TOSHA

Sharon Littleton, Wellmont

Tom Baker, Eastman

Appendix C

See attached PDF

Appendix D

Board of Directors Meeting April 9, 2014 Contractor Training Center Kingsport, Tennessee

President Dan Matherly called the meeting to order. Prayer by Randy Cassell.

Attendees: Dan Matherly, Tommy Hughes, Mark Spencer, Jean Rhea, Randy Cassell, Gene Faxon, Mary Miscianga, Sharon Littleton.

OLD BUSINESS:

Seminar Planning Meeting – Dan and Mark picked up drinks. Send up-date to speakers – Mark and Gene Faxon will take care of. Brenda will need update on number of attendees about a week prior with number of vegetarian lunches for Southern Foods for catering purposes – Jean Rhea will provide that. Speaker gift will be battery pack.

Linking to Twitter – Tommy Hughes is going to check on this with his wife.

NEW BUSINESS:

Safe Community Award - Path forward – Committee formed – Ray submitted update – gathering information. Will work with other members to gather information to submit.

Accident Avoidance Workshops - The topic was brought up that we need to discuss further on how we are going to support these workshops. We will support 2 in Spring and 2 in Fall course.

KASC Shirts – Do we need to place order? Jean Rhea will send out email to distribution list.

April 22 Community Awareness Meeting – Brian Ramsey, Eastman Firehall is speaker. Need speakers July through rest of year. Let Dan know of anyone interested.

May 13 Kid's Safety Fair – Volunteers accepted – items for treat bags needed/accepted. Approximately 450 kids – To be held in Building 310 Eastman. Will stuff treat bags on Monday – Jean Rhea will send out email to distribution list requesting volunteers to help.

May 14 Kingsport Annual Safety Seminar – Volunteers needed!

President Matherly thanked all members for their participation and adjourned the meeting at 12:32.

Minutes respectively submitted,
Jean Rhea, Secretary
Kingsport Area Safety Council

Minutes approved,
Kingsport Area Safety Council

Board of Directors Meeting
May 8, 2014
Contractor Training Center
Kingsport, Tennessee

President Dan Matherly called the meeting to order. Prayer by Tom Patton.

Attendees: Dan Matherly, Mark Spencer, Jean Rhea, Randy Cassell, Gene Faxon, Mary Miscianga, Sharon Littleton.

OLD BUSINESS:

Seminar – Everything is good to go for seminar next week – know everyone is tying up loose ends for this and appreciate all the hard work gone into making this another successful year. Thanks for taking time out to touch base for any business needing addressing.

Linking to Twitter – Tommy Hughes is out today – will address next meeting.

NEW BUSINESS:

Safe Community Award - Path forward – Committee formed – Ray submitted update – gathering information. Will work with other members to gather information to submit by first of June.

KASC Shirts – Order placed should have shirts this week.

April 22 Community Awareness Meeting – No May meeting – June is Jim Perry from Sullivan County EMS Director. Need speakers July through rest of year. Let Dan know of anyone interested.

May 13 Kid’s Safety Fair – Volunteers accepted – items for treat bags needed/accepted. Approximately 450 kids – To be held in Building 310 Eastman. Will stuff treat bags on Monday – Jean Rhea will send out email to distribution list requesting volunteers to help.

May 14 Kingsport Annual Safety Seminar – Volunteers needed!

President Matherly thanked all members for their participation and adjourned the meeting at 12:15.

Minutes respectively submitted,
Jean Rhea, Secretary
Kingsport Area Safety Council

Minutes approved,
Kingsport Area Safety Council

Kingsport Area Safety Council
Board Meeting – August 14, 2014

Meeting held at Eastman Safety Training Ctr. Bldg. 505

Attendees: Gene Faxon, Mike Livingston, Dan Matherly, Sharon Littleton, Jean Rhea, Tommy Hughes, Angela Morris, Mary Misciagna, Angel Vicars, Joel Jones.

Meeting began with prayer by Mike Livingston at 11:35 am.

Old Business:

Safe Community Award: The meeting is currently being attended by Randy Cassell, Ray Heim and Dr. Testerman. Randy Cassell will update at the next Board meeting.

New Business:

Accident Avoidance Workshop: Tommy Hughes has one person interested as does Mary Misciagna. Gene Faxon requested they email him the information.

Culture of Health Application – Sharon Littleton presented some information on this, but felt it was a lot similar to the Safe Communities Award. After some discussion, decided to take a further look at possibility for next year.

Mental Health First Aid Course – Jean Rhea stated that after the presentation Ron Morton gave at the July Community Safety Awareness meeting, she had been asked about a full course in Kingsport. The earliest ETSU was able to get dates were October 14, 16 or November 4th, 2014. Just looking at convenient location to hold the one day workshop. Maximum number accepted is 30 with registration fee of \$75.00. Sharon Littleton will check on Wellmont facilities.

Update: Wellmont facilities not feasible due to parking situation.

Halloween Treat Bags – Need to start planning for the stuffing and recruiting donations of candy. **Stuffing will be on October 22nd**. at the Contractor Training Facility. SAME PLACE AS LAST YEAR. Dan and Angel is working with JA regarding giving out treat bags to schools. No mall giveaways this year.

August Community Awareness meeting is August 19, with Dr. Ladley, Wellmont presenting if there is not a conflict with his scheduling. Topic will be Calcium Scoring for Cardio Vascular Disease.

Meeting adjourned at 12:25pm

Minutes taken/submitted by: Jean Rhea

Board of Directors Meeting
October 8, 2015
Contractor Training Center
Kingsport, Tennessee

President Dan Matherly called the meeting to order in the absence of incoming President Randy Cassell. Prayer by Gene Faxon.

Attendees: Dan Matherly, Suzie Speaks, Angela Morris, Sharon Littleton, Angel Vicars, Pearl Dotson, Brenda Lowder, Jean Rhea, Joel Jones, Gene Faxon, Bruce Lyttle.

BUSINESS:

Welcome New Members – Dan welcomed the new Board Members, Suzie Speaks, Ray Heim, Bruce Lyttle and Danielle Hill. At the time, Suzie Speaks was the only one in attendance.

Safe Communities Drug Awareness Meeting Update – Ray Heim – Sharon Littleton updated up on that since Ray was teaching and unable to attend. Ray has sent out a flyer earlier that day to be sent to the distribution list and post on Facebook and be posted on the Webpage. Dan asked if he could possibly do a better write-up on that before it being posted and sent. Sharon was going to ask him to do that. This will be from Noon – 2:00 and replace our monthly Community Safety Awareness meeting.

KASC/ETSU MOU – We now have a Memo of Understanding between the two organizations as to exactly what will occur during the seminar and throughout the year. Vendors will need to pay by check. Need to get with Terry Armstron on that aspect.

Historical Records from Jack Alvis – Gene Faxon was informed by Carol (Jack’s wife) that Jack has probably the first check that was ever written by the Kingsport Area Safety Council and a copy of the first minutes. Gene will go over there today and get a truckload of the boxes and take to trailer and asses the amount of material to be moved. Jack is in Wexford House, Room 208 and LOVES company. You will have to tell him who you are, but he would love visitors.

Halloween Treat Bags – Bags are here and we will do the stuffing on October 27th at 3:30. Jean will send out the email and include the request for candy. Nothing that kids can choke on please!!

Accident Avoidance Workshop - Gene Faxon updated us on this. If a Council member has someone that they would like to attend, they need to email Gene to request a space in the upcoming workshops. This will streamline these requests.

November Community Safety Awareness Meeting – That is Eastman sponsored and held at Eastman Lodge. It is also our annual Second Harvest Food Drive. We request

**Board of Directors Meeting
March 10, 2016
Contractor Training Center
Kingsport, Tennessee**

President Randy Cassell called the meeting to order.

Prayer by Mike Livingston.

Attendees: Tommy Hughes, Mark Spencer, Brenda Lowder, Pearl Dotson, Angel Vicars, Angela Morris, Michael Love, Joel Jones, Tom Patton, Bruce Lyttle, Mike Livingston, Randy Cassell, Jean Rhea, Ray Heim.

OLD BUSINESS:

Approve Minutes of January and February 2016 Meetings – Gave everyone an opportunity to read over both sets of minutes. January minutes – one typo – at the bottom at 2016 Meetings Scheduled – Board is misspelled – otherwise approved – motion made to approve by Bruce Lyttle, seconded by Angel Vicars, motion carried. February minutes – motion made to approve made by Mike Livingston, seconded by Bruce Lyttle, motion carried.

2016 Safety Seminar Update – Mark Spencer – Brochure is out to board members and has been sent to the printers. The Kingsport Police Department will not be able to do the Color Guard. Possibly Dobyns-Bennett. Mark Spencer will check and let Jean know so she can update the brochure before printing. Have decided on speaker gift and have been confirmed with Food City on catering. Jean will send brochure out to others first of the week.

Junior Godsey Feedback – The attached pictures are from the Butler Volunteer Fire Department. They received the Junior Godsey Grant last year. They sent a letter along with the pictures letting us know how the money was put to us refurbishing their kitchen and restroom areas and to purchase cookware.

Kid's Safety Fair – Mike Livingston updated us on the event – Tuesday, May 10, 2016 – Need help, especially during lunch time. This event would not happen without the funds the council donates. Bass Pro does not know what they would be able to do – gets their calendar from corporate one-month prior per Angel Vicars. Mike stated they are expanding outdoor demos this year and they have several new members in the Partnership.

Fire Safety Rodeo – We have been presented with an opportunity to partner with the Civitan on an event during the Fun Fest called Trike Trials. It will be on July 23rd at DB parking lot, right after balloon race. Need to send \$100.00 upfront for event. Civitan did not have the volunteer or resources and were going to drop the event. Will meet with

**Board of Directors Meeting
April 14, 2016
Contractor Training Center
Kingsport, Tennessee**

Dan Matherly called the meeting to order.

Prayer by Mike Livingston.

Attendees: Angel Vicars, Tommy Hughes, Mark Spencer, Dan Matherly, Sharon Littleton, Angela Morris, Mike Livingston, Jean Rhea, Brenda Lowder and Pearl Dotson

OLD BUSINESS:

Approve Minutes March Meeting – Gave everyone an opportunity to read over minutes – one correction – Sharon Littleton was in attendance, but not listed. Approved otherwise.

2016 Safety Seminar Update – Mark Spencer –Everything is good to go – have a seminar planning meeting this afternoon to go over details.

Junior Godsey Feedback – No information.

Kid's Safety Fair – Mike Livingston updated us on the event – Tuesday, May 10, 2016 – All systems are go – have pens, pencils and notepads donated. One school that signed up won't be able to attend as they are limited to only two field trips per year and this would make their third one. Will be inviting Gray Elementary. Gray Fossil Site won't be participating this year due to staffing difficulties.

New Event Replacing Fire Safety Rodeo – This event will be held right after the balloon race in front of Civic Auditorium. Will still have the Battle of the Ball, Bucket Brigade and some of the events for the kids.

June Meeting/Picnic - June 21, 2016 – 10:00 – 2:00 – Borden Park – All is set – need to work on menu – have main shelter, both inside and out to have access to restrooms and kitchen. Check on catering – Jean Rhea will get quotes from Firehouse Barbeque for 100-150 people. We will have them RSVP. Definitely want to invite Rick Osborn and Darla Dye to the event.

Community Awareness Speaker Committee – Dan hasn't had time to schedule a meeting, plus Mark has had the room booked – Sullivan County Drug Coalition possible speaker and Appalachian Miles for Smiles.

**Board of Directors Meeting
June 9, 2016
Contractor Training Center
Kingsport, Tennessee**

President Randy Cassell called the meeting to order.

Prayer by Gene Faxon.

Attendees: Susie Speaks, Randy Cassell, Mark Spencer, Dan Matherly, Mike Livingston, Angela Morris, Angel Vicars, Ray Heim, Sharon Littleton, Mary Misciagna, Gene Faxon, Brenda Lowder, Pearl Dotson, Jean Rhea.

OLD BUSINESS:

Approve Minutes March Meeting – Gave everyone an opportunity to read over minutes – one correction – Ray Heim was in attendance, but not listed. Dan Matherly made motion, Angela Morris seconded, Approved otherwise.

2016 Safety Seminar Update – Mark Spencer – Good seminar – Had rain in the morning, a little difficulty in moving tables inside, but everything worked out really well. A little short on volunteers in the morning.

Randy recognized the job Mark for stepping up and taking charge and running the seminar this year.

Kid's Safety Fair – Mike Livingston updated us on the event – One school cancelled 2 days prior to the event – this makes the second year in a row they have done this – won't be invited back. Have discussed moving date to fall, but with TCAP and exams will leave the way it is in May. Building 310 likes them back-to-back. Partnership is making donation to Hardee's for Stars for Troops. Council also made donation last year and suggestion was made to do so this year. Money helps build homes and provide scholarships for kids whose parents have died in service. Kingsport Hardees is #3 in the world – Pearl Dotson made motion to donate. No action taken. Mary Misciagna made motion we match donation from last year. Gene Faxon seconded. Motion carried.

New Event Replacing Fire Safety Rodeo (Fun Fest Event)– This event will be held right after the balloon race in front of Civic Auditorium. Will still have the Battle of the Ball, Bucket Brigade and some of the events for the kids. Civitan Club will need assistance putting helmets on kids. Would like for Ray Heim to bring the cars and drunk goggles. Ray won't be able to attend, but will make those available. Will see if Tom Patton, KPD will be available. Will have give-aways from KASC.

Accident Avoidance – One/two attend for spring. Have one coming up in the fall.

Kingsport Area Safety Council Board Meeting

July 14, 2016

In Attendance: Randy Cassell, Tom Patton, Tommy Hughes, Mike Livingston, Gene Faxon, Dan Matherly, Angela Morris.

Randy Cassell called the meeting to order. Gene Faxon led the meeting in prayer.

Move to accept June meeting minutes with the following corrections by Gene Faxon:

- Add that the smoke alarms for Habitat houses have been delivered,
- add DUI cars to the kid's event at Fun Fest on July 23rd
- make sure to note The Bucket Brigade and the Battle of the Ball at Fun Fest is for kids

2nd by Mike Livingston. All in favor.

Safety Seminar Update/MOU with ETSU: Randy stated the Eastman Employee Center appreciation breakfast on June 23rd was a success and all expressed their thanks. David Strickler specifically thanked the Council for what we do and stated how pleased Eastman is to be a part of the seminar.

Randy confirms the Eastman Employee Center is booked for next year's Kid's Safety Day and the Safety Seminar.

The Board has not received the check from ETSU for the seminar. The MOU states that the Council will receive a check within 60 days and that time frame has passed. That issue to be addressed when Board members talk with ETSU to renew the MOU.

Fun Fest Event replacing the Fire Safety Rodeo update by Gene Faxon: It was listed in the Fun Fest brochure as "Kid's Rodeo". Start time will depend on Balloon lift-off. Volunteers are needed and Gene will have Jean send out a reminder next week. Tom Patton will be in charge of the DUI cars.

Borden Park picnic update: Good Turn-out. Everyone seemed to have a good time.

Safe Community update: Dan, Tom, Randy and Gene met with the city's Marketing Department about using the safe community designation on their website and on city signs for advertising and business recruitment purposes. The plan also includes reaching out to the Northeast TN Association of Realtors and the creation of a safety of Kingsport video with Cumberland Marketing. Tom pointed out that the safe community designation doesn't mean Kingsport has no crime or problems just that 1. Possible risks are recognized and a plan is in place to deal with those 2. Steps are taken to minimize those risks. Randy and Ray will be attending the conference Aug 8-9.

Mike updated us on the Halloween Treat bags: It has been decided to purchase the bags through Empire Label: the bags are similar, but the cost is \$.59 per bag with no added shipping

**Board of Directors Meeting
October 13, 2016
Contractor Training Center
Kingsport, Tennessee**

President Randy Cassell called the meeting to order.

Prayer by Mike Livingston.

Attendees: Sharon Littleton, Ray Heim, Gene Faxon, Suzie Speaks, Mike Livingston, Barry Brickey, Randy Cassell, Jean Rhea, Mark Spencer, Dan Matherly, Bruce Lyttle, Joel Jones.

Outstanding Service Award Presentation – Presented Bruce Lyttle with plaque (which was not ready at the banquet). He has really worked hard during his time with the Council and deserves this honor.

OLD BUSINESS:

Minutes September Meeting – Deferred approval to later date – did not have minutes.

Halloween Treat Bags – Mike Livingston has those in his office and will get those to the Contractor Training Building for the bag stuffing. He will more than likely be in Virginia. Company we normally buy from will no longer carry those after this year, so it's a good thing Mike went ahead and ordered from Empire Label. Aaron Parker, Northern will donate boxes to put the stuffed bags in. Dan Matherly will coordinate with JA on the schools/numbers for each. Will hold back bags for Safety Council requests after schools are filled. Jean Rhea will send out emails requesting candy and helpers separately and along with the Community Safety Awareness Meeting notice. If Pearl is not able to purchase candy, Gene Faxon volunteered to do so.

2016 Safety Seminar – Mark has first meeting scheduled to get started on the 2017 Seminar for Thursday, October 20, 2016. He has sent out the invitation via calendar but may have left some off, so if you are interested in being involved/participating in the planning, please attend.

MOU with ETSU – Mark is hoping to get the majority of this done via email. Jean will check on what is needed to get the money deposited directly instead of a check written and relay that to Mark to be included in the MOU.

Accident Avoidance – Have one person for the Fall workshop which is full. Homer has increased the cost from \$250 to \$307 per person for the workshop. Should still be able to sponsor the same number of people as previously. Jean would like one spot for Spring for her granddaughter.



Seat Belt and Safe Sports School Programs
Hawkins Co. EMS, PD, City Council, THP,
Holston Valley Medical Center Trauma
Service

On Saturday, July 23, KASC presented several events for the Kingsport Fun Fest. We partnered with the Kingsport Civitan Club to provide Trike Trial for different age groups. We also provided a Battle of the Ball water event for children and the young at heart. A mini Bucket Brigade was conducted to remember how fire fighters originally extinguished fire. Tom Patton and Dustin Jackson with KPD along with several KASC supporters provided a Drunk Driving Simulation Course to promote safe driving awareness. Thanks to all who came out to support these events



Trike Trials

The races will start at 8:30 AM on July 23, 2015(Saturday)
 (We will start with the two and three year old children first)
Location: 1599 Fort Henry Drive parking lot (across from the Civic Auditorium)

In case of rain– We will be in the entry way between Belks & Penneys in the Town Center (Ft. Henry Mall)

Awards: A prize will be awarded to ALL participants!

Ages: 2 through 99 We will start with the 2 & 3 year olds, then 4 & 5 year olds, and on up to 99

All participants will ride a child's tricycle on a small course against another participant of their same age.
Helmets and tricycles will be provided. (You can bring your own helmets)

PLEASE BRING THIS FORM WITH YOU WHEN YOU COME.

Waiver Agreement 2016 Trike Trials

All entrants will assume all risk of injury or loss of life and loss of damage to property arising from participation in the "Trike Trials" and shall release all sponsoring and participating individuals and organizations from liability.

PLEASE FILL OUT THE FOLLOWING:

 (Print name of child)

 (Parent's or guardian's signature)

Child's Age _____ Telephone Number _____



Please bring this form with you when you come to the Trike Trials.
 We will also have forms available at the event but it will help us if you bring this form filled out.

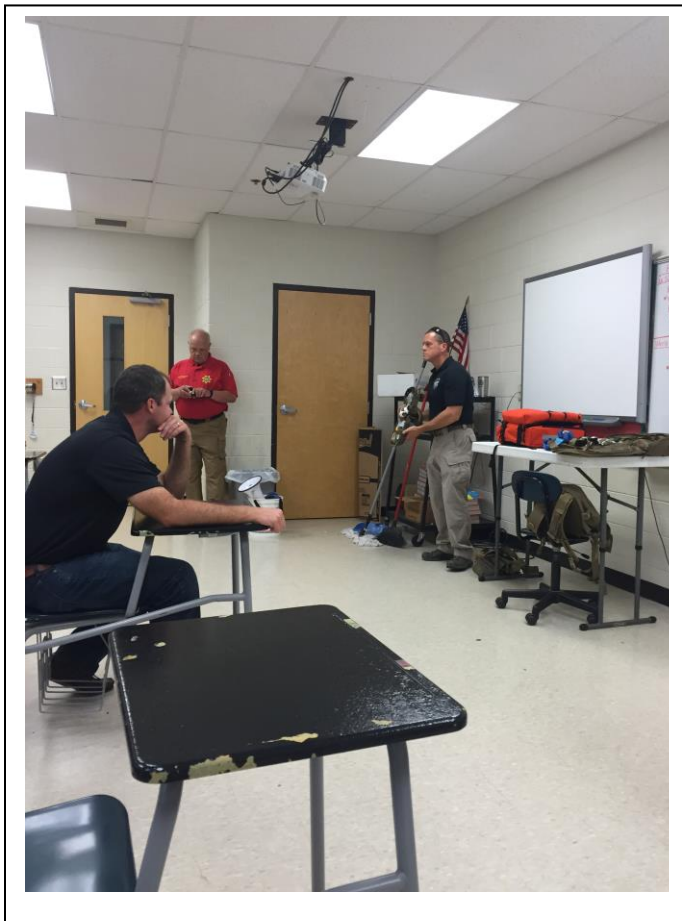
SPONSORED BY: KINGSPORT CIVITAN CLUB (NOON CLUB) , REXEL & KINGSPORT AREA SAFETY COUNCIL
WE LOOK FORWARD TO SEEING YOU THERE!



Emergency Planning /Incident Command

Local High School, EMS, EMA, Holston Valley
Medical Center Trauma Service



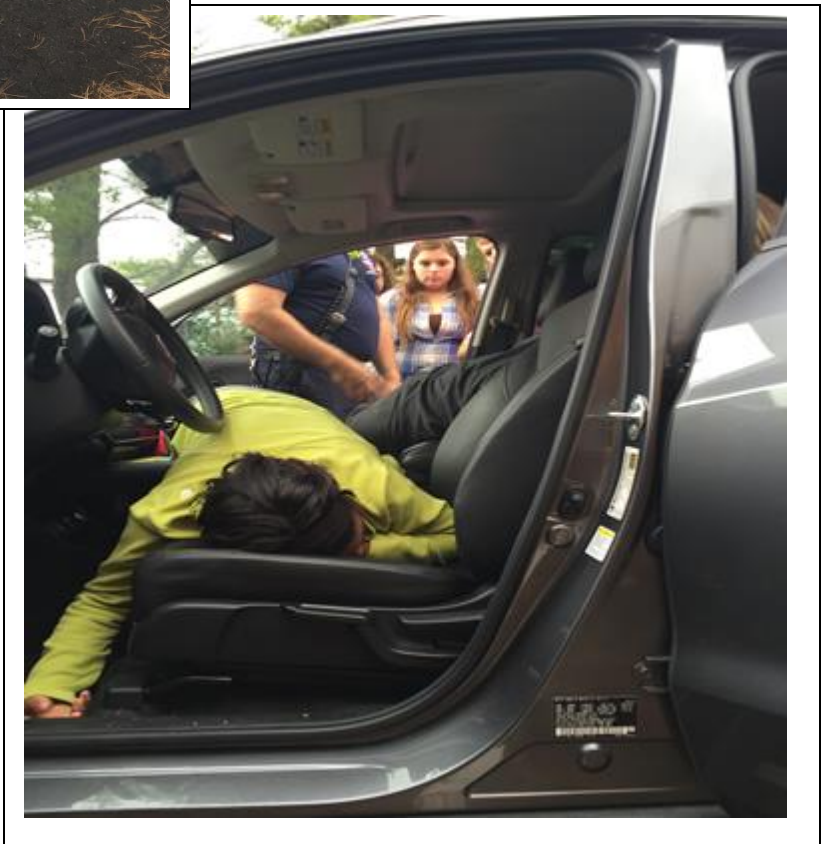


Active Shooter and Stop the Bleed
Training
Area SWAT team and Holston Valley
Medical Center Trauma Service



DUI and Distracted Driving

Dobbyn's Bennett High School and
Holston Valley Medical Center
Trauma Service



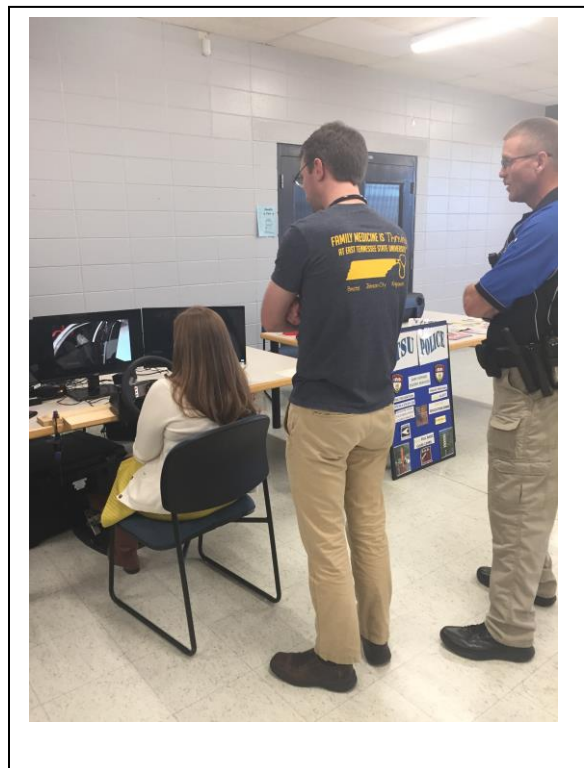


Distracted Driving Programs
Hawkins County HOSA and Holston Valley Medical Center Trauma Service



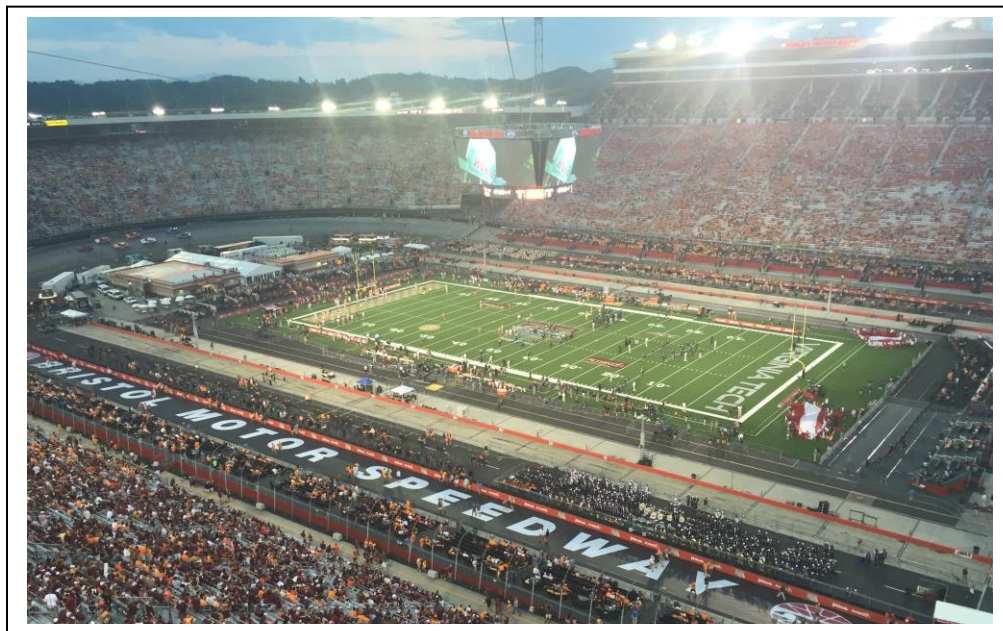
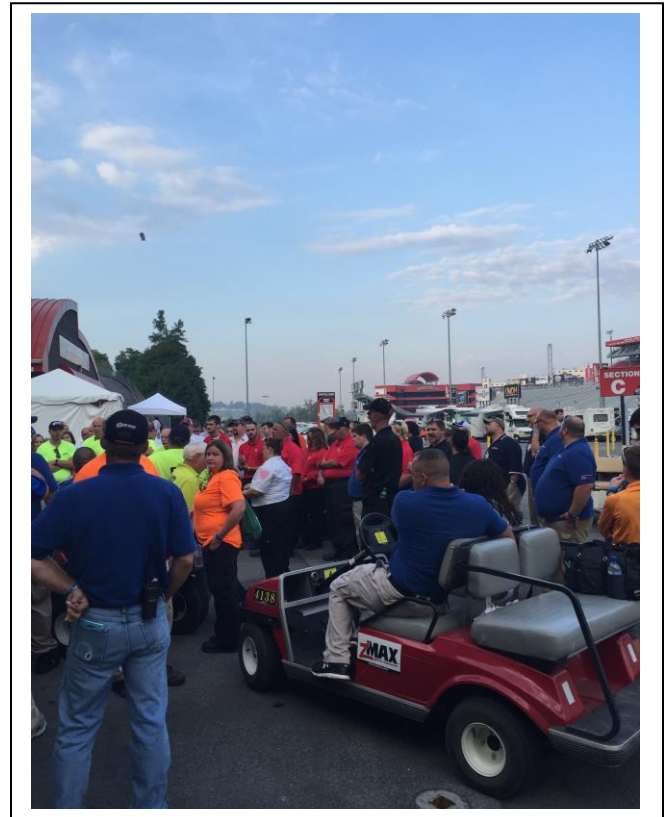


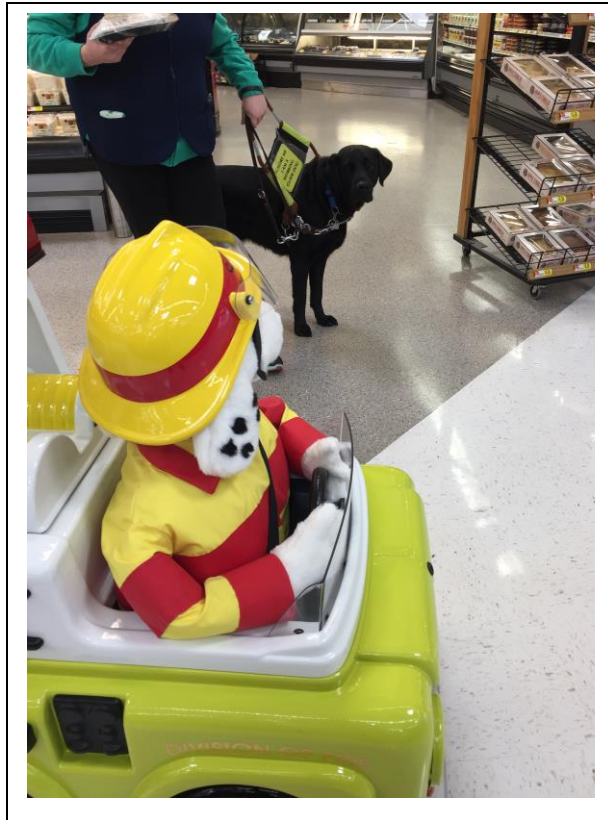
Pedal Carts for DUI/Distracted Driving
Driving Simulator
Holston Valley Medical Center
Trauma Service and Kingsport,
Sullivan County PD



Bristol Motor Speedway and Battle at Bristol
Football

Regional Fire, PD, EMS, Sullivan County EMA,
Wellmont Health System, Wellmont 1 Flight Team





Fire Safety and Emergency Preparedness

Kingsport Fire Department and
Holston Valley Trauma Center
Trauma Service

