

**Safe Communities America
National Re-accreditation
2015**

Madison County, Kentucky



safe
COMMUNITIES
AMERICA®
MADISON COUNTY, KY
NATIONAL SAFETY COUNCIL

Section 1: Contact Information

Lloyd Jordison, RN	Jenilee Kenyon, MS
Madison County Safety Coalition	Madison County Health Department
PO Box 1047	1001 Ace Drive
Berea, KY 40403	Berea, KY 40403
WilliamL.Jordison@ky.gov	Jenileer.Kenyon@ky.gov
(859)228-2059	(859)228-2041

Section 2: Community Description

Describe your community's history and what makes your community unique:

Madison County, Kentucky, one of the state's 120 counties, was established on August 22, 1786. It was named for the Virginia statesman, James Madison, who later became the fourth president of the United States. It served as home for Fort Boonesborough, founded by Daniel Boone. Both cities of Madison County, Berea and Richmond, were primary focal sites for activities during the Civil War. Berea College is recognized for its founding as one of the first colleges in the south to admit African Americans. Currently, the school enrolls approximately 1600 students that represent Appalachian states, but does admit students from all fifty states as well as many foreign countries. Eastern Kentucky University (EKU), located in Richmond, is a regional state university that served as an early teacher's college. Although it retains status as a university dedicated to the preparation of teachers for diverse subjects and levels, it provides programs for 16,000+ students in the health sciences (nursing, occupational therapy, health education, public health, health care administration, and environmental health), law enforcement, and many others.

Madison County is located in the central region of Kentucky with Interstate 75 cutting a north to south route through the county. According to the 2014 US Census, the population is estimated to be 87,340. The population by gender is 48.6% male and 51.4% female. Geographic land mass of the county is 440 square miles, making it the largest in the 17 county Bluegrass Area Development District (BGADD.) The county ranks third in population growth for the BGADD. Both Richmond and Berea continue to grow; Berea ranked first and Richmond ranked third for city growth in the district.

Madison County is composed of three local government systems, Berea City Council, Richmond City Commission and the Madison County Fiscal Court. Fire and Law Enforcement departments are part of all three systems. A Kentucky State Police Post is also located in Richmond, the county seat. Other safety and security departments are part of Eastern Kentucky University, Berea College, Bluegrass Army Depot, and the Kentucky Department for Fish and Wildlife.

Due to the public's need for safety, several large community agencies are proactive in preparing for major types of natural and man-created disasters. Yearly simulated disaster drills are conducted in Madison County to prepare for these types of disasters. Agencies involved in these disaster drills include, but are not limited to: Baptist Health (formerly Pattie A. Clay Hospital)-Richmond, St. Joseph Hospital-Berea, Emergency Management Agency, health department, law enforcement agencies, fire departments, emergency medical service, local governments and schools.

Geographic location of the county places residents at risk for several natural hazards, including: tornados, winter weather storms (snow and ice) and flooding. The Kentucky River provides an eastern and northern border of the county. Residents living in low lying areas along the river are prone to flooding during rainy seasons. Winters in recent years have brought snow and ice storms that have crippled the county. The most recent of these winter events occurred in January 2009. Madison County experienced wide spread electrical outages, which crippled the county. During that time, emergency shelters were established to accommodate individuals who could not remain in their homes. The American Red Cross, Eastern Kentucky University (EKU), Madison County Health Department, Madison County School System and some local churches helped staff and maintain the shelters.

Why is your community seeking a Safe Communities accreditation?

The Madison County Safety Coalition (MCSC) seeks accreditation/recertification for two purposes: 1- to improve the health, safety and quality of life for residents, 2- to implement safety programs designed to increase safety and prevent injuries.

Who in your community is taking the lead in organizing this effort?

The Madison County Health Department (MCHD) took the lead in organizing this group in the fall of 2000. Since the start of MCSC, MCHD has been the leader in the public health and safety programs implemented by the county and continues to involve the public as well as county officials and community agencies. It is only natural that the Health Department takes the lead in this effort as many safety issues surround public health.

Section 3: Criteria to Be a Safe Community

I. Sustained collaboration

1. Describe your Safe Communities Coalition.

- a. **Name of the Coalition:**
Madison County Safety Coalition (MCSC)
- b. **Members, their organizational affiliations and email address:**
(See Appendix A and for Organizational Chart see Appendix B)
- c. **Organizational support:**
(See Appendix E)

d. **Date the group was formed:**

The Madison County Safety Coalition (MCSC) was formed in the fall of 2000 by the Madison County Health Department. The decision to form the coalition was made after several highway deaths in 2000 sparked recognition that injury prevention is a public health issue. Since the coalition's inception it has been a leader in injury prevention for Madison County, Kentucky.

e. **Meeting notes** (See Appendix C)

2. Mission Statement

The MCSC's mission is to "Create a Culture of Safety in Madison County, KY".

The coalition is guided by the following beliefs:

- We recognize that preventable injuries of all types are a public health issue
- We recognize that no one entity or institution has the ability or resources to be the sole advocate for injury prevention
- We believe that the community as a whole is better able to address injury prevention issues
- We believe that by increasing the awareness of partner activities, we can support each other and reduce duplication, making all of our efforts more effective

3. Communications Strategy:

Through the years a vibrant and diverse group of community members have made our efforts more effective. Membership includes representation from a number of community sectors: healthcare professionals, first responders (Fire, Emergency Medical Services, and Law Enforcement), coroner, judicial representatives, mental health professionals, faith community members, educators from preschool, elementary, secondary and post secondary facilities, researchers, planners, traffic safety professionals, members of other local coalitions, representatives from regional, state and federal programs, and other community members. (See Appendix A: Community Coalition Member List). The MCSC is unique because it has prospered by determining where others are working on safety in the community and joining their efforts.

Many of our coalition members are leaders in other coalitions. We often collaborate with projects they are involved in and in turn they help in our initiatives. The key is finding common goals and communication between people and organizations. The MCSC meets face-to-face every other month for a coalition meeting. E-mail communication is vital to our ongoing efforts to stay informed and is utilized heavily between meetings. Information for the public about meetings and other safety initiatives is shared through our Facebook page, our Website and our community's extensive e-mail distribution networks. Both the Facebook page and website are currently under construction to improve the way we share information and communicate with the public. The MCSC Coordinator also attends State and National Conferences to share information about MCSC to others outside of our borders.

The MCSC coordinator is employed by the Health Department and is partially funded through grants. The coordinator is responsible for monitoring and tracking activities and local data. Reporting of activities is a requirement of the Health Department's community health plan as well as for any grant funding. In MCSC meetings, members share updates of activities and progress towards each organizations injury prevention and safety goals and strategies. Outcomes are reported annually to the coalition membership.

II. Data Collection and Application

1. Community demographics

Total Population					
Area	2009	2010	2011	2012	2013
Labor Market Area	699,382	704,298	710,839	717,494	723,362
Madison County	83,258	83,143	84,101	84,759	85,590
Richmond	33,458	31,459	31,861	32,112	32,550

Source: U.S. Department of Commerce, Bureau of the Census, Annual Estimates.

Population by Selected Age Groups, 2013				
Demographic	Madison County		Labor Market Area	
	Number	Percent	Number	Percent
Under 16	16,161	18.9	144,367	20.0
16-24	16,826	19.7	105,175	14.5
25-44	21,329	24.9	195,323	27.0
45-64	20,578	24.0	186,133	25.7
65-84	9,504	11.1	81,369	11.2
85 and older	1,192	1.4	10,995	1.5
Median Age	34.4		36.4	

Source: U.S. Department of Commerce, Bureau of the Census.

Population by Race and Hispanic Origin, 2013				
Demographic	Madison County		Labor Market Area	
	Number	Percent	Number	Percent
White	78,773	92.0	632,142	87.4
Black	3,892	4.5	60,720	8.4
Am. Indian & Alaska Native	302	0.4	2,230	0.3
Asian	979	1.1	14,462	2.0
Native Hawaiian & other Pacific Islander	50	0.1	425	0.1
Other/Multirace	1,594	1.9	13,383	1.9
Hispanic Origin	1,890	2.2	32,964	4.6

Note: Hispanic is not a race category. A person can be white, black, etc. and be of Hispanic origin.

Source: U.S. Department of Commerce, Bureau of the Census

Population Projections				
_____	2015	2020	2025	2030
Madison County	89,055	95,333	101,543	107,665

Source: Kentucky Data Center, University of Louisville

2. Injury Data (see Appendix F, limited local data sorted by age, race or gender is available for Madison County)

Motor Vehicle Crashes

Total		Fatal Collision		Injury Collision		Damage Property		Persons Killed		Injured	
2013	2014	2013	2014	2013	2014	2013	2014	2013	2014	2013	2014
2,440	2,522	11	8	369	361	2,060	2153	12	10	544	535

Source: http://www.kentuckystatepolice.org/pdf/KY_Traffic_Collision_Facts_2013.pdf

Motor Vehicle Deaths (per 100,000,000 miles driven)	Madison	Kentucky	USA
	0.9	2.1	1.5

Source: [The Health of Kentucky: A County Assessment \(Traffic Collisions in Kentucky\)](#)

Older Adult Falls

Number of fall-related inpatient hospitalizations for residents of MADISON County ages 65+					
-----	2010	2011	2012	2013	2014
Female	81	77	64	44	52
Male	29	23	18	24	20
Total	110	100	82	68	72
Population - Madison	82,916	84,829	85,206	86,181	87,340
Falls per 100,000					
Female	97.69	90.77	75.11	51.06	59.54
Male	34.98	27.11	21.13	27.85	22.90
Total	132.66	117.88	96.24	78.90	82.44

Kentucky Falls Totals					
-----	2010	2011	2012	2013	2014
Female	5,602	5,821	5,827	5,788	5,866
Male	1,929	1,967	1,899	2,140	2,298
Total	7,531	7,788	7,726	7,928	8,164
Population -KY	4,339,367	4,370,038	4,383,465	4,399,583	4,413,457
Falls per 100,000					
Female	129.10	133.20	132.93	131.56	132.91
Male	44.45	45.01	43.32	48.64	52.07
Total	173.55	178.21	176.25	180.20	184.98

Source: <http://www.safekentucky.org/index.php/top-menu-injury-data>

Poisoning by Prescription Drug Overdoses

County of death	Number of deaths due to drug overdose			2014 county population	Drug overdose deaths in the county per 100,000 county residents in 2014*
	2012	2013	2014		
Madison County	21	12	23	87,340	26.3

*Please note: The Office of Vital Statistics does not report an exact number if county deaths are less

Source:

<http://odcp.ky.gov/Documents/2014%20ODCP%20Overdose%20Death%20Report%20final1.pdf>

Violence and Suicide

MADISON COUNTY

Group A Offenses By Category	State Police		Sheriff		Berea		Richmond		EKU Police		All Other Agencies		Total	
	Offenses		Offenses		Offenses		Offenses		Offenses		Offenses		Offenses	
	Reported	Cleared	Reported	Cleared	Reported	Cleared	Reported	Cleared	Reported	Cleared	Reported	Cleared	Reported	Cleared
Arson	3	0	2	0	2	0	8	5	0	0	0	0	15	5
Assault Offenses	74	67	91	47	157	101	572	480	26	16	4	4	924	715
Bribery	0	0	0	0	1	0	2	2	0	0	0	0	3	2
Burglary/Breaking and Entering	120	19	93	4	99	9	261	87	43	2	0	0	616	121
Counterfeiting/Forgery	26	24	82	42	39	5	267	228	3	1	0	0	417	300
Destruction/Damage/Vandalism Of Property	34	19	57	3	59	14	327	108	137	6	1	1	615	151
Drug/Narcotic Offenses	100	41	131	84	326	258	955	887	45	43	13	13	1570	1326
Embezzlement	0	0	0	0	0	0	0	0	0	0	0	0	0	0
Extortion/Blackmail	0	0	0	0	0	0	0	0	0	0	0	0	0	0
Fraud Offenses	16	5	23	5	115	10	127	86	4	2	2	2	287	110
Gambling Offenses	0	0	0	0	0	0	0	0	0	0	0	0	0	0
Homicide Offenses	1	1	0	0	0	0	5	3	0	0	0	0	6	4
Kidnapping/Abduction	0	0	2	0	5	3	13	11	0	0	0	0	20	14
Larceny/Theft Offenses	169	52	285	51	254	39	1199	607	137	16	1	0	2025	765
Motor Vehicle Theft	21	5	22	5	9	0	50	23	0	0	0	0	102	33
Pornography/Obscene Material	27	24	3	2	3	0	4	1	0	0	4	0	41	27
Prostitution Offenses	0	0	0	0	0	0	2	2	0	0	0	0	2	2
Robbery	0	0	7	0	1	0	62	43	5	0	0	0	75	43
Sex Offenses, Forcible	31	27	8	2	41	35	43	31	6	2	0	0	129	97
Sex Offenses, Nonforcible	15	15	1	1	52	52	3	3	0	0	0	0	71	71
Stolen Property Offenses (Receiving, etc.)	27	21	39	28	5	2	74	65	2	0	3	3	150	119
Weapon Law Violations	3	2	6	5	6	2	35	34	0	0	0	0	50	43
Total	667	322	832	279	1174	530	4009	2706	408	66	28	23	7118	3948

Source: http://www.kentuckystatepolice.org/pdf/cik_2014.pdf

215

Violent Crime Offenses (per 100,000 population)	Madison	Kentucky	USA
		139	184

Workplace Injuries

Occupational Fatalities (per 100,000 workers)	Madison	Kentucky	USA
	2.1	8.0	5.0

Source: The Health of Kentucky: A County Assessment (Kentucky Department of Labor, Census of Fatal Occupational Injuries)

3. Data Summary Table

Type of Injury	Trend
Motor vehicle crashes	Motor vehicle injuries decreased in Madison County from 544 to 535 or decrease of 1.65% and vehicle deaths per 1M miles driven was 58% less than Kentucky as a whole even though the county population increased 1% from 2013 to 2014
Older Adult Falls	Older adult falls increased from 68 to 72 or approximately 6% from 2013 to 2014
Poisoning by Rx Drug Overdose	Drug overdoses increased approximately 6% from 2012 compared to 2014
Violence and Suicide	From 2013 to 2014 reported violent crimes increased 5.57% From 2013 to 2014 reported drug and narcotic crimes increased 11.74% The age-adjusted rate for Kentucky self-harm related hospitalizations decreased 4.8% from 2011 to 2012. Local data for suicide is not available.
Workplace Injuries and Emergency Preparedness	No known preparedness related injuries or deaths in the past 3+ years. No work related deaths in the past 3 years.

4. Data Source

- a. Older Adult Falls: Source <http://www.safekentucky.org/index.php/top-menu-injury-data>
- b. Motor vehicle crashes: Source http://www.kentuckystatepolice.org/pdf/KY_Traffic_Collision_Facts_2013.pdf
- c. Poisoning by Rx Drug Overdose: Source <http://odcp.ky.gov/Documents/2014-%20ODCP%20Overdose%20Death%20Report%20final1.pdf>
Violence and Suicide: Source http://www.kentuckystatepolice.org/pdf/cik_2014.pdf
- d. Workplace Injuries and Emergency Preparedness: Source <http://www.mc.uky.edu/kiprc/>

5. Project Goals

MCSC has a number of projects in place at any given time. Many of the goals are determined by our Mission to “Create a Culture of Safety” in Madison County. They are influenced by funding sources that may have specific goals in place for said funding. They are influenced by which agency is taking the lead on any given project.

- Re-Think Your Ride
 - To increase the number of students using seat belts at our three public high schools
 - To decrease the number of student distracted drivers in our three public high schools
- Always Buckle up Children in the Backseat
 - To decrease the number of elementary students at parent pick up/drop off at Madison Counties 11 elementary schools that are riding in the front seat.
 - To increase the number of elementary students at parent pick up/drop off at Madison Counties 11 elementary schools that using seat belts
- Tornado Safe Havens:
 - To increase the number of Tornado Safe Haven sites in Madison County for those that do not have adequate severe weather shelter.
- Falls Coalition
 - To reestablish a functioning Fall Prevention Coalition in Madison County
 - To increase fall prevention community safety fair from once in the fall to once in the fall and once in the spring
 - To increase the number of active members and supporters of the Fall Prevention Coalition
 - To decrease the number of hospitalizations from falls in Madison County
- Prescription Drug Drop Boxes
 - To maintain the two county drop boxes
 - To increase the pounds of medication
 - To establish alternatives for needle disposal
- Ghost Out
 - To decrease the number of high school students involved in alcohol related collisions in Madison County
- Pedestrian Safety
 - To decrease the number of pedestrian related collisions in Madison County
 - To increase the number of pedestrian safe crosswalks in Madison County
- Safety City
 - To increase the number of elementary age students who tour Safety City
 - To have every elementary student in Madison County tour Safety City at least one time
- Seat Belt usage
 - To increase the number of drivers and passengers who use seat belts in Madison County
 - To decrease the number of injuries related to motor vehicle collisions in Madison County

- Worksites
 - To increase the number of worksites involved with coalition activities
 - To increase the number contacts with worksites with injury prevention education
- Child Passenger Safety
 - Increase the number of certified CPS technicians in Madison County
 - Increase the number of CPS installation/inspections done
 - Increase the number of community car seat check events

6. How will the data be used in the development of new strategies?

Data is monitored regularly for evaluation and guidance. Some projects/programs have specific requirements from funders. Each project that we do we always try to do a plus/delta evaluation. We monitor community data that covers multiple types of injury and violence. Through the years we have adopted new programs when data shows an area in need of attention. An example of this is when we started seeing an increase in poisoning deaths in our community we initiated some programs (Meth Endangered Child project, drug take back drop boxes) and worked with partners in their programs (Walk Your Land – An extension program to increase awareness of farmers about meth labs).

Some data is measuring activities (number children that tour Safety City) others measure behavior changes (seat belt usage rates) or results (number of high visibility crosswalks). We use all types of data to make the best decisions about activities. We look for areas with the greatest need (MV collisions, poisoning, falls), but the metrics for choosing what programs/projects to pursue include much more than individual stats. Variables include but are not limited to: funding, technical ability, political will, community readiness, availability of partners, is it evidence based (research based, science based, best practice, promising), is there long term potential. All of these factors are important if it is a behavior change, policy change or an environmental (infrastructure) change that we are working towards.

Madison County Safety Coalition along with supporting organizations and other coalitions within our borders share data that is collected. The Affordable Care Act has created an opportunity for hospitals to complete a Community Health Assessment. Community Health Assessments are done in public health nursing classes at University of Kentucky, Eastern Kentucky University, and Berea College. The Madison County Health Department does a Community Health Assessment (CHA) and a Community Health Improvement Plan (CHIP) every five years. Data that is shared with all these groups have helped “Create a Culture of Safety” in Madison County. The programs that are being developed often address injury prevention. It also drives how and what grant applications are made. An example is that though the 2015 CHA a Health and Safety survey not just a Health survey was done. The outcome of the process was that three focus areas were identified; Substance Abuse, Mental Health, and Healthy Lifestyles. In each of these areas community partners are taking the lead in developing goals and community impact projects. The substance abuse group will be addressing poisoning. The mental health group is working on suicide and violence prevention. The healthy lifestyles group will be working on nutrition, physical activity and diabetes issues. They

have already identified the need for a safe pedestrian and bicyclist infrastructure for our communities to address the healthy lifestyles issues. We also have a community Health and Wellness Network that involves our local health care providers (Hospitals, Federally Qualified Health Center, MD offices, Long Term Care, Home Health, other clinics). This group is also taking up these issues. Many MCSC members are also a member of a group that is taking the lead on any given project.

By keeping the lines of communication open and sharing data through our coalition members and partner organizations we reduce duplication of efforts and are better able to respond to community needs quickly.

III. Effective Strategies to address unintentional and intentional injuries

Injury Area: Motor Vehicle Injuries						
Project Name	Project Goal	Project Description	Is this promising or evidence based? Include the source.	Target group (age, gender, vulnerable populations)	Length of project	Partners
Child Passenger Safety Program	To increase the number of children using an appropriate Child Passenger Safety seat correctly	Fitting stations are provided locally for car seat inspection and installation Car Seats are provided at low cost or free if funds are available. Community Education about car seats are provided in multiple settings.	Evidence Based Community Guide; http://www.thecommunityguide.org/mvoic/childsafetyseats/index.html	Parents, Grandparents and anyone who transports children.	15 yrs.	Madison County Health Department, Kentucky State Police, Whitehouse Clinic, KY office of Highway Safety, Safe Kids, KY Transportation Cabinet District 7, Federal Highway Administration, Local First Responders

Injury Area: Unintentional Injuries – multiple types						
Project Name	Project Goal	Project Description	Is this promising or evidence based? Include the source.	Target group (age, gender, vulnerable populations)	Length of project	Partners
Safety City	Decrease unintentional injuries in children	Safety City is a hands on learning lab for children. Children tour a miniature city that has a smoke room, school bus, rail road crossing, ATV, traffic signals and crossings, a boat dock and a multitude of injury prevention education materials. Health Educators and First Responders teach injury prevention coordinated with school curriculum and Risk Watch materials.	Evidence Based CDC's National Health Education Standards: http://www.cdc.gov/healthyschools/sher/standards/index.htm	Elementary School age Children and their parents	10 years	All 3 local school systems, Madison County Fiscal Court, Madison County Health Department, All local first responders; fire ambulance, law enforcement, KY Fish and Wildlife, KY Transportation Cabinet, KY office of Highway Safety. CXX Railroad, Operation Life Savers, Eastern Kentucky University BSN program, MC Solid Waste, Berea College CELTS program, MC Extension Services, local businesses, Be a Children's Champion, Bluegrass Army Depot

Injury Area: Pedestrian Injuries and Fall prevention						
Project Name	Project Goal	Project Description	Is this promising or evidence based? Include the source.	Target group (age, gender, vulnerable populations)	Length of project	Partners
Pedestrian Safety Program	Decrease pedestrian injuries, Decrease falls	This project uses education, and policy development to improve the infrastructure for pedestrians. Work with local planning and zoning boards. Work with local and state road crews to require high visibility pedestrian crossings that are ADA compliant.	Evidence based Federal Highway Administration: https://www.fhwa.dot.gov/environment/bicycle_pedestrian/publications/sidewalk2/sidewalks208.cfm	All ages. Seniors, children and youth, adults who walk in our communities.	4 yrs.	Madison County Health Department, Kentucky Office of Highway, Safe Kids, Fed Ex, KY Department of Public Health, Age Friendly Berea, Federal Highway Administration, KIPRC, NHTSA, Safe States, AARP, Bluegrass Area Development District, Madison County, City of Richmond, City of Berea, KY Dept of Transportation District 7, Eastern Kentucky University, Berea College, Friends of Boone's Trace, Madison County Greenways and Trails, Richmond PD, Berea PD, EKU PD, Berea FD, MC Ambulance, Richmond Chamber of Commerce

IV: Evaluation methods

Activities	Outcomes	Length	Indicator (s)	Method	Result
What did you (or will you) do?	What does success look like?	Short, intermediate, or long term outcomes?	What did you (or will you) measure?	How did you (or will you) measure it?	What did you find? (if applicable)
Child Passenger Safety Program	Decrease the number of Children under the age of 9 years olds who are injured in a Motor Vehicle (MV) Collision	Increase the number of CPS Technicians in Madison County, To increase the number of community inspection events: Short term and long term	The number of community events. The number of inspections done. The number of injuries to children involved in MV collisions.	Tracking the number of inspections and events done in Madison County, Monitor the KY Collision Analysis Data	In 2014 the number of Certified technicians in Madison County had decreased to 4 As of December 2015 we currently have 8 Certified Technicians. Planning and Funding has been put in place for 2016 to increase the of community events in Madison County.
Safety City	Every Elementary age child in Madison County will tour Safety City at least one time.	Increase the number of schools that participate: Short term and long term.	Number of Schools that participate, Number of Students who participate	Track the number of participants.	In 2014-15 school year, because of incentives used. The number of participants increased from under 300 to just over 1000 participants. In 2015-16 school year there have already been 800+ participants
Pedestrian Safety Program	Every new street development will have high visibility (Piano Key or Ladder type) crosswalks Policy in place requiring new development provide high visibility crossings	Long Term	Number of subdivisions and roads that have high visibility crosswalks	Direct observational of newly developed streets Assess Planning and Zoning requirements	In 2015 one of the three local governments passed requirements for new development to have high visibility crossings Two high profiled developments in the City of Richmond have already complied with the requirements.

Section 4: Community Inventory of Safety and Injury Initiatives

Motor Vehicle

Name of initiative	Target group
Re-Think Your Ride	High School Students
Always Buckle-Up Children in the Backseat	Elementary age children
Ghost Out	High School Students
Click It or Ticket	Ages 16+
Parenting Classes	Parents
Safety City	Entire Community
Child Fatality Review	Under 18 years of age
Child Passenger Safety Team	Ages 16+
Alive at 25	Young Adult Drivers
Drive Safe, Drive Sober	Ages 16+
Friday Night Lights	Ages 16+
Drivers Education in Schools	Ages 16+
Motorcycle Safety at ECU	Motorcycle Drivers and Riders

Older adult fall prevention

Name of initiative	Target group
Fall Prevention Coalition	Older Adults
Safety City	Entire Community
Fall Wise	Older Adults
Silver Sneakers	Older Adults
Physical Activity Guide	Older Adults
YMCA Body Recall	Older Adults
Home Health Safety Checklist	Older Adults
Berea Age-Friendly Community Survey	Entire Community

Poisoning prevention

Name of initiative	Target group
Med Drop Boxes	Entire Community
Madison County ASAP Board	Entire Community
Faith Taskforce	Children and Teens
Safety City	Entire Community
Liberty Place	Adult Women
Hidden in Plain Site	Parents and Teachers
Too Good for Drugs	Middle School Age
True Lies	Middle School Age
Trooper Island	Teens
Destructive Decisions	Teens
Don't Get Scammed	Adults
Life Choices	Teens
CHIP	Entire Community

Workplace Safety

Name of initiative	Target group
Richmond Pedestrian Safety	Employees who walk to work
Lawnmower Safety	High School Students
Babysitting Classes	High School Students
Safety City	Entire Community
OSHA	Employees
LEPC (Local Emergency Planning Committee)	Employers and Employees

Violence and Suicide Prevention

Name of initiative	Target group
Green Dot Program	
GREAT	Middle School Age
Richmond Police Camp	12-18 years of age
Hopes Wings	Women and Children of Domestic Violence
Bluegrass Domestic Violence Program	Women and Children of Domestic Violence
True Lies	Middle School Age
Trooper Island	9-12 Years of Age
Destructive Decisions	Teens
Take Back the Night	Entire Community
Internet Safety	Teens
MARS (Men Against Rape and Sexual Assault)	Men and Women

Emergency Preparedness

Name of initiative	Target group
Medical Reserve Corps	Entire Community
Tornado Safe Havens	Residents of Mobile Homes
Safety City	Entire Community
Psychological First Aid	Entire Community and First Responders
Strategic National Stockpile (SNS)	Medical Personnel and First Responders
Migrant Preparedness Outreach	Migrant Workers
Medical Needs Sheltering	Medically Dependent Population
Emergency Transportation	Essential Medical Personnel
CSEP	Regional Residents and Workers
Red Cross	Population in need of post event services
Salvation Army Shelters	Population in need of Housing & Clothing
Baptist Disaster Relief	Entire Community
VOAD	Population in need of post event services
2Kentucky Outreach Information Network (KOIN)	Entire Community
Everbridge	Entire Community

Appendix A: Community Coalition Member List

Madison County Safety Coalition 2015

Last Name	First Name	E-Mail	Organization	Coalition Leadership
Adams	Connie	randcadams@bellsouth.net	KY - Community Crisis Response Team	Psychological First Aid
Adams	Lisa	lmadams@uky.edu	EKU BSN	
Adams	Phillis	phillis.adams1@gmail.com	Be a Children's Champion	
Adams	Phillis	adamsphillis@bellsouth.net	2nd e-mail	
Alexander	Barney	barney.alexander@aim.com	MC Fire Department	
Arthur	Brittany	brittany.arthur@wellcare.com	WellCare Insurnce	
Balderas	Chris	c5icab@yahoo.com	MC Ambulance	
Ballard	Michael	michael.ballard@eku.edu	EKU Public Health - Chair	
Ballard	Pat	pmb4farristown@aol.com	Faith Task Force	Treasure, Substance Abuse, Faith Task Force
Bently	Barbara	bbent@mis.net	Citizen	
Bhandari	Michelyn	michelyn.bhandari@eku.edu	EKU - Public Health	Richmond Pedestrian Safety Team
Brassfield	Amy	aebras2@uky.edu	Flight Nurse	
Brock	Larry	lbrock@richmond.ky.us	Richmond Police Dept. Chief	Prescription Drug Take Back
Brown	Brandy	brandybrown@kycourts.net	District Judge	
Brown	Mitch	mitchbrown1097@gmail.com	Pastor	
Bryden	Phyllis	phyllis.bryden@eku.edu	EKU Public Health	
Bryden	Phyllis	phyllis.bryden@eku.edu	EKU Public Health	
Carter	Kim	Kim.Carter@ky.gov	Kentucky Office of Highway Safety	
Cash	Charles	charles.cash@madison.kyschools.us	Madison County Schools	
Chaney	Christopher	cchaney@bgadd.org	Bluegrass Area Development District	
Chriswell	Bob	criswellbob@hotmail.com	Law Enforcement Liason KYTC	
Clark	Debbie	debbie.clark@headstart1.org	Headstart	
Clark	Ken	ltkclark@hotmail.com	Berea Police Dept.	Violence Prevention
Cochran	Ashley	ashley_cochrane@bereda.edu	Berea College CELTS	
Colligan	Rebecca	rebeccaj.colligan@ky.gov	MC Health Department - Safety City/CPS	Secretary, Safety City, CPS
Collins	Judy	Judy.Collins@ky.gov	Regional Epidemiologist	
Collins	Kimberly	kimberlyt.collins@ky.gov	MC Health Department - Support	
Cornelison	Jimmy	coronerjc@aol.com	MC Coroner	Child Fatality Review Team
Cox	Jim	jim.cox@madisoncountky.us	MC Fire Department - Chief	Fire Safety & Safety City
Coyle	Carlos	ccoyle@madisoncountyems.com	MC Emergency Medical Services	Child Fatality Review Team
Coyle	Mike	mike.coyle@madisoncountky.us	MC Sheriff	
Crewe	Nancy	nancym.crewe@ky.gov	MC Health Dept. - Director	
Crockett	Chris	Chris.Crockett@ky.gov	Kentucky State Police	
Crockett	Greg	Greg.Crockett@ky.gov	Kentucky State Police	
Cross	Shirl	slcross1@hotmail.com	Economic Development - Richmond	
Crump	Fred	hfc Crump@yahoo.com	Telford YMCA	
Darst	Scott	bsdars2@uky.edu	MC Extension Office - Agent	
Daugherty	John	jrdougherty@bereahealthcare.com	Berea Health Care Center	
Davidson	Donnie	ddavidson@beraeky.gov	City of Berea - Road Department	
Elkins	Shannon	shannon_elkins9@mymail.edu.edu	Citizen	
Farris	Larry	Larry.Farris@ky.gov	Ketucky State Police	
Foley	Codi	codi.foley@ky.gov	MC Health Dept. - Falls Coalition	Falls Coalition

Madison County Safety Coalition 2015

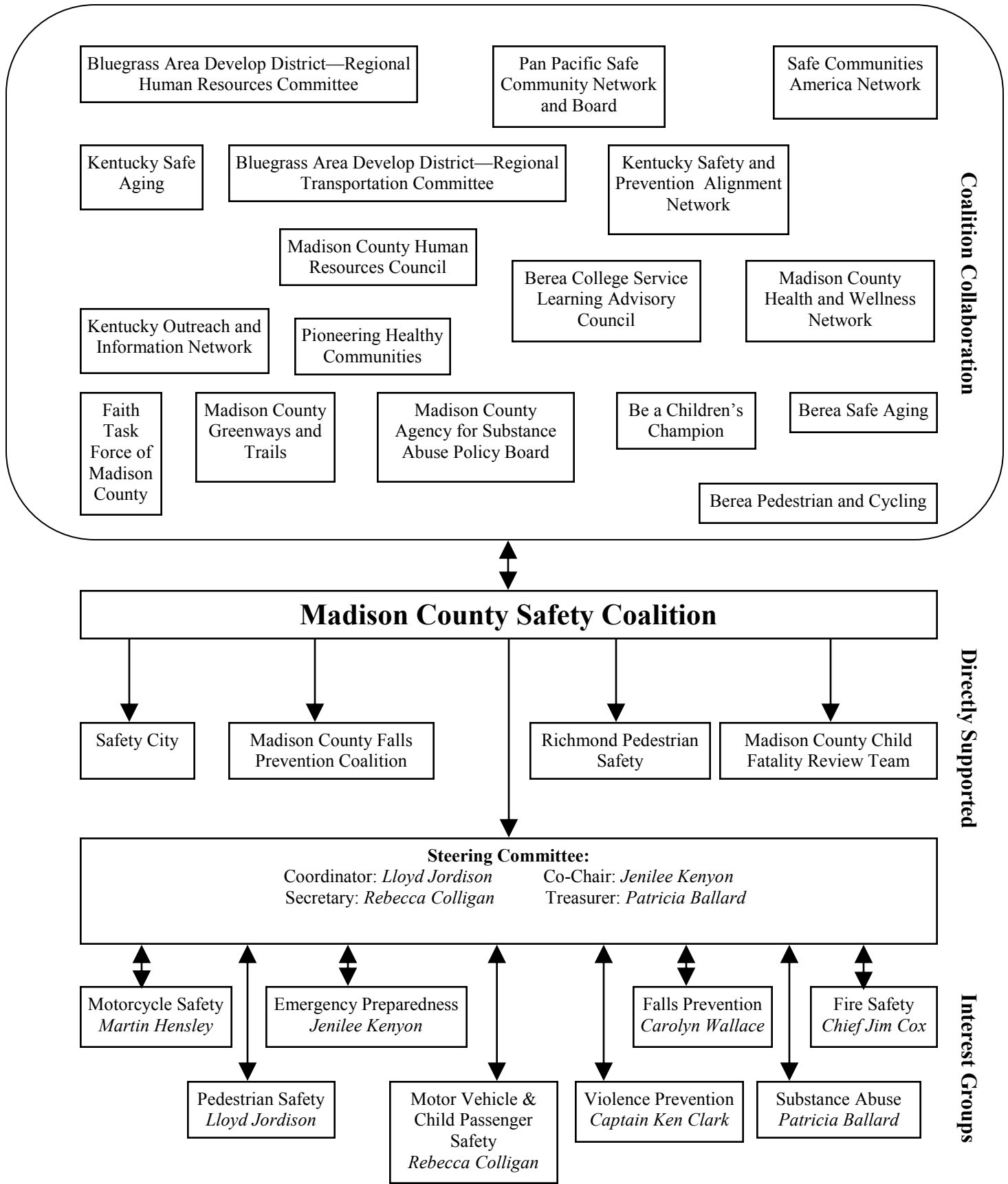
Francis	Pamela	psfr222@uky.edu	MC Extension Office - Parenting	
Gay	Eva	mikeeva1996@roadrunner.com	Central Bank	
Gay	Lisa	lisa.gay@madison.kyschools.us	Family Resource Center Director	
Gilliam	David	david.gilliam@madison.kyschools.us	MC School - Chief Academic Officer	
Graves	Allison	alikat957@aol.com	MC Emergency Medical Services	
Gregory	David	dgregory@bereaky.gov	Berea Police Dept.	
Hager	Latonya	latonyahager@gmail.com	Operation Unite - Berea	
Hale	Mike	mikeshikeandbike@bellsouth.net	Owner Bike and Hike Shop	
Hardiman	Anna	annahardiman@kycourts.net	Juvinal Justice	
Haynes	Mary Ann	maryann.haynes@madison.kyschools.us	Youth Services Center Director	
Heckman	Katie	katieheckman@catholichealth.net	St. Joseph Hospital Berea	
Hensley	Martin	martin.hensley@ky.gov	MC Health Dept. - Motorcycles/IT	Motorcycles Safety
Holcomb	Derek	derek.holcomb@eku.edu	EKU Public Health	
Hollon	Paula	paulaa.hollon@ky.gov	MC Health Department - Community Ed.	
Hudgins	Lavoyed	lavoyed_hudgins@berea.edu	Berea College - Security	
Jackson	Janice	jjackskpta@aol.com	Kentucky PTA	
Jones	Jennifer	jjones@bereaky.gov	Berea Parks and Recreation	
Jordison	Lloyd	williaml.jordison@ky.gov	MC Safety Coalition	Coordinator
Jordison	Susan	sjordison@windstream.net	Rockcastle County Board of Education	
Judy	Michelle	mjudy@hrc-manorcare.com	Heartland Rehab	
Kenyon	Jenilee	jenileer.kenyon@ky.gov	MC Health Department - Preparedness	Co-coordinator, Emergency Preparedness
Kirby	Harold	safetycity@madisoncountkyky.us	Citizen	
Kirby	Harold "Butch"	safetycity@roadrunner.com	Citizen - Retired Fire Fighter	
Larkin	Laurie	laurie.larkin@eku.edu	EKU Public Health	
Lowe	Dayna	dayna.lowe@madison.kyschools.us	Madison County Schools	
Marcum	Michael	mike.marcum@madisoncountkyky.us	Madison County Schools	
Mc Cool	Robert	rmccool@uky.edu	KIPRC - Fire and Transportation	
McBride	Kelly	kmcbride@madisoncountyma.net	MC EMA	
McCoy	Matt	Matt.McCoy@ky.gov	Kentucky Office of Highway Safety	
McGill	Carroll	Carroll.McGill@ky.gov	Citizen	
Mcguire	Rhonda	rhondaf.mcguire@ky.gov	MC Health Department Clinic	
McKee	Genia	semcke2@uky.edu	KIPRC - Safe Communities America	
McKinney	Molly	molly.mckinney@eku.edu	EKU - Public Health	
Mills	Laurel	Laurel.Mills@eku.edu	EKU Public Health	
Moore	Erin	erinmoore@richmond.ky.us	Richmond Parks and Recreation	
Moreland	Robyn	robymoreland@yahoo.com	MC ASAP Board	
Mott	Robert	rmott@richmond.ky.us	Richmond Police Dept.	
Mullins	Brian	brian.mullins@eku.edu	EKU Police Dept.	
Mullins	Lottie	LottieM.Mullins@ky.gov	MC Health Dept. Community Ed	
Neeley	Randy	randy.neeley@madison.kyschools.us	Madison County Schools	
Oberst	George	mail.gso@gmail.com	Berea Planning and Zoning	
Parrett	Stephanie	stephanie.parrett@us.army.mil	US Army	
Parrish	Karen	kbhparrish@aol.com	White House Clinic	
Pekola	Michele	marketing@chsofky.com	Chiropractic Solutions	
Petry	Jerian	jerian_petry@yahoo.com	MC ASAP Board	

Madison County Safety Coalition 2015

Pollack	Susan	susan.pollack@uky.edu	KIPRC - Safe Kids	
Powell	Scott	teknohillbilly@yahoo.com	Journalist	
Purdy	Robert	Robert.Purdy@ky.gov	Kentucky State Police	
Quinlan	Kimberly	kimberly.quinlan@madison.kyschools.us	Youth Services Center Director	
Quinlan	Sean	sean.quinlan@madison.kyschools.us	Youth Services Center Director	
Randles	Kathy	rastykat@gmail.com	Richmond Lions Club	
Rasor	Vaughn	fairviewbapt@kih.net	Pastor	
Reed	Jake	jreed@bereaky.gov	Berea Police Dept.	
Renfro	Joy	joy.renfro@eku.edu	EKU - Public Health	
Rist	Amanda	amanda.rist@uky.edu	UK Trauma and IP Outreach	
Ritchey	Becky	ekutrc@aol.com	EKU - Violence Prevention	
Robinson	Bill	brobinson@richmondregister.com	Richmond Register - Newspaper	
Rubin	Jeff	jeffrubin@windstream.net	Age Friendly Berea	
Russell	Shawn	shawn.russell@ky.gov	KY Transportation Cabinet - engineer	
Sandlin	Shawn	ssandlin@bereaky.gov	Berea Fire Department	
Schrader	Paul	pschrader@bereaky.gov	City of Berea - GIS Coordinator	Berea Pedestrian & Bicycle Trails
Shearer	Miranda	mshearer@uky.edu	MC Extension - 4H agent	
Short	Judy	judy.short@eku.edu	EKU BSN	
Shupe	Mary Ann	MaryAnn_Shupe@berea.edu	Berea College - Theater	
Simpson	Matt	matt.simpson@ky.gov	Kentucky Office of Highway Safety	
Singleton	Mike	msingle@email.uky.edu	KIPRC - Epidemiologist	
Sizemore	Chris	chris.sizemore@madisoncountyky.us	MC Sheriff Department	
Slinker	Jeremy	jeremy.slinker@ky.gov	Kentucky State Police	
Smith	Amanda	amandas.smith@ky.gov	MC Health Department - Grief Councilor	
Smith	Diane	diane.smith@berea.kyschools.us	Berea Community School Resourc Director	
Sparrow	Charles	cssp224@uky.edu	KIPRC - KSPAN Coordinator	
Stewart	Teresa	teresa.stewart@ky.gov	Child Protective Services	
Suters	Margaret	mtsuters@gmail.com	Faith Task Force	
Suters	William	sutersb@gmail.com	Faith Task Force	
Tenges	Ryan	ryan.tenges@dot.gov	Federal Highway Administration	
Tinsley	Charles	charles.tinsley@ky.gov	Kentucky Vehicle Enforcement	
Wagers	Billy	wagers_b@yahoo.com	Berea City Council	
Wallace	Carolyn	fallgal@windstream.net	MC Falls Prevention Coalition	Coordinator - Falls Prevention Coalition
Warf	Clifton	twarf22@msn.com	CSX Railroad	
Waters	Elaine	elaine.waters@eku.edu	EKU BSN	ReThink Your Ride, ABC in Backseat, Ghost Out
Webb	Jenifer	jenjenwebb@yahoo.com	2nd e-mail	
Webb	Jennifer	jennifer.webb@usdoj.gov	Federal Court Clerk	
Whitaker	Stephany	stephany.whitaker@eku.edu	EKU - Public Health	
White	Amanda	amandan.white@ky.gov	KY Transportation Cabinet	
Wings	Hopes	hope@hopeswings.org	Women and Family Shelter	
Wooten	Billy	Billy_Wooten@berea.edu	Berea College - Business	
Wright	Steve	Steve.Wright@ky.gov	Law Enforcement Liason KYTC	
Young	Tony	tony.young@fhwa.dot.gov	Federal Highway Administration	

Appendix B: Safe Communities Coalition Organizational Chart

Madison County Safety Coalition Organizational Chart



Appendix C: Meeting Minutes



Madison County Safety Coalition Meeting Minutes

March 31st, 2015 – 1PM – Safety City, Richmond, KY

Members Present: Lloyd Jordison (MCHD), Becky Colligan (MCHD), Bill Suters (Citizen), Marty Hensley (MCHD), Jenilee Kenyon (MCHD), Pam Francis (MC Extension Office), Carolyn Wallace (Fall Wise), Sgt. Phillip Powell (KSP), Ken Clark (Berea PD), Matthew Kenney (Berea PD), Molly Meade (safety intern at Lectrodryer), Pat Ballard (Faith Task Force), Constance Adams (MC VOAD), Willard Reardon (Madison Co. Sheriff's Office), Elaine Waters (EKU BSN), Genia McKee (KY Safe Community, KIPRC, KSPAN), Jim Cox (Madison County Fire Dept.)

Introductions: What is your favorite car accessory?

Coalition Business – *Checking Account changes in signatures* – Lloyd stated that Kelly Owens took another position and is no longer employed by the Madison County Health Department. Since Kelly's name was on the Madison County Safety Coalition bank account, her name will need to be taken off. Connie Adams made the motion that Lloyd Jordison **or** Pat Ballard can sign the checks and that Kelly Owens name can be taken off the bank account. Pam Francis seconded the motion. Motion approved. No opposition.

Supporting Be a Children's Champion Billboard contest - Lloyd stated that in the past the Madison County Safety Coalition has supported the Children's Champion billboard contest. Since we do have enough coalition funds to cover the \$100 that we normally donate, do we want to donate again this year?? Ken Clark made the motion to donate \$100 to the Children's Champion billboard contest. This motion was seconded by Marty Hensley. Motion approved. No opposition.

Safe Communities America – Accreditation – Lloyd stated that as of March 23, 2015 our SAFE Communities status for Madison County had expired. The cost to apply for re-accreditation is \$1200.00. Other than the fee, there are minor changes that we will need to make to our coalition meetings – mainly revolving around becoming more formalized. We must have a steering committee and sub-committees; there are certain areas that we have to address, and all of these things need to be formally documented on paper. Lloyd stated that we do have enough Coalition funds to cover the \$1200 re-accreditation fee. Do we want to pursue with re-accreditation?? Carolyn Wallace made a motion that we pay our \$1200 re-accreditation fee to keep our SAFE Community status in Madison County. Pat Ballard seconded the motion to pursue our SAFE community designation. Motion approved. No opposition. The new re-accreditation status will be good for 5 years once again.

Falls Coalition joining in MCSC structure – Lloyd stated that we have worked with falls prevention for years. Body Recall was huge, but went away. We still have a huge need for falls prevention. We had 3 senior health fairs last year in our community. Carolyn Wallace has worked on these health fairs along with 2nd Sunday and she is the "Falls Champion." Carolyn is very busy with the teaching and holding classes aspects of Falls Prevention, but needs help with communication. Body Ready is for fall prevention and recovery. Hundreds of

students are participating. It's based on Body Recall, but using evidence-based information. Ken Clark made the motion to join the Falls Task Force with the Madison County Safety Coalition. This motion was seconded by Pam Francis. Motion approved. No opposition.

Maternal Child Health (MCH) Packages – Lloyd stated that MCHD nurse April Whitaker is in charge of our Maternal Child Health program. We do have a program known as “Cribs for Kids.” If you know of a family that can't afford a safe crib for their infant, we do have a program that can possibly provide a pack 'n play to the family. We have talked about SAFE SLEEP many times in Child Fatality Review and we know the importance of having the infant sleep in a crib and not with the parents. If you are interested in finding out more about this program, call April Whitaker at 859-626-4228. The Safe Sleep contact number is 859-228-2059. (Lloyd's #)

Child Passenger Safety Updates – Becky stated that due to Kelly Owens leaving the health department; Lloyd and Becky have been the only CPS trained employees at MCHD to install car seats. Luckily Jenilee Kenyon – MCHD preparedness coordinator has just completed the training and is now CPS certified. Our new health educator – Codi Foley is signed up for CPS training the end of April. MCHD, along with KSP and White House Clinic (for their patients only) currently install car seats in the county. We have seen a slight decline in the number of car seats that we are installing because we now charge a \$40 FIRM cost for the car seats. Due to citizens taking advantage of “Free” car seats, we can no longer provide car seats for free or for a donation.

Safety City Updates / Child Fatality Review – Becky stated that Safety City is open and ready for more kids! We had nearly 1000 Madison County kids come through last fall and we are hoping for the same or more again this year. We would love to get the 3rd graders out to Safety City in the next couple of months. There are still several elementary schools that haven't taken advantage of the \$100 per school donation from the MSCS that can help defray transportation costs to Safety City. The chance to use this money will expire at the end of this school year. We currently have Waco Elementary Kindergartners signed up to come to Safety City on May 12 and are in the process of scheduling a group of 3rd graders from Roundstone Elementary in Rockcastle County. The Child Fatality Review Board did not meet in January because according to Dep. Coroner Carlos Coyle, we did not have any Madison County Child Fatalities to review for the last six months - which is wonderful. Depending on Jimmy's and Carlos's decision, we made hold a Child Fatality Review Board meeting fairly soon due to the recent suicide of a 17 yr. old local high school student.

KOHS Safety Summits – Lloyd stated that the Kentucky Office of Highway Safety will hold a Safety Summit in Morehead on June 10-11, 2015. This summit will be a time for CPS technicians to get their needed CEUs. For more information on this summit visit: <http://transportation.ky.gov/highway-safety/pages/default.aspx>

Coalition/Member Updates/Reports – Pat Ballard talked about Creative Expressions which was held in March. This program focuses on youth drug prevention and giving kids alternative fun things to occupy their time. Pat stated they had a church full of people and lots of activities for the kids. Lloyd and Elaine discussed that Ghost Out was canceled this year due to the death of a Madison Southern High School shortly before the day the program was set to occur. Elaine thanked everyone for all the hard work that went into planning the Ghost Out program this year and looks forward to trying again next year. Lloyd stated that the Community Health Assessment meeting will be held on Thursday, April 9, 2015 at the First Christian Church in Richmond from 8am-11:30am. This will be the first of 2 CHA meetings. We invite all community partners to join us for this very important meeting. We will be sharing the results from the recent Madison County Health and Safety

survey. Chief Jim Cox shared that the Madison County Fire Department just hired 3 new firefighters and they look forward to getting them oriented. Carolyn Wallace stated they will be having an upcoming Falls Prevention meeting at the Woodman of the World Lodge in Berea. Willard Reardon stated that he is back in Public Relations with the Madison County Sheriff's office. If anyone is in need of PR from the Sheriff's office – contact Willard at 859-408-2305. Becky and Trooper Robert Purdy are in the planning phases of trying to get another “Alive @ 25” class together. This class which was held last year at Safety City in June 2014 had about 24 local teens that either had just gotten their permit or drivers license. This class was a huge success as it focuses on the consequences of drinking and driving, texting, and many other risky behaviors. We hope to have more information on this class very soon! Ken Clark announced that Berea PD will be having a run at Farristown on April 11. Check out Berea PD's Facebook page for more info. There will be a fun walk for kids. Tickets are \$25 and go to a great charity! Elaine announced that the ECU BSN students will be holding their annual Hispanic health fair at Tates Creek Baptist Church in north Richmond on Friday, July 17 from 4-8pm. Lloyd discussed Berea is trying to become a trail town and is looking at safety. Age Friendly Berea – AARP – Jeff Ruben is the contact. This group is looking at transportation for the elderly. The Madison County Safety Coalition will be providing free bicycle helmets for the Pack the Track diabetes event on April 9 at ECU. Cooper Clayton classes will begin on April 9 at the health department in Richmond. If you know anyone that wants to quit smoking, they can contact the health department at 859-228-2044 for more info on these classes. Discussion occurred regarding the pulling of trailers by commercial and non-commercial operations and the legalities that go along with it. Marty Hensley discussed that motorcycles are out – please be aware of them.

NEXT MEETING: TBA

Minutes Submitted Respectfully By: Rebecca Colligan, RS



Madison County Safety Coalition Meeting Minutes

August 18th, 2015 – 1PM – Safety City, Richmond, KY

Members Present: Lloyd Jordison (MCHD), Becky Colligan (MCHD), Bill Suters (Citizen), Marty Hensley (MCHD), Jenilee Kenyon (MCHD), Pam Francis (MC Extension Office), Genia McKee (KY Safe Community, KIPRC, KSPAN), Shannon Elkins (MCHD/EKU), Cathy Seals-Mosier (Madison County Schools), Jake Reed (Berea Police Dept.), Jeremy Slinker (KSP), Christopher Crockett (KSP), Codi Foley (MCHD).

Introductions: Everyone introduced themselves and told their position/place of employment.

SAFE COMMUNITIES AMERICA – Lloyd explained that he is currently working on the Safe Communities America re-accreditation application. The fee has been paid for this. Shannon Elkins, EKU MPH student who is currently interning at MCHD talked about her role in working on the Safe Communities America application. She asked several questions to the group related to the application such as transportation driving classes/workshops offered in Madison County, Fall Prevention sources, Poison Prevention, Drug Prevention, Workplace Safety, Violence/Suicide, etc. Genia McKee discussed the Safe Communities America Conference that she and Lloyd attended. This conference is put on by the National Safety Council which focuses on safety and injury prevention. She stated that the conference was a wonderful learning opportunity for all of those who work in the safety field. She also explained that the "Kentucky Project" has a goal to get 50% of the counties in Kentucky designated as a Safe Community.

RICHMOND PEDESTRIAN PROJECT WITH KIPRC/SAFE STATES ALLIANCE – Lloyd talked about the Richmond pedestrian project and the progress that this group is making. This group has decided to distribute surveys dealing with distracted walking. Printed material will be distributed to all businesses on the by-pass. The hope is that EKU Public Health students will be helping us complete this project goal of –KEEPING PEDESTRIANS SAFE.

CHILD PASSENGER SAFETY/SAFETY CITY/CHILD FATALITY REVIEW UPDATES – Becky Colligan talked about the Child Passenger Safety program at MCHD. She stated that MCHD currently installs car seats and booster seats by appointment at the Berea Health Department. MCHD does not have set days that installations are done; they install when it is convenient for the individuals making the appointments and when it works with MCHD employee schedules. She stated that they do have low cost car seats and booster seats available – but we do not have any free car seats. She also stated that MCHD has had LOTS of calls regarding the Booster Seat Law – which was passed in June. This law states that a child must remain in a booster until they are 4'9" or 8 years old. There was much confusion over this new law, but the questions and calls have slowed down. Becky stated that preparations are being made to Safety City right now to get ready for the kids to be coming very soon. She added that much cleaning and prepping of the grounds was currently going on to prepare for the upcoming school year. She stated that 1,373 kids came through Safety City last year, and we hope to top that number this coming year. The Madison County Child Fatality Review team met on July 30 and had 2 child deaths to review.

FALLS COALITION – Codi Foley talked about the Falls Coalition which is led by Carolyn Wallace. This group meets monthly at the Woodmen of the World lodge in Berea. The purpose of this group is to bring more awareness to the community regarding falls. This year's Falls Prevention Awareness Day event will be at the Folk Center in Berea on September 23rd (THE FIRST DAY OF FALL) from 9am – 12pm. Everyone is welcome; however you need to register if you are coming and that you want lunch by September 12th to Berea Parks and Recreation.

SAFE HAVENS – Jenilee Kenyon talked about the Safe Haven program in Madison County. The goal of the Safe haven program is to have a safe place for people to take shelter during severe (tornadic) weather. The churches currently participating in the Safe Haven program are Kirksville Baptist Church, Flatwoods Christian Church, Union Church, and Westside Baptist Church. Jen has worked with the National Weather Service to differentiate the difference to everyone between watches and warning and when the Safe Havens need to be unlocked and operational. This alleviated the problem of church staff having to unlock the building when only a watch was issued and usually no one would show up.

ALWAYS BUCKLE UP CHILDREN IN THE BACKSEAT – Lloyd discussed that Berea College BSN students as part of their service learning project is doing surveys as to whether kids are in the front or back seat during parent drop-off and pick-up. Findings continue to show that kids are more likely to be in the backseat when leaving school than when dropping-off. All new ALWAYS BUCKLE UP CHILDREN SIGNS have been purchased for all of the schools. Thanks to Phillis and Children's Champion there has been an ALWAYS BUCKLE UP CHILDREN IN THE BACKSEAT Billboard on Big Hill Avenue beside the railroad tracks for the entire month of August.

COMMUNITY ASSESSMENT AND COMMUNITY HEALTH IMPROVEMENT PLAN (CHIP) – Lloyd talked about the current work being compiled on the Community Health Improvement Plan and the Community Health Assessment. Out of the community meetings for the CHIP and CHA, 3 groups have emerged – Substance Abuse (led by ASAP Board and MCHD), Mental Health (led by Pregnancy Help Center), and Healthy Lifestyles (led by Pioneering Healthy Communities). Lloyd stated that the Healthy Lifestyles group will be meeting at the Madison County Extension Office on August 26 and 3pm. Items to discuss will include diabetes, physical activity, and nutrition. The ASAP Board is currently working on 2 of the strategic goals for substance abuse while the Madison County Health Department will work on the needle exchange program. The Faith Task Force is holding a dinner on August 27th Honoring Youth Workers. Everyone is welcome to attend. Creative Expressions continues to work with Madison County youth. Lloyd explained that we will again this year work with ECU BSN students on the "Re-think Your Ride" program with the 3 public high schools. This program focuses on distracted driving and the consequences. Lloyd mentioned the Boones Trace Trail and the work that is being done on that. This trail stretches through a large portion of Madison County and many people are excited about the outcome of this trail. Lloyd explained that we are currently doing Age-Friendly surveys for Berea residents right now. Residents may fill out a paper copy or take the survey online. These surveys need to be completed by September 1 or a little thereafter and returned to City Hall. ***Mantherapy.org*** is a great new resource that Lloyd discussed that is specifically for men and talks about suicide, depression, etc.

DATA – Lloyd talked about the 2nd quarter seat belt surveys that were recently completed. Various locations were observed and surveyed in Richmond and Berea. An 89% correct usage rate was observed for drivers – which we are very proud of, but hope to see go higher. Nationally, heat related deaths of children in cars for 2015 is 14 to date.

INDIVIDUAL UPDATES – Jake Reed with Berea Police stated they have a link to the Age Friendly Berea survey on their Facebook Page. Chris Crockett with KSP talked about their “Move Over or Get Pulled Over” project with KSP. Pam Francis from the Madison County Extension office announced that the Grandparents as Parents Conference will be on September 9th at the Extension Office. Pam has several groups that she facilitates at the Extension office including “Small Friends”, “Grandparents as Parents”, and the “Parenting Class.”

NEXT MEETING: October 20, 2015, 1:00 PM @ Safety City

Minutes Submitted Respectfully By: Rebecca Colligan, RS



Madison County Safety Coalition Meeting Minutes

November 17th, 2015 – 1PM – Safety City, Richmond, KY

Members Present: Lloyd Jordison (MCHD), Becky Colligan (MCHD), Bill Suters (Citizen), Marty Hensley (MCHD), Jenilee Kenyon (MCHD), Pam Francis (MC Extension Office), Cathy Seals-Mosier (Madison County Schools), Codi Foley (MCHD), Jaime Stewart (Richmond Head Start), Susan Patton (Richmond Head Start), Mary Ann Sowers (Richmond/Bellevue Head Start), Elaine Waters (EKU), Shawn Sandlin (Berea Fire Dept.), Tony Young (Federal Hwy. Administration – KY Division Office), Michael Stotts (Madison County Sheriff's Office), Ashley King (Madison County 911), Mitch Brown (Richmond Area Ministerial Assoc.), Sean Quinlan (Madison Southern High School), Steve Sparrow (KIPRC/KSPAN)

Introductions: Everyone introduced themselves and told their position/place of employment.

Time of Prayer and Remembrance for Officer Daniel Ellis, RPD, and our Law Enforcement Families: Mitch Brown, Madison County Safety Coalition member, Richmond Ministerial Association representative, and retired Richmond Police Officer led the group in a special prayer and time of remembrance in honor of Richmond Police Officer Daniel Ellis who was recently lost his life in the line of duty. Lloyd stated that we honor all of our First Responders and we all mourn together in this loss.

ISO Fire Ratings in our Community: Shawn Sandlin, Berea Fire Chief discussed Berea's recent ISO audit. He explained how ISO affects insurance rates. ISO does an audit for every fire department. They evaluate risks, determine whether you have the correct equipment to perform the job, pump capacity, hose testing, etc. They also evaluate if the department has reserve engines on hand in case one of the fire engines goes down. Training among the fire personnel is very important and is closely monitored by ISO. The Berea Fire Department received a 32.58 out of 50 score – which is definitely something to be proud of. Personnel shortage is the biggest problem for the Berea Fire Department. They are currently 7 points away from having a class 2 – which is awesome. Currently, Berea Fire Department has only 18 firefighters compared to Richmond's 57 firefighters.

Smart 911 system: Ashley King gave information about the new Smart911 system that allow for people to give important emergency information on a secure website that would be used by MC 911. Website: www.smart911.com. This site allows for a person to share important medical information, contacts and even directions to a home so that the 911 dispatch can help our first responders what they will be encountering upon arrival of the scene. This is a free service that is open to anyone. It will be especially helpful for cell phone users. Some people even up load photos of their children which can be accessed if they go missing. Note that all the information is only available if you call from your phone. No one can see it unless you call in using that phone number.

National Incident Management Responder Training: Tony Young with the Federal Highway Administration gave statistics on how many police officers, firefighters, towing personnel, etc. are killed yearly in the line of duty. He also discussed a wonderful FREE training that is coming up – National Incident Management Responder Training. He also mentioned that the Kentucky LifeSavers Conference will be held in March at the Galt House.

MC Safety Coalition Business: *Re-accreditation* – Lloyd stated that re-accreditation for our “Safe Communities” status has been completed and sent to the National Safety Council. This is a huge accomplishment and the next step for us as a coalition will be to celebrate this accomplishment.

Coordinator Role – Jenilee Kenyon, Preparedness Coordinator for Madison County Health Department was introduced to the Coalition as the new Madison County Safety Coalition Coordinator. Lloyd will be stepping down from this role – but will work closely with Jenilee to ensure that all of the good work done by our coalition will carry on. Jenilee introduced herself to the group and talked about one of the projects that she has spent a lot of time on – Tornado Safe Havens. This project involves several area churches around the county that open their doors during Tornado warnings for sheltering purposes for those who do not have proper shelter at their homes. She also talked about how she can communicate with the National Weather Service which greatly improves communication efforts. Jenilee also discussed the yellow-dot program which is a sticker that can be placed on your car that allows first responders important medical information on individuals that could help them save their life. We welcome Jenilee to this new role.

Greenways and Trails – Lloyd discussed the Greenways and Trails project which involves developing trails to connect KY counties for bicycling, walking, etc. This is tied in with us becoming a 501 C-3. Lloyd stated that he would like for the Madison County Safety Coalition to facilitate the Greenways and Trails project. The motion was made to pursue this partnership by Elaine Waters and seconded by Mitch Brown for the Madison County Safety Coalition to take on the Greenways and Trails project.

Safe Communities America Updates: Steve Sparrow explained that Madison County is part of the Pan Pacific Safe Communities Network. He discussed ensuring that this network is recognized by the national world health organization. KY updates – Jessamine is now an accredited SAFE Community along with Murray, Western KY, and a letter of intent was placed by Louisville/Jefferson to become Safe Communities. Lexington and UK has also announced that they will pursue Safe Community Accreditation. If all of these become accredited, 40% of the KY population will live in a SAFE Community.

Richmond Pedestrian Project: Lloyd discussed the progress of the Richmond Pedestrian Project and the 2 recent pedestrian deaths that we have had in Madison County. This continues to be an ongoing issue for our county.

Falls Coalition Updates: Codi talked about the Falls Prevention Day held at the Folk Center this year. She stated that the spring event will focus on bringing in more partners and getting more fall prevention info out to our community.

Coalition/Member Updates:

-Lloyd stated that the Faith Task force is planning a meeting in front of the Richmond Court House on January 23, 2016 at 1pm. They are calling on all faiths in the community to come out and say WE NEED HELP and talk about what we can do about crime, pedestrian deaths, etc. It will be held rain or shine.

-Friends of Boones Trace – Meeting will be held tonight – Nov. 17th

Marty Hensley – Most motorcycles have been put away for the winter, a few still trying to get in last minute rides. BE SAFE!

NEXT MEETING: TBA

Minutes Submitted Respectfully By: Rebecca Colligan



Madison County Falls Coalition Meeting Minutes

April 8th, 2015, 12:15pm– Woodmen of the World Lodge, Berea, KY

Members Present: Lloyd Jordison (MCHD), Carolyn Wallace (Fall Wise), Codi Foley (MCHD), Susan Garza (Berea PD), Randy Lawson (Social Worker, Madison Towers)

Introductions: What angles does your specific organization have in regards to falls?

Carolyn discussed that with the Body Recall program no longer available, that it is important to still keep the falls program going. Susan added the benefits of having a program or classes on body movement can be very beneficial (example scenario in which an elderly woman fell and was able to use arm strength to get up the stairs to summons help).

Lloyd spoke about injuries with the aging population due to falls and that fall prevention needs to be focused on. His hopes are for the fall coalition to be able to provide structure to keep going, so programs (i.e. - fitness) can continue to help with fall prevention. He stated that it is important for the program to sustain momentum regarding fall issues and to get information out to the community.

****Coalition Business – Purpose of the Falls Coalition.** It was agreed that the common goal of this coalition is for Madison County to be a fall resistant community. ****As this is the formative stage of the coalition, solidifying the purpose will be kept open as to allow more discussion and input to take place in regards to this area. Listed below are ideas that were voiced as to how the Falls Coalition can strengthen, grow, and meet goals:**

- 1) Share resources and get the information out into the community
- 2) Promote and support each other's efforts
- 3) Develop a community network
- 4) Strengthen resources

5) Promote Fall Prevention Awareness Day*

*Fall Prevention Awareness Day- Wednesday, September 23rd 2015. Main issue= getting people there. Discussion on promoting this event: move it to Richmond (follow-up: it will stay in Berea this year), collaborate with the YMCA, City of Richmond, or Parks & Rec's "Senior Shindig" event. Lloyd advised that to begin the promotion of this event, we must start with names/contacts, a distribution list, information output (i.e. - website, Facebook, Pathways, email), and he noted the Falls Coalition could possibly 'piggy back' off the Safety Coalition.

**6) Bring awareness in the business community about the cost and effects of falls, with the goal to rally support for falls, and eventually other community health issues as well.

Future Business:

- Develop minutes for meeting
- Reach out to our current contacts and ask for their thoughts/input
- Set up recurring dates/times for Falls Coalition meetings (2nd Wednesday of each month, 12:15pm @ Woodmen of the World Lodge in Berea).
- Carolyn will contact the Acton Center to set up falls prevention day.
- Brainstorm new ideas for 2nd annual event
- Lloyd will contact Dr. Turner
- Talk with Berea college regarding healthy snacks and involvement in the event
- Raise awareness within community & businesses regarding falls
- Randy wants to find more Coalition members from within the community
- Make special effort to invite City/County elected officials to the program

Next meeting: Wednesday, May 13th, 12:15pm @ Woodmen of the World Lodge, Berea

Meeting adjourned: 1:25 pm

***addendum 04/27/2015*

Minutes Submitted Respectfully By: N. Codi Foley, Health Educator II



Madison County Falls Prevention Coalition Meeting Minutes

May 13th, 2015, 12:15pm– Woodmen of the World Lodge, Berea, KY

Members Present: Lloyd Jordison (MCHD), Carolyn Wallace (Fall Wise), Codi Foley (MCHD), Susan Garza (Berea PD), Jenny Jones (Berea Parks & Rec), Vicki Chasteen (WOW)

Introduction: Carolyn addresses the question: "How does a serious fall Impact your organization?"

- Jenny stated that the parks and recreation department adapt programs and events for those who have suffered falls or are in wheelchairs (i.e. - accessibility).
- Codi mentioned that as a community organization, it is important to ensure awareness and accessibility within the community regarding the area of falls & safety.
- Lloyd talked about the Safety Coalition and that with the falls coalition reemerging; there are many partners that are interested in this effort.
- Susan is here because of the Safety Coalition on behalf of Ken Clark
- Carolyn stated she teaches body ready for fall prevention and recovery and has never had a serious fall in class. She wants to spread the wealth and have positive statistics in Madison County in regards to falls.
- Vicki is a member of the Woodmen of the World and did body recall classes after a car wreck and wants to help with this coalition any way she can.

Old Business:

- Goal of Falls Prevention Coalition is to help Madison County be a fall resistant community.
- Went over 6 main points bulleted from minutes from last month's meeting

New Business:

- Carolyn stated that we needed to look for an emcee for the event and that she would contact Chad Hembree (Hospice) to see if he would fill that role.

- Point made that building awareness is important for the purpose of this coalition. Statistics are also important because it shows what we do right and what we can do better. Statistics also keep us “in the know”. Carolyn asked Lloyd about how falls data is counted. He said the data is monitored through hospital and medical databases although not all falls get recorded as a fall.
- Carolyn asked who was good with data and Lloyd said he would follow-up with KIPRC (Ky. Injury prevention & research center) to get current data on falls.
- Carolyn: Asked what the policy in Madison County is in regards to fall (this is something missing from our goals/objectives). Keeping aware of policy is important in order to eventually influence them
 - Lloyd: ADA & codes
- Ideas on gaining members of this coalition:
 - Lloyd stated that it takes time to make contact and talk to people
 - Susan: maybe a press release on coalition to gain new members
 - Jenny & Lloyd: meet with Katie Heckman from St. Joseph Berea on having someone become part of the coalition
- Carolyn said that sharing each of our skills and expertise is a good thing for the coalition to progress.

Clarification of minutes:

Susan was misquoted in the previous month’s minutes so an agreement was made to send the minutes to the members who are present at each meeting for revision and approval, and then they will be sent out to the distribution list. People on the distribution list are Lloyd’s contacts from the Safety Coalition as well as those who come to these meetings.

Falls Prevention Day

- Carolyn: secured the Acton Folk Center
- Lloyd: Spoke with Dr. Turner (EKU Public Health), and said the students won’t be having their class with the Health Department this year, but they still might participate (have educational tables, etc.), they just can’t be in charge of it. He suggested that maybe some of the nursing students can work at the event too

- Carolyn: has a list of names from last year, questioned: “Who in our County can help and/or is interested?” (i.e. - vision, pharmacy (Jim Knight), home modification, etc.)
- Jenny suggested having a massage therapist or chiropractor , she said she will contact Robyn Brewer (a massage therapist @ Chiropractic Health Solutions)
 - Carolyn: issue is the number of chiropractors in Madison Co., how many can we fit? We want all these businesses to be accessible for our participants
 - Susan “ maybe we can have businesses work together rather than compete”
 - Jenny: Not confident that businesses would be willing to work together a tables
 - Carolyn: last event there were speakers and presentation tables, we could communicate about who would be good reps for these areas
- Lloyd: maybe get a physical therapist involved (maybe draw in people from Richmond)
- Lloyd: Maybe could get businesses to sponsor us
- Carolyn: Do we need sponsors, and if so, what for? Need to look at cost
 - We need to target businesses we want to be part of this
- Jenny: touch base with the new director of the Senior Center about food for event
- Lloyd: We can discuss the promotion of the event later. Brought up donations/door prizes: we don’t need to solicit, the people who come may provide
- Vickie: can help organizing door prizes and will address the WOW tonight in regards to a donation for food
- There will be no June meeting, Carolyn will be out

Next meeting: Wednesday, July 8th, 12:15pm @ Woodmen of the World Lodge, Berea

Meeting adjourned: 1:25 pm

Minutes Submitted Respectfully By: N. Codi Foley, Health Educator II



Madison County Falls Prevention Coalition Meeting Minutes

July 8th, 2015, 12:15pm– Woodmen of the World Lodge, Berea, KY

Members Present: Lloyd Jordison (MCHD), Carolyn Wallace (Fall Wise), Codi Foley (MCHD), Susan Garza (Berea PD), Jenny Jones (Berea Parks & Rec), Shannon Elkins (EKU intern), Katie Heckman (Saint Joseph- Berea)

Introduction: The meeting opened at 12:15 by Carolyn Wallace

- Why do we care about falls? Name an experience you have had with a fall (personal or other).
- Presentation of falls data collected by Shannon Elkins, EKU intern (Information packets distributed).

Lloyd- motion to approve last meetings minutes

Jen- second

Everyone in favor

New Business:

- Lloyd to update email distribution list to include everyone in Falls Coalition
- Carolyn suggested making a flyer with information about the Falls Coalition/ Falls Prevention Awareness Day, to distribute at Health Fair
- Lloyd spoke briefly about KSPAN
- Falls & Osteoporosis Summit held by KSPAN is coming up, information will be sent to those interested in attending

Old Business:

- Health Fair: Friday, July 17th 4:00-8:00pm at Tates Creek Baptist Church. MCHD will print out falls checklist questionnaire that Carolyn will be presenting at Fair.
- Fall Prevention Awareness Day :
 - There are 2 meetings left until the event, confirmation of date September 23rd, time (adjusted from last year) to be 9:00am-12:00pm with lunch served after

- RSVP's will be necessary to provide meal (Jenny & Parks/Rec Berea will take RSVP's)
- Saint Joseph, Berea would like to participate again this year
- Ideas on who we would like to attend this yr:
 - Civic clubs
 - Senior center
 - Invite people/businesses from all of Madison County, not just Berea
 - Lloyd suggested making flyers and distributing to different organizations. He also said the Berea College BSN class wants to participate and could possibly talk about medications and do assessments. He also mentioned possibly inviting the homemaker group (from the Extension office), and Lions club (for vision screenings)
 - Shannon will contact the Environmental Health Club from ECU to see if they are interested in coming
 - Katie has a list of organizations that she will distribute information to and will also secure Scott with Senior Renewal
 - Jenny said Chiro Health Solutions want to present
 - Other ideas on who to invite: Physical Therapists, massage therapists, nutritionist, Hospice, Mepco, hearing screener
- The event will need a PA system (Jenny will secure)
- Katie will work to get an article in the newspaper (Berea Citizen) & community calendar
- Carolyn, Codi, & Lloyd will work on flyers
- Presenters need to be finalized within 2 weeks

Meeting adjourned: 1:45 pm

Next meeting: Wednesday, August 12th, 12:15pm @ Woodmen of the World Lodge, Berea

Minutes Submitted Respectfully By: N. Codi Foley, Health Educator II



Madison County Falls Coalition Meeting Minutes

August 12th, 2015, 12:15pm– Woodmen of the World Lodge, Berea, KY

Members Present: Carolyn Wallace (Fall Wise), Codi Foley (MCHD), Jenny Jones (Berea Parks & Rec), Katie Heckman (Saint Joseph- Berea), Michele Pekola (Chiropractic Health Solutions), Michelle Judy (Heartland Rehab)

Introduction: The meeting opened at 12:20 by Carolyn Wallace

Carolyn distributed and discussed the fall risk assessment checklist she uses to help determine someone's risk of a fall.

Introductions of attendees

Katie moved to approve minutes

Jenny seconds motion

New Business: The Falls Coalition has been invited to set up a table at the First Friday event in Berea on September 4th that is put on by Age Friendly Berea and the contact is Jeff Rubin

Old Business:

- Health Fair: Held July 17th at Tates Creek Church in Richmond. Carolyn discussed the activities she conducted at the falls prevention demonstration area.
- Fall Prevention Awareness Day :
 - Woodmen of the World will be donating \$100 towards the event (per Vicki Chastain)
 - Presentations and tables: Need to create a list of businesses/organizations coming and a description of their specialties (should be completed by the next meeting).
 - Updated presenters: Amanda Rist (UK Trauma Program), Carlos Coyle (Madison Co. EMS), Heartland Rehab (represented by Michelle Judy-present), Chiropractic Health Solutions (represented by Michele Pekola-present).

- Saint Joseph has agreed to conduct blood pressure checks.
- Saint Joseph will provide cost of catering.
- Discussion on possibly bringing in local fire department to discuss fire safety/smoke detectors, etc. General consensus was that they could be contacted to see what kind of information they could possibly provide for the event (literature, etc.).
- Carolyn inquired about MEPCO attending
- Still need someone to address osteoporosis (possibly White House Clinic)
- Michelle Judy will check on home modifications contractors to attend event
- Discussed current presenters
- Flyers, when produced (Carolyn, Codi, & Lloyd), will be emailed out to the Falls Coalition distribution list and from there the event information will be distributed further by the members via email blasts, etc.
- Discussed provided bags for participants to use to put and information or goodies they may receive from the vendor tables

Future ideas: How will we coordinate efforts when the event is over?

Meeting adjourned: 1:40 pm

Next meeting: Wednesday, September 9th, 12:15pm @ Woodmen of the World Lodge, Berea

Minutes Submitted Respectfully By: N. Codi Foley, Health Educator II



Madison County Falls Coalition Meeting Minutes

September 9th, 2015, 12:15pm– Woodmen of the World Lodge, Berea, KY

Members Present: Carolyn Wallace (Fall Wise), Codi Foley (MCHD), Jenny Jones (Berea Parks & Rec), Michele Pekola (Chiropractic Health Solutions), Vicki Chasteen (Woodmen of the World)

Introduction: Reminder that the Falls and Osteoporosis Summit is coming up Thursday, September 10th in Shelbyville.

Jenny moved to approve minutes

Codi seconds motion

Fall Prevention Awareness Day updates:

- As of today, Jenny has 34 people signed up and will add those that are on the schedule to present or have tables. Will also type up alphabetical list of those registered for easier check in on event day.
- To keep track of those who are registered for lunch, name tags will be made with an identifiable marking
- Lisa Edwards from the Senior Citizens Center will be helping with registration
- Fall risk surveys will be distributed at the sign-in table
- Discussed door prizes and when they would be distributed during event
- Discussed lunch at event
- Carolyn went over vendors with tables
- Jenny will ask Berea Tourism if they would like to attend
- Jenny will take care of the sign out front of the event

Meeting adjourned: 1:00 pm

Next meeting: Wednesday, October 14th, 12:15pm @ Woodmen of the World Lodge, Berea

Minutes Submitted Respectfully By: N. Codi Foley, Health Educator II

Appendix D: Program Photos

2015 2nd Sunday Madison County

Madison County Safety Coalition



Madison County Diabetes Coalition (and Friends)



Madison County Falls Prevention Coalition



ReThink Your Ride 2015 Madison Central High School



Courtney Isaacs, a Madison Central High School senior, attempts to manipulate a driving simulator in front of her peers while she receives text messages on her phone and is timed by a Department of Highway Safety worker. The simulator was brought to the school as part of the Rethink Your Ride program hosted by the ECU nursing program, the Madison County Health Department, and other partners.

Students listen to a Department of Highway Safety worker in front of a rolling vehicle simulator as he describes the difference between seat belt wearers in accidents and those who don't buckle up.



Austin Pay, a Madison Central High School senior, spins a wheel of chance Tuesday during a Rethink Your Ride program, to simulate the chance drivers take when driving distractedly.

A Madison Central High School student attempts to maneuver a tricycle through a course while texting to simulate texting and driving Tuesday during a Rethink Your Ride program.



Madison County Tornado Safe Haven 2015



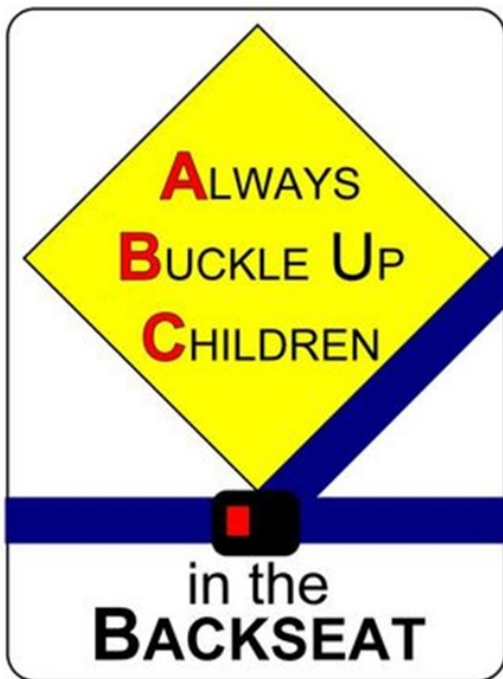
Madison County Tornado Safe Haven

Locations:

Flatwoods Christian Church
Kirksville Baptist Church
Union Church
Westside Baptist Church



Always Buckle up Children in the Backseat Program Madison County Elementary Schools



Signage that is placed at all schools and around the community.



Buckle up Bear



Above: ECU BSN students with Buckle up Bear at Kingston elementary school.
Below: Kentucky State Police Trooper during a program at Waco elementary school.



Appendix E: Letters of Support



MADISON COUNTY HEALTH DEPARTMENT

To protect, promote and improve the health of our community.

216 BOGGS LANE • PO BOX 1208 • RICHMOND, KY 40476-1208
(859) 623-7312 • (859) 626-4298 FAX

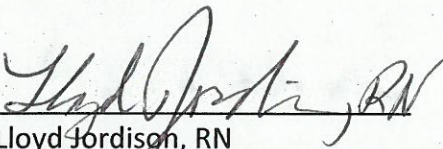
March 23, 2015

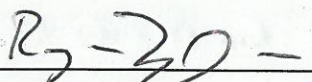
Safe Communities America
National Safety Council
Attention: Director
1121 Spring Lake Drive
Itasca, IL 60143

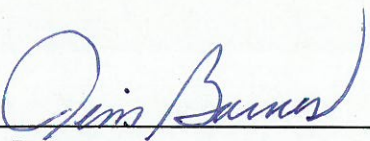
Please accept this letter as notification that the Madison County Safety Coalition and Madison County Health Department intends to submit an application for re-accreditation of Madison County, Kentucky that includes the City of Richmond and the City of Berea for Safe Communities America. We are constantly striving to keep our community as safe as possible by focusing on our mission of "Creating a Culture of Safety".

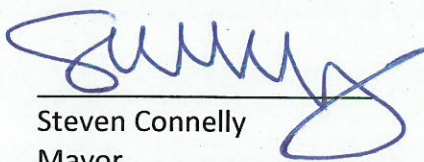
Preventing and reducing injuries in Madison County, the City of Richmond, and the City of Berea, Kentucky is an essential objective to the Safety Coalition here in Madison County. We have numerous partnerships throughout the community that allow us access to resources in order to make our community a safer place. We wish to continue our efforts as a safe community through the Safe Communities America Network. We appreciate how our county has benefited through our designation as a Safe Community. Please contact us if there are any questions.

Thank you,


Lloyd Jordison, RN
Coordinator
Madison County Safety Coalition


Reagan Taylor
Judge Executive
Madison County, Kentucky


Jim Barnes
Mayor
City of Richmond, Kentucky


Steven Connelly
Mayor
City of Berea, Kentucky



Center for Excellence in Learning through Service (CELTS)

CPO 2170, Berea, KY 40404

Phone: (859) 985-3605

Fax: (859) 985-3809

Email: Ashley_cochrane@berea.edu

December 7, 2015

Carrie Nie
Director
Safe Communities America
National Safety Council

Dear Ms. Nie,

I am writing to support Safe Communities of Madison County's application to become recertified as a member of the Safe Communities America Network.

The Madison County Safety Coalition and the Madison County Health Department are key partners in the work of the Center for Excellence in Learning through Service (CELTS) at Berea College. As the center of student community engagement at Berea College, CELTS programs rely on collaborations with community-based partners to provide Berea College students with opportunities to serve our community and to learn from the work of community-based organizations and community leaders.

Berea College students in service-learning classes from a variety of disciplines, including Communication Studies, Computer Science, Health and Human Performance, and Nursing, have partnered on projects related to the work of Safe Communities. Projects have included the design of marketing materials for Safety City, including a logo and publicity materials; exploration and development of a database for a community resource directory; and the gathering of seatbelt usage data. Through these projects, Berea College students have learned about various aspects of building and maintaining a safe community.

In addition to these service-learning collaborations, Safety City and the Madison County Health Department have hosted internships and a student work-study position. These learning opportunities have provided students with extensive experience in injury prevention education through presentations at health fairs, creation of informational bulletin boards, and other educational outreach programs.

The work of Safe Communities Madison County has included efforts from Berea College students in ways that maximize resource sharing, while also educating college students about what it means to utilize community resources to build a safe and resilient community. Students learn about community infrastructure, public health education, developing collaborative networks, and specific interventions that promote safety and wellness.

These partnerships contribute to the learning and success of Berea College students. We at Berea College CELTS are grateful to be partners with Safe Communities Madison County.

With gratitude,

A handwritten signature in black ink that reads "Ashley Cochrane". The signature is written in a cursive, flowing style.

Ashley Cochrane
Director Center for Excellence in Learning through Service (CELTS)



November 30, 2015

Carrie Nie, Director
Safe Communities America
National Safety Council

Dear Ms. Nie:

It is my pleasure to write this letter of support for Madison County Health Department's application for recertification as a member of Safe Communities America Network.

Madison County's designation as a "Safe Community" helps to foster a collaborative spirit among most of the agencies and organizations dedicated to enhancing the quality of life in our community. The "Safe Community" effort has inspired many forums and events that have created synergistic partnerships within Madison County and we appreciate the determination of the Madison County Health Department in leading this initiative.

Madison County Schools has been able to partner in this initiative through the following events:

- Representative Membership on the Madison County Safety Coalition-The Safety Coalition coordinates local efforts to enhance safety and prevent injury. Membership on this coalition gives a voice to the schools and enhances the communication/education of the coalition's mission.
- Participation in Safety City-We worked with Madison County Health Education Coordinator to develop a curriculum that would align with our state health education standards for elementary students. Participation has significantly increased and the experience for children has been enhanced.
- ABC in the Backseat-This program has improved seat belt usage among elementary students and reduced the number of small children riding in the front seat of automobiles. Our elementary teachers have been committed to promoting the ABC message.
- Ghost Out-This event is very impactful for young drivers in our community. We currently use a rotation schedule that provides this to each high school in our system every 3 years.
- ReThink Your Ride- Increasing seat belt usage and decreasing cell-phone usage while driving are the goals of this program. It is promoted through our high schools and gets the message to our young people to buckle up and refrain from distracted driving.
- Health Fairs and Safety Fairs-Numerous health and safety fairs are conducted throughout our county each year. These are always a coordinated effort of health department, school system, Safety Coalition, first responders, local health organizations, and regional hospitals.

These are just a few examples of the collaborative efforts taking place in Madison County. We are supportive and appreciative of the work that has been done and value the relationships that have resulted from designation as a "Safe Community". We look forward to continuing those partnerships for years to come.

Sincerely,

A handwritten signature in blue ink, appearing to read 'D. Gilliam', is written over the word 'Sincerely,'.

David Gilliam
Chief Academic Officer

Appendix F: Madison County Injury Data



Kentucky Community Injury Profile

MADISON County Residents, 2010-2014

Prepared by
Michael Singleton, Wei Gao and Svetla Slavova
Kentucky Injury Prevention and Research Center
University of Kentucky
333 Waller Avenue, Suite 242
Lexington KY 40504-2915



To Obtain Injury Data for Your Community
Contact Steve Sparrow or Genia McKee

Steve.Sparrow@uky.edu
859-257-9484
Genia.McKee@uky.edu
859-323-0298
www.safekentucky.org

Methods

Hospital inpatient discharge data and emergency department visit data are collected by the Kentucky Hospital Association under contract with the Office of Health Policy (OHP) within the Kentucky Cabinet for Health and Family Services. Since 1996, KRS 216.2920-216.2929 (<http://www.lrc.ky.gov/krs/216-00/CHAPTER.HTM>) has required all non-federal Kentucky hospitals to report data on inpatient discharges to the OHP. The OHP began receiving emergency department and hospital-based outpatient data in 2008, including observation visits and outpatient surgical procedures.

For the purpose of this report we used the KY inpatient hospital discharge (HD) uniform billing electronic records from 2010 to 2014, and the electronic emergency department (ED) visits records from 2010 to 2014 from all KY general acute care hospitals. All personal identifiers were removed from the data sets by the maintaining agency before our receipt. Reported counts reflect the number of visits/hospitalizations. (This does not necessarily equal the number of persons injured because follow-up visits for a given injury could not be identified and removed from the datasets.) The report does not include Kentuckians who received care out-of-state, such as those treated at Cincinnati or Nashville facilities, nor does it include non-Kentuckians who receive injury-related care at Kentucky facilities. Please note that on the date this report was produced, October 20, 2015, the hospital inpatient and outpatient data sets for the years 2013 and 2014 were considered provisional by OHP. This means that if this report is reproduced at a later date, some numbers may differ slightly from those in the present version.

The hospital discharge data is coded according to the International Classification of Diseases, Clinical Modification, ninth revision (ICD-9-CM). The ICD system describes an injury using diagnosis codes and E-codes. An injury diagnosis code is a single code that describes the nature of the injury (e.g., fracture, open wound, etc.) and the body region (head, arm, skull, etc.). The KY HD and ED data systems allow the collection of up to 25 diagnosis code fields per visit. The first diagnosis code is called the principal diagnosis code. The principal diagnosis for a hospitalized patient is the primary physiological reason for the patient's hospital stay and is based on the clinical findings during a patient's stay. Therefore, it may differ from the initial justification for admission to the hospital. The principal diagnosis is not always the diagnosis with greatest contribution to the total cost or length of hospital stay. Other conditions are also coded in the remaining 24 diagnosis code fields in the HD/ED datasets and are called secondary diagnoses. Injury diagnoses should be supplemented (when circumstances of the injury are known) with additional codes called E-codes. The E-codes are separated into three groups: external-cause-of-injury E-codes, place-of-injury E-codes, and activity E-codes. The external cause-of-injury E-code is a single code that describes the mechanism of injury (e.g., fall, motor-vehicle collision, firearm, etc.) and the intent of injury (e.g., unintentional, assault, self-inflicted, or undetermined)*. The KY HD and ED electronic record systems currently support up to three designated E-codes fields. Based on our previous experience, on average, about 85 percent of the KY HD and ED cases with principal injury diagnoses are supplemented with valid external cause-of-injury codes.

The selection of the injury hospitalizations is based on the principal diagnosis code in the following ranges: 800–909.2, 909.4, 909.9, 910–994.9, 995.5–995.59, and 995.80–995.85.

The cases treated in KY ED are selected as injury cases if the principal diagnosis code is in the following ranges: 800–909.2, 909.4, 909.9, 910–994.9, 995.5–995.59, and 995.80–995.85, or a valid external cause of injury code is present.

* http://www.cdc.gov/nchs/data/injury/icd9_external.pdf

Definitions for selected mechanism of injury categories:

MVTC – Motor vehicle traffic crash. This includes crashes that occurred on a public roadway and involved at least one motor vehicle. All persons injured in MVTCs are counted here. Bicyclists and pedestrians who were struck by a motor vehicle would be counted here, but those who crashed on a public roadway without involvement of a motor vehicle would be counted elsewhere (see “Other pedal cycle” definition).

Struck by/against – Includes injuries due to being struck by, or striking against, an object or another person. This category encompasses a wide range of incidents. Examples include being struck by a thrown or falling object, colliding with or striking against an object or person, and being caught by or between objects. This category can also include intentional injuries such as fighting or assault by striking with an object.

Overexertion – Includes injuries occurring during activities involving lifting, pushing, excessive exercise or other strenuous body movements.

Other pedal cycle – Includes injuries involving riders of non-motorized pedal cycles, where the incident occurred either (a) off of a public roadway, or (b) on a public roadway without involvement of a motor vehicle or railway train. The category “Other pedestrian” is defined similarly.

Other transportation (“Other trans”)– Includes injuries involving railway, water and air transport; off-road transportation by motor vehicle, all-terrain vehicle, horse, or other mode of land transport; and traffic incidents involving certain kinds of non-motor vehicles such as animal-drawn vehicles and streetcars where there is no involvement of a motor vehicle.

Natural and environmental factors (“Natural/envir”)– Includes venomous animals and plants as the cause of poisoning and toxic reactions (e.g. bee/wasp stings and spider bites), other injuries caused by animals (including bites), lightning, storms, earth movements, exposure to excessive heat or cold, and more.

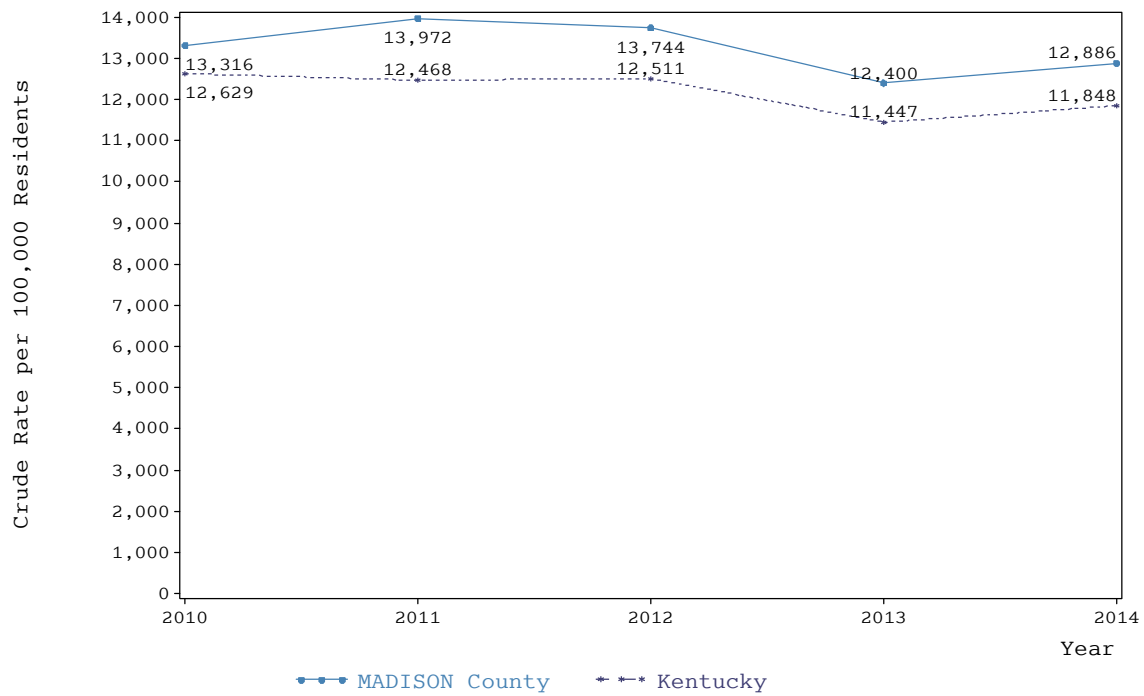
Poisoning – Includes exposures belonging to two general categories: “Drugs, medicinal substances, and biologicals” and “Other solids and liquid substances, gases, and vapors.” Agents of poisoning belonging to one of these two categories include prescription medications, illicit drugs, alcohol, cleaning agents, carbon monoxide, herbicides, and more.

Fire/burn – Includes burns and scalds resulting from fire, flames, and hot objects or substances.

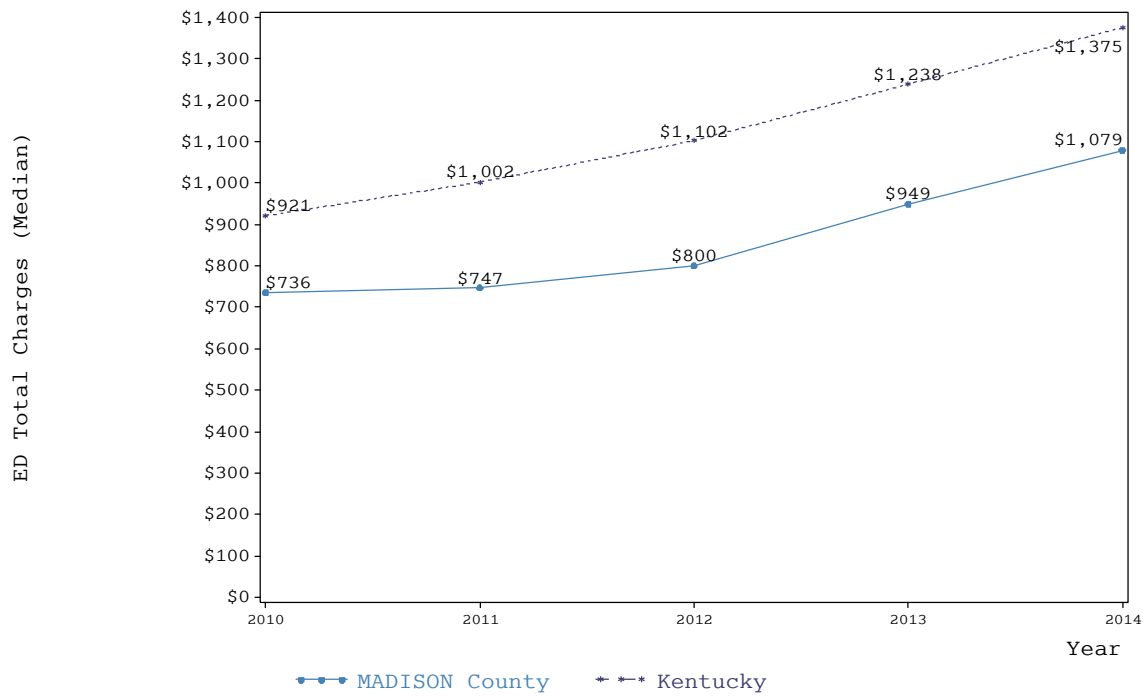
Cut/pierce – Includes injuries from incidents involving sharp objects such as powered lawn mowers and hand tools, powered household appliances and implements, knives/swords/daggers, other hand tools and implements, hypodermic needles, and more.

Machinery – Includes injuries from incidents involving agriculture machines, mining and earth-drilling machinery, lifting machines and appliances, metalworking machines, woodworking and forming machines, transmission machinery, earth moving/scraping/excavating machines, and more.

Trend Plot of Injury-related ED Visits
for Residents of MADISON County, All Injuries, 2010-2014



Trend Plot of Median Charges for ED Visits
for Residents of MADISON County, All Injuries, 2010-2014



Injury Visits to Emergency Departments, 2010 - 2014, by Year of Discharge
MADISON County Residents

Year	Injury Visits to Emergency Departments 2010 - 2014			
	MADISON county residents		Residents of all other KY counties (not including MADISON county)	
	Cases	Total charges	Cases	Total charges
2010	11,070	\$13,828,317	537,991	\$866,494,976
2011	11,751	\$14,169,834	532,728	\$958,133,621
2012	11,649	\$15,833,520	536,289	\$1,063,921,818
2013	10,613	\$16,906,947	492,508	\$1,116,648,580
2014	11,255	\$20,582,429	511,667	\$1,279,243,363

Injury Visits to Emergency Departments, 2010 - 2014, by Mechanism of Injury
MADISON County Residents

Mechanism of Injury	Injury Visits to Emergency Departments 2010 - 2014			
	MADISON county residents		Residents of all other KY counties (not including MADISON county)	
	Cases	Total charges	Cases	Total charges
MVTC	5,164	\$15,494,427	259,381	\$993,937,201
FIREARM	53	\$310,462	3,415	\$18,152,342
POISONING	1,197	\$2,391,081	57,371	\$141,707,759
FALLS	15,470	\$24,073,896	713,669	\$1,622,021,809
SUFFOCATION	33	\$114,322	1,776	\$5,768,634
DROWNING	12	\$18,114	529	\$1,286,152
FIRE/BURN	758	\$620,628	32,924	\$35,187,805
CUT/PIERCE	3,261	\$3,224,527	155,421	\$196,556,638
STRUCK BY/AGAINST	6,351	\$6,621,471	308,122	\$487,002,080
MACHINERY	169	\$298,999	8,831	\$20,891,726
OTHER PEDAL CYC	439	\$678,355	20,340	\$40,942,098
OTHER PEDESTRIAN	12	\$31,198	1,440	\$4,198,851
OTHER TRANS	627	\$1,490,990	35,704	\$124,811,952
NATURAL/ENVIR	2,523	\$2,061,146	113,197	\$121,398,127
OVEREXERTION	4,272	\$3,911,210	212,625	\$251,885,745
OTHER SPEC	1,645	\$2,099,581	102,669	\$150,472,126
NEC	4,292	\$4,900,627	53,336	\$103,660,800
NOT SPECIFIED	1,780	\$2,271,305	100,235	\$197,813,487
MISSING [†]	8,280	\$10,708,707	430,198	\$766,747,026

* At least 1 but fewer than 5.

† No external cause of injury code was specified on the billing record.

Injury Visits to Emergency Departments, 2010 - 2014, by Manner of Injury
MADISON County Residents

Manner of Injury	Injury Visits to Emergency Departments 2010 - 2014			
	MADISON county residents		Residents of all other KY counties (not including MADISON county)	
	Cases	Total charges	Cases	Total charges
UNINTENTIONAL	46,350	\$66,287,393	2,068,740	\$4,159,083,225
SELF-INFLICTED	432	\$1,327,408	19,136	\$62,058,625
ASSAULT	1,183	\$2,746,989	82,002	\$258,176,193
OTHER [†]	9	\$16,462	1,585	\$3,899,524
UNDETERMINED [§]	93	\$244,854	10,041	\$35,210,031
MISSING [†]	8,271	\$10,697,941	429,679	\$766,014,761

* At least 1 but fewer than 5.

† No manner of injury code was specified on the billing record.

‡ Includes injuries resulting from legal intervention or terrorism.

§ Insufficient information was available to determine the manner of injury.

UNINTENTIONAL Injury Visits to Emergency Departments, 2010 - 2014
MADISON County Residents

Mechanism of Injury	Injury Visits to Emergency Departments 2010 - 2014			
	MADISON county residents		Residents of all other KY counties (not including MADISON county)	
	Cases	Total charges	Cases	Total charges
MVTC	5,161	\$15,481,568	259,172	\$992,936,966
FIREARM	42	\$211,850	2,083	\$8,755,980
POISONING	809	\$1,276,314	38,138	\$70,985,423
FALLS	15,467	\$24,066,331	713,206	\$1,620,655,126
SUFFOCATION	23	\$84,948	1,009	\$2,553,687
DROWNING	12	\$18,114	514	\$1,201,361
FIRE/BURN	757	\$618,841	32,496	\$34,523,951
CUT/PIERCE	3,122	\$2,819,774	146,301	\$168,735,571
STRUCK BY/AGAINST	6,028	\$5,819,291	268,574	\$365,301,150
MACHINERY	169	\$298,999	8,831	\$20,891,726
OTHER PEDAL CYC	439	\$678,355	20,340	\$40,942,098
OTHER PEDESTRIAN	12	\$31,198	1,440	\$4,198,851
OTHER TRANS	627	\$1,490,990	35,704	\$124,811,952
NATURAL/ENVIR	2,522	\$2,060,686	113,105	\$121,063,657
OVEREXERTION	4,272	\$3,911,210	212,625	\$251,885,745
OTHER SPEC	1,517	\$1,757,146	95,147	\$132,966,815
NEC	4,222	\$4,616,507	34,105	\$45,934,456
NOT SPECIFIED	1,140	\$1,034,504	85,432	\$150,006,896
MISSING [†]	9	\$10,766	518	\$731,813

* At least 1 but fewer than 5.

† No manner of injury code was specified on the billing record.

SELF-INFLICTED Injury Visits to Emergency Departments, 2010 - 2014
MADISON County Residents

Mechanism of Injury	Injury Visits to Emergency Departments 2010 - 2014			
	MADISON county residents		Residents of all other KY counties (not including MADISON county)	
	Cases	Total charges	Cases	Total charges
MVTC	0	0	29	\$181,903
FIREARM	*	\$56,716	248	\$1,454,375
POISONING	301	\$890,247	10,925	\$40,171,758
FALLS	*	\$3,227	55	\$383,250
SUFFOCATION	8	\$25,513	433	\$1,880,498
DROWNING	0	0	8	\$59,603
FIRE/BURN	0	0	54	\$132,074
CUT/PIERCE	101	\$239,965	5,776	\$13,963,116
STRUCK BY/AGAINST	0	0	0	0
MACHINERY	0	0	0	0
OTHER PEDAL CYC	0	0	0	0
OTHER PEDESTRIAN	0	0	0	0
OTHER TRANS	0	0	0	0
NATURAL/ENVIR	0	0	7	\$32,363
OVEREXERTION	0	0	0	0
OTHER SPEC	5	\$97,067	117	\$638,084
NEC	7	\$6,564	1,136	\$2,261,209
NOT SPECIFIED	6	\$8,110	348	\$900,393
MISSING [†]	0	0	0	0

* At least 1 but fewer than 5.

† No manner of injury code was specified on the billing record.

ASSAULT Injury Visits to Emergency Departments, 2010 - 2014
MADISON County Residents

Mechanism of Injury	Injury Visits to Emergency Departments 2010 - 2014			
	MADISON county residents		Residents of all other KY counties (not including MADISON county)	
	Cases	Total charges	Cases	Total charges
MVTC	*	\$12,859	156	\$722,925
FIREARM	6	\$37,178	911	\$6,960,894
POISONING	*	\$5,371	77	\$179,227
FALLS	*	\$3,527	95	\$378,960
SUFFOCATION	*	\$3,861	311	\$1,277,217
DROWNING	0	0	*	\$7,913
FIRE/BURN	*	\$1,787	146	\$197,072
CUT/PIERCE	38	\$164,789	3,188	\$13,508,052
STRUCK BY/AGAINST	320	\$795,626	38,301	\$118,587,544
MACHINERY	0	0	0	0
OTHER PEDAL CYC	0	0	0	0
OTHER PEDESTRIAN	0	0	0	0
OTHER TRANS	0	0	0	0
NATURAL/ENVIR	0	0	0	0
OVEREXERTION	0	0	0	0
OTHER SPEC	118	\$236,886	7,327	\$16,742,392
NEC	63	\$277,556	17,595	\$54,287,601
NOT SPECIFIED	629	\$1,207,549	13,893	\$45,326,397
MISSING [†]	0	0	0	0

* At least 1 but fewer than 5.

† No manner of injury code was specified on the billing record.

OTHER[†] Injury Visits to Emergency Departments, 2010 - 2014

MADISON County Residents

Mechanism of Injury	Injury Visits to Emergency Departments 2010 - 2014			
	MADISON county residents		Residents of all other KY counties (not including MADISON county)	
	Cases	Total charges	Cases	Total charges
MVTC	0	0	0	0
FIREARM	0	0	51	\$128,086
POISONING	0	0	*	\$1,603
FALLS	0	0	0	0
SUFFOCATION	0	0	0	0
DROWNING	0	0	0	0
FIRE/BURN	0	0	0	0
CUT/PIERCE	0	0	22	\$25,477
STRUCK BY/AGAINST	*	\$6,554	1,247	\$3,113,386
MACHINERY	0	0	0	0
OTHER PEDAL CYC	0	0	0	0
OTHER PEDESTRIAN	0	0	0	0
OTHER TRANS	0	0	0	0
NATURAL/ENVIR	0	0	0	0
OVEREXERTION	0	0	0	0
OTHER SPEC	*	\$7,364	24	\$49,759
NEC	0	0	58	\$152,556
NOT SPECIFIED	*	\$2,544	181	\$428,657
MISSING [†]	0	0	0	0

* At least 1 but fewer than 5.

† No manner of injury code was specified on the billing record.

‡ Includes injuries resulting from legal intervention or terrorism.

UNDETERMINED[§] Injury Visits to Emergency Departments, 2010 - 2014

MADISON County Residents

Mechanism of Injury	Injury Visits to Emergency Departments 2010 - 2014			
	MADISON county residents		Residents of all other KY counties (not including MADISON county)	
	Cases	Total charges	Cases	Total charges
MVTC	0	0	24	\$95,407
FIREARM	*	\$4,718	122	\$853,007
POISONING	85	\$219,148	8,229	\$30,369,750
FALLS	*	\$811	313	\$604,473
SUFFOCATION	0	0	23	\$57,231
DROWNING	0	0	5	\$17,275
FIRE/BURN	0	0	228	\$334,708
CUT/PIERCE	0	0	134	\$324,422
STRUCK BY/AGAINST	0	0	0	0
MACHINERY	0	0	0	0
OTHER PEDAL CYC	0	0	0	0
OTHER PEDESTRIAN	0	0	0	0
OTHER TRANS	0	0	0	0
NATURAL/ENVIR	*	\$461	85	\$302,107
OVEREXERTION	0	0	0	0
OTHER SPEC	*	\$1,118	54	\$75,076
NEC	0	0	442	\$1,024,978
NOT SPECIFIED	*	\$18,599	381	\$1,151,145
MISSING [†]	0	0	*	\$452

* At least 1 but fewer than 5.

† No manner of injury code was specified on the billing record.

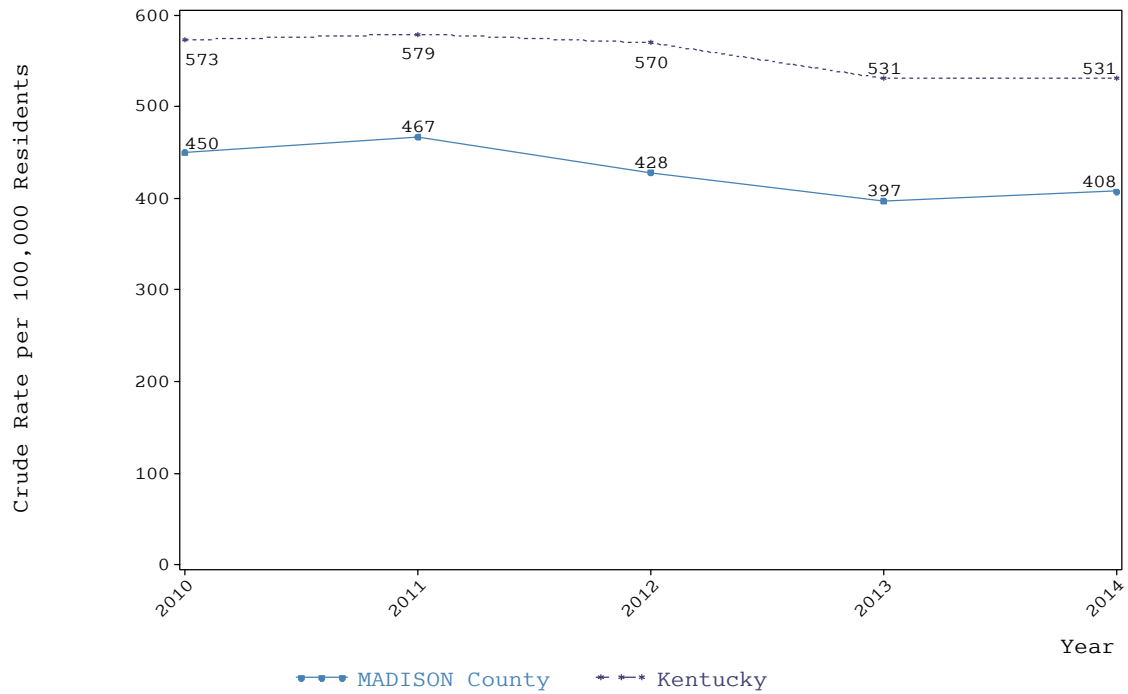
§ Insufficient information was available to determine the manner of injury.

Pediatric Injury Visits to Emergency Departments, 2010 - 2014, All Manner and Mechanisms of Injury
MADISON County Residents

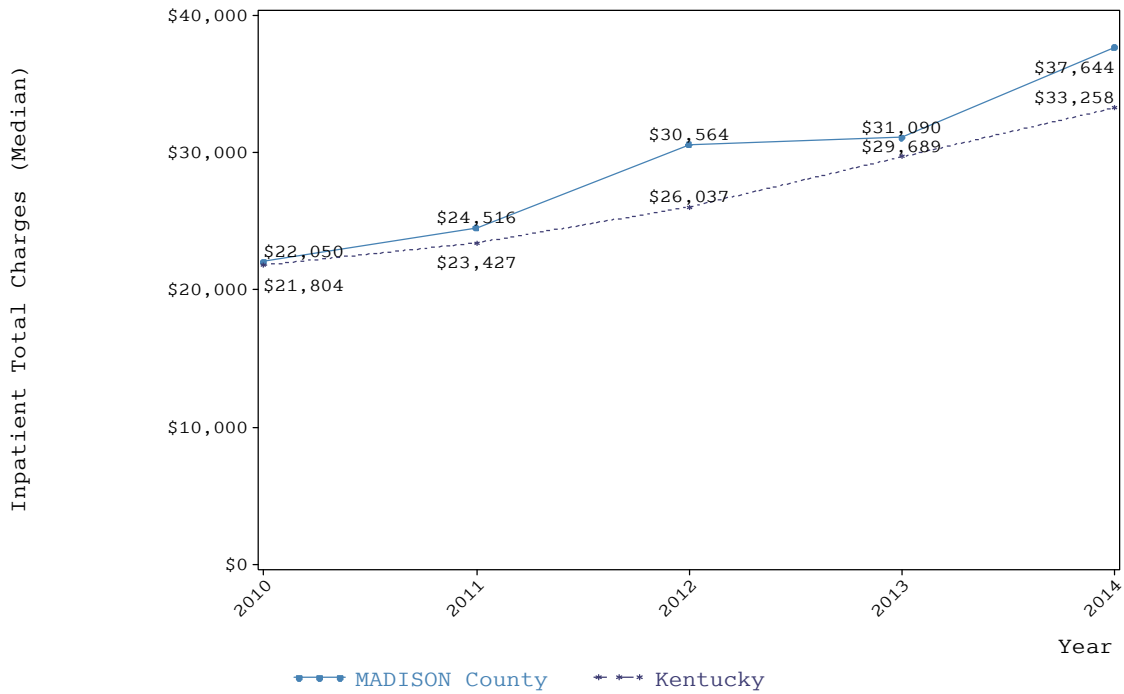
Age	Pediatric Injury Visits to Emergency Departments 2010 - 2014			
	MADISON county residents		Residents of all other KY counties (not including MADISON county)	
	Cases	Total charges	Cases	Total charges
<1	488	\$412,130	24,074	\$27,584,061
1-4	3,770	\$3,262,182	178,884	\$182,490,654
5-9	3,643	\$3,365,164	161,300	\$195,333,088
10-14	4,634	\$4,518,682	196,071	\$267,721,514
15-17	2,730	\$3,127,515	132,423	\$224,106,005

* At least 1 but fewer than 5.

Trend Plot of Injury-related Inpatient Discharges for Residents of MADISON County, All Injuries, 2010-2014



Trend Plot of Median Hospital Charges for Inpatients for Residents of MADISON County, All Injuries, 2010-2014



Injury Hospitalizations, 2010 - 2014, by Year of Discharge
MADISON County Residents

Year	Injury Hospitalizations 2010 - 2014					
	MADISON county residents			Residents of all other KY counties (not including MADISON county)		
	Cases	Hospital stay in days	Total charges	Cases	Hospital stay in days	Total charges
2010	374	1,898	\$12,584,759	24,540	113,846	\$835,942,794
2011	393	2,026	\$14,733,362	24,905	114,840	\$907,913,638
2012	363	2,178	\$18,165,075	24,589	112,482	\$1,014,644,270
2013	340	1,580	\$15,451,470	22,992	107,474	\$1,064,821,693
2014	356	1,955	\$20,670,064	23,079	111,474	\$1,179,171,645

Injury Hospitalizations, 2010 - 2014, by Mechanism of Injury
MADISON County Residents

Mechanism of Injury	Injury Hospitalizations 2010 - 2014					
	MADISON county residents			Residents of all other KY counties (not including MADISON county)		
	Cases	Hospital stay in days	Total charges	Cases	Hospital stay in days	Total charges
MVTC	263	1,779	\$21,715,001	11,661	71,196	\$983,253,623
FIREARM	25	148	\$2,070,844	1,310	8,573	\$115,346,694
POISONING	301	968	\$5,960,264	22,212	68,846	\$449,293,760
FALLS	626	3,548	\$25,464,853	54,166	268,123	\$2,113,763,601
SUFFOCATION	*	6	\$36,013	247	1,114	\$11,008,276
DROWNING	*	*	\$8,214	60	177	\$1,970,058
FIRE/BURN	14	92	\$780,766	1,218	8,253	\$71,754,065
CUT/PIERCE	22	78	\$954,670	1,543	5,495	\$56,928,181
STRUCK BY/AGAINST	31	114	\$1,189,550	2,579	9,781	\$101,076,818
MACHINERY	15	83	\$1,007,431	583	2,658	\$32,024,760
OTHER PEDAL CYC	13	58	\$536,709	485	1,566	\$17,167,057
OTHER PEDESTRIAN	*	13	\$120,762	82	514	\$6,462,595
OTHER TRANS	42	260	\$2,692,238	2,425	10,540	\$119,527,576
NATURAL/ENVIR	9	28	\$125,502	1,526	5,562	\$39,668,803
OVEREXERTION	6	40	\$558,182	836	3,077	\$25,428,709
OTHER SPEC	26	79	\$737,757	1,564	7,764	\$68,333,181
NEC	10	27	\$186,803	668	2,745	\$22,547,896
NOT SPECIFIED	21	189	\$1,247,233	1,577	6,689	\$59,119,189
MISSING [†]	394	2,125	\$16,211,937	15,363	77,443	\$707,819,199

* At least 1 but fewer than 5.

† No external cause of injury code was specified on the billing record.

Injury Hospitalizations, 2010 - 2014, by Manner of Injury
MADISON County Residents

Manner of Injury	Injury Hospitalizations 2010 - 2014					
	MADISON county residents			Residents of all other KY counties (not including MADISON county)		
	Cases	Hospital stay in days	Total charges	Cases	Hospital stay in days	Total charges
UNINTENTIONAL	1,193	6,629	\$58,638,793	86,863	419,249	\$3,789,655,364
SELF-INFLICTED	156	426	\$2,722,740	10,713	34,706	\$223,210,386
ASSAULT	43	291	\$2,792,310	2,931	14,248	\$167,619,496
OTHER [†]	*	7	\$113,712	47	268	\$3,662,569
UNDETERMINED [§]	39	159	\$1,125,237	4,197	14,222	\$110,727,156
MISSING [†]	394	2,125	\$16,211,937	15,354	77,423	\$707,619,069

* At least 1 but fewer than 5.

† No manner of injury code was specified on the billing record.

‡ Includes injuries resulting from legal intervention or terrorism.

§ Insufficient information was available to determine the manner of injury.

UNINTENTIONAL Injury Hospitalizations, 2010 - 2014
MADISON County Residents

Mechanism of Injury	Injury Hospitalizations 2010 - 2014					
	MADISON county residents			Residents of all other KY counties (not including MADISON county)		
	Cases	Hospital stay in days	Total charges	Cases	Hospital stay in days	Total charges
MVTC	263	1,779	\$21,715,001	11,634	71,063	\$981,570,648
FIREARM	9	39	\$559,843	379	1,705	\$22,298,206
POISONING	121	451	\$2,990,146	8,234	25,886	\$176,215,879
FALLS	626	3,548	\$25,464,853	54,111	267,379	\$2,106,974,077
SUFFOCATION	*	6	\$36,013	172	830	\$6,722,616
DROWNING	*	*	\$8,214	55	150	\$1,681,165
FIRE/BURN	14	92	\$780,766	1,168	7,589	\$63,608,670
CUT/PIERCE	7	13	\$157,347	659	1,880	\$18,885,030
STRUCK BY/AGAINST	22	91	\$883,528	1,639	6,383	\$63,392,116
MACHINERY	15	83	\$1,007,431	583	2,658	\$32,024,760
OTHER PEDAL CYC	13	58	\$536,709	485	1,566	\$17,167,057
OTHER PEDESTRIAN	*	13	\$120,762	82	514	\$6,462,595
OTHER TRANS	42	260	\$2,692,238	2,425	10,540	\$119,527,576
NATURAL/ENVIR	9	28	\$125,502	1,517	5,532	\$39,440,763
OVEREXERTION	6	40	\$558,182	836	3,077	\$25,428,709
OTHER SPEC	22	68	\$490,138	1,299	6,142	\$54,911,262
NEC	5	15	\$98,537	422	1,643	\$12,933,198
NOT SPECIFIED	11	43	\$413,583	1,154	4,692	\$40,210,906
MISSING [†]	0	0	0	9	20	\$200,130

* At least 1 but fewer than 5.

† No manner of injury code was specified on the billing record.

SELF-INFLICTED Injury Hospitalizations, 2010 - 2014
MADISON County Residents

Mechanism of Injury	Injury Hospitalizations 2010 - 2014					
	MADISON county residents			Residents of all other KY counties (not including MADISON county)		
	Cases	Hospital stay in days	Total charges	Cases	Hospital stay in days	Total charges
MVTC	0	0	0	10	55	\$488,951
FIREARM	5	29	\$407,619	225	1,734	\$20,871,198
POISONING	142	363	\$1,899,943	9,905	29,492	\$169,337,296
FALLS	0	0	0	36	519	\$4,639,687
SUFFOCATION	0	0	0	68	264	\$3,903,529
DROWNING	0	0	0	*	23	\$256,205
FIRE/BURN	0	0	0	14	439	\$6,604,450
CUT/PIERCE	8	33	\$410,389	345	1,409	\$10,608,103
STRUCK BY/AGAINST	0	0	0	0	0	0
MACHINERY	0	0	0	0	0	0
OTHER PEDAL CYC	0	0	0	0	0	0
OTHER PEDESTRIAN	0	0	0	0	0	0
OTHER TRANS	0	0	0	0	0	0
NATURAL/ENVIR	0	0	0	0	0	0
OVEREXERTION	0	0	0	0	0	0
OTHER SPEC	0	0	0	51	456	\$5,129,467
NEC	*	*	\$4,789	48	293	\$1,236,773
NOT SPECIFIED	0	0	0	7	22	\$134,727
MISSING [†]	0	0	0	0	0	0

* At least 1 but fewer than 5.

† No manner of injury code was specified on the billing record.

ASSAULT Injury Hospitalizations, 2010 - 2014
MADISON County Residents

Mechanism of Injury	Injury Hospitalizations 2010 - 2014					
	MADISON county residents			Residents of all other KY counties (not including MADISON county)		
	Cases	Hospital stay in days	Total charges	Cases	Hospital stay in days	Total charges
MVTC	0	0	0	15	63	\$1,074,200
FIREARM	10	75	\$1,048,320	659	4,829	\$67,799,689
POISONING	0	0	0	16	62	\$511,613
FALLS	0	0	0	6	92	\$827,984
SUFFOCATION	0	0	0	*	5	\$101,094
DROWNING	0	0	0	0	0	0
FIRE/BURN	0	0	0	16	92	\$751,202
CUT/PIERCE	7	32	\$386,933	530	2,184	\$27,207,069
STRUCK BY/AGAINST	8	16	\$192,310	920	3,334	\$36,913,174
MACHINERY	0	0	0	0	0	0
OTHER PEDAL CYC	0	0	0	0	0	0
OTHER PEDESTRIAN	0	0	0	0	0	0
OTHER TRANS	0	0	0	0	0	0
NATURAL/ENVIR	0	0	0	0	0	0
OVEREXERTION	0	0	0	0	0	0
OTHER SPEC	*	11	\$247,619	211	1,146	\$8,225,148
NEC	*	11	\$83,477	183	670	\$7,196,995
NOT SPECIFIED	10	146	\$833,650	372	1,771	\$17,011,329
MISSING [†]	0	0	0	0	0	0

* At least 1 but fewer than 5.

† No manner of injury code was specified on the billing record.

OTHER[‡] Injury Hospitalizations, 2010 - 2014

MADISON County Residents

Mechanism of Injury	Injury Hospitalizations 2010 - 2014					
	MADISON county residents			Residents of all other KY counties (not including MADISON county)		
	Cases	Hospital stay in days	Total charges	Cases	Hospital stay in days	Total charges
MVTC	0	0	0	0	0	0
FIREARM	0	0	0	22	177	\$2,780,520
POISONING	0	0	0	0	0	0
FALLS	0	0	0	0	0	0
SUFFOCATION	0	0	0	0	0	0
DROWNING	0	0	0	0	0	0
FIRE/BURN	0	0	0	0	0	0
CUT/PIERCE	0	0	0	0	0	0
STRUCK BY/AGAINST	*	7	\$113,712	20	64	\$771,528
MACHINERY	0	0	0	0	0	0
OTHER PEDAL CYC	0	0	0	0	0	0
OTHER PEDESTRIAN	0	0	0	0	0	0
OTHER TRANS	0	0	0	0	0	0
NATURAL/ENVIR	0	0	0	0	0	0
OVEREXERTION	0	0	0	0	0	0
OTHER SPEC	0	0	0	*	20	\$67,303
NEC	0	0	0	*	*	\$15,134
NOT SPECIFIED	0	0	0	*	*	\$28,084
MISSING [†]	0	0	0	0	0	0

* At least 1 but fewer than 5.

† No manner of injury code was specified on the billing record.

‡ Includes injuries resulting from legal intervention or terrorism.

UNDETERMINED[§] Injury Hospitalizations, 2010 - 2014
MADISON County Residents

Mechanism of Injury	Injury Hospitalizations 2010 - 2014					
	MADISON county residents			Residents of all other KY counties (not including MADISON county)		
	Cases	Hospital stay in days	Total charges	Cases	Hospital stay in days	Total charges
MVTC	0	0	0	*	15	\$119,824
FIREARM	*	5	\$55,062	25	128	\$1,597,081
POISONING	38	154	\$1,070,175	4,057	13,406	\$103,228,973
FALLS	0	0	0	13	133	\$1,321,853
SUFFOCATION	0	0	0	*	15	\$281,037
DROWNING	0	0	0	*	*	\$32,688
FIRE/BURN	0	0	0	20	133	\$789,742
CUT/PIERCE	0	0	0	9	22	\$227,979
STRUCK BY/AGAINST	0	0	0	0	0	0
MACHINERY	0	0	0	0	0	0
OTHER PEDAL CYC	0	0	0	0	0	0
OTHER PEDESTRIAN	0	0	0	0	0	0
OTHER TRANS	0	0	0	0	0	0
NATURAL/ENVIR	0	0	0	9	30	\$228,041
OVEREXERTION	0	0	0	0	0	0
OTHER SPEC	0	0	0	0	0	0
NEC	0	0	0	14	136	\$1,165,795
NOT SPECIFIED	0	0	0	43	200	\$1,734,144
MISSING [†]	0	0	0	0	0	0

* At least 1 but fewer than 5.

† No manner of injury code was specified on the billing record.

§ Insufficient information was available to determine the manner of injury.

Pediatric Injury Hospitalizations, 2010 - 2014, All Manner and Mechanisms of Injury
MADISON County Residents

Age	Pediatric Injury Hospitalizations 2010 - 2014			
	MADISON county residents		Residents of all other KY counties (not including MADISON county)	
	Cases	Total charges	Cases	Total charges
<1	17	\$608,109	582	\$15,614,493
1-4	23	\$372,616	1,373	\$32,675,068
5-9	19	\$544,519	1,098	\$33,189,046
10-14	24	\$848,638	1,596	\$50,716,765
15-17	29	\$1,042,158	2,048	\$88,317,150

* At least 1 but fewer than 5.